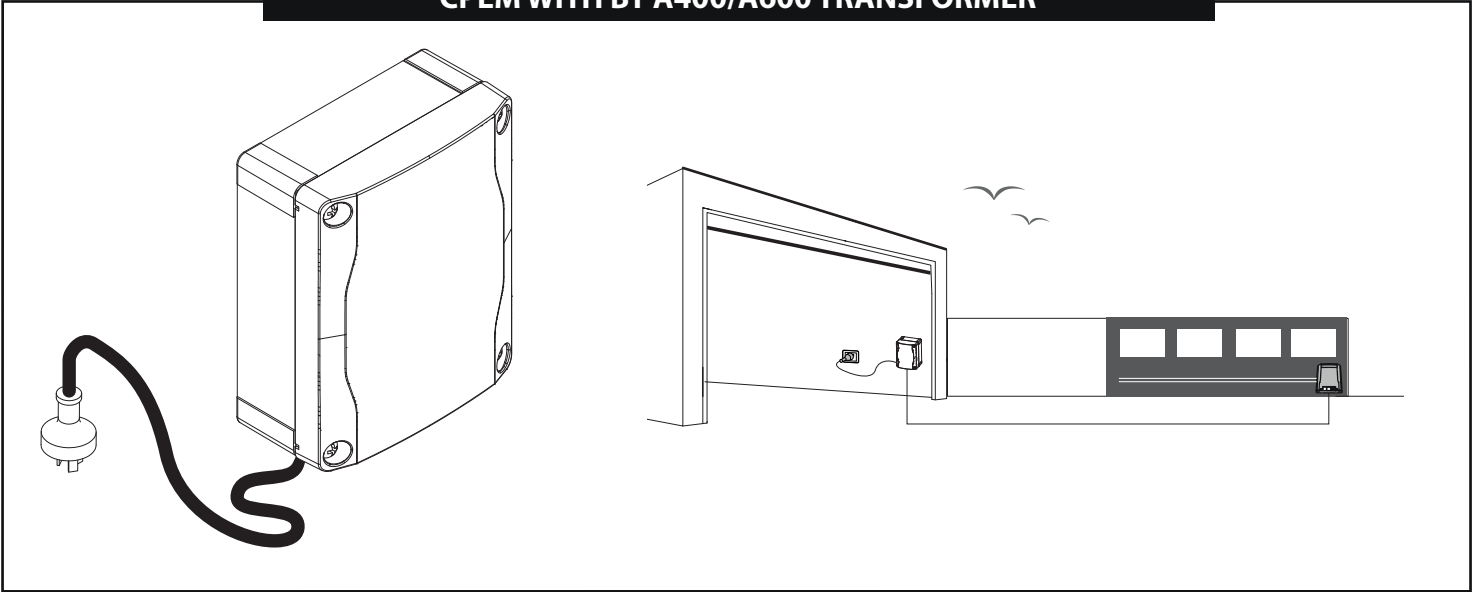




CPEM WITH BT A400/A600 TRANSFORMER



PREPARE THE ELECTRICAL CONNECTION SYSTEM BETWEEN THE TRANSFORMER PANEL AND THE DEIMOS BT A400/600, ACCORDING TO THE CABLE DATA INDICATED IN THE ATTACHED TABLE

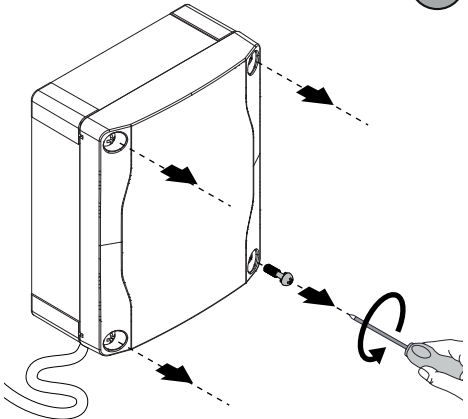
A

Cable section (mm ²)	1 mm ²	1.5 mm ²	2.5 mm ²	4 mm ²
Deimos 400 [0.116 Ohm]	5.5 m	8.3 m	13.8 m	22.1 m
Deimos 600 [0.0695 Ohm]	3.3 m	5 m	8.3 m	13.2 m

Cable section (AWG)	AWG 17	AWG 15	AWG 13	AWG 11
Deimos 400 [0.116 Ohm]	5.5 m	8.3 m	13.8 m	22.1 m
Deimos 600 [0.0695 Ohm]	3.3 m	5 m	8.3 m	13.2 m

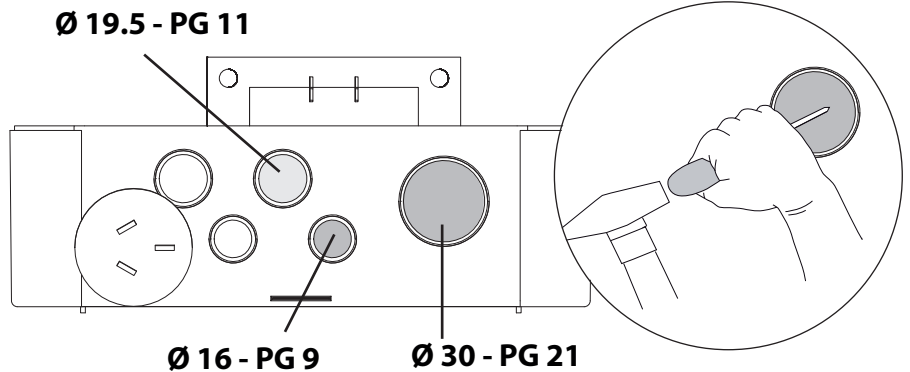
OPEN THE COVER BY UNSCREWING THE SCREWS

B



DEPENDING ON THE SECTION OF THE CABLE CHOSEN, BREAK THE CABLE PASSAGE ZONE

C

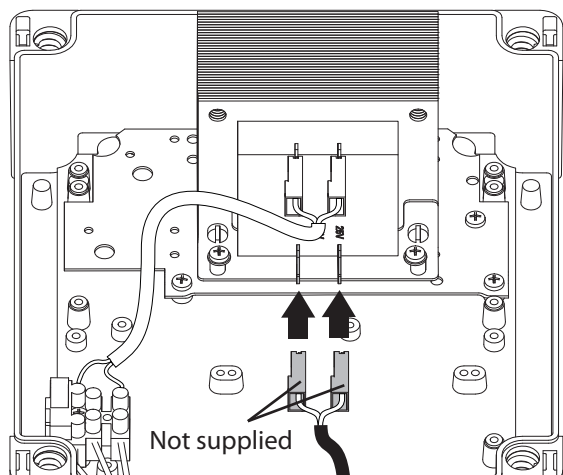


ASSEMBLE THE PANEL WITH TRANSFORMER AS PER THE MANUAL CONTAINED IN THE PACK

D

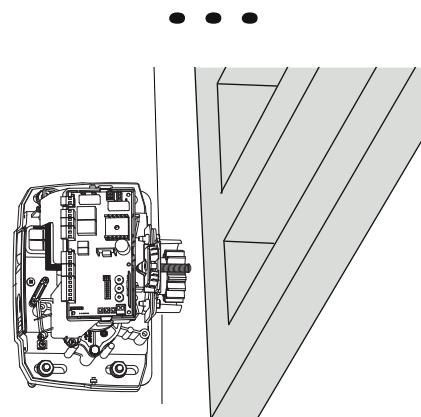
INSERT THE 6.3X0.8 FEMALE FASTON IN THE SECONDARY OF THE TRANSFORMER

E



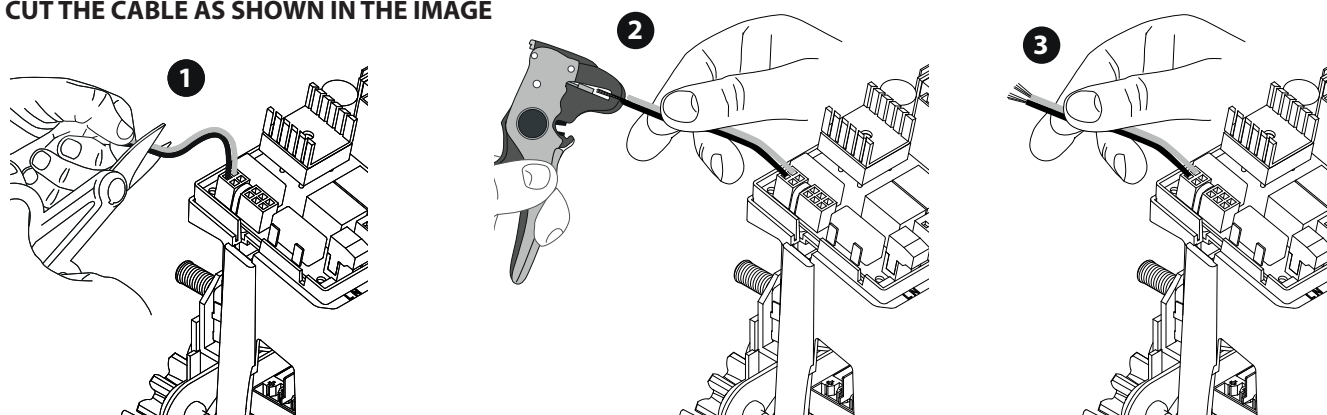
PROCEED TO ASSEMBLE THE DEIMOS BT A400/600 MOTOR ONLY AS PER THE PRODUCT MANUAL.

F



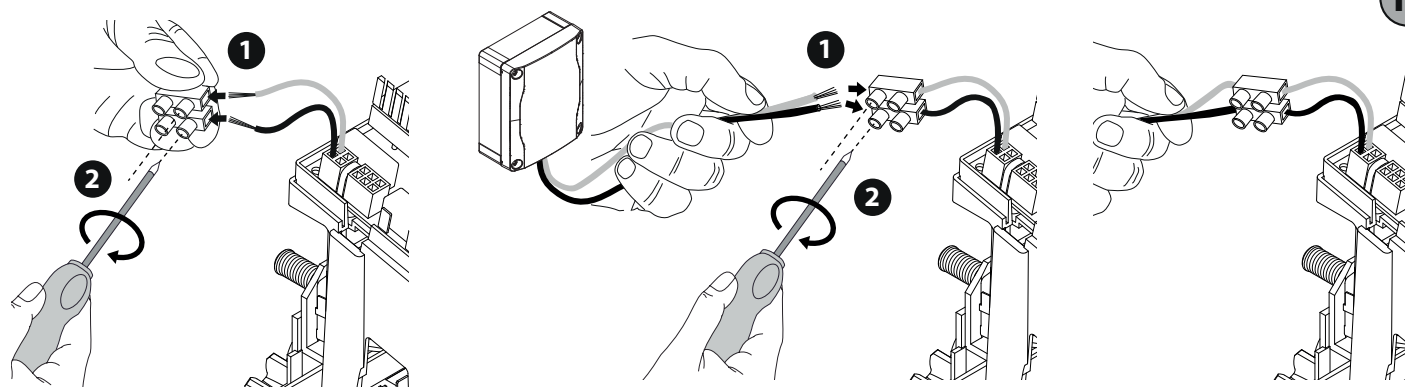
CUT THE CABLE AS SHOWN IN THE IMAGE

G



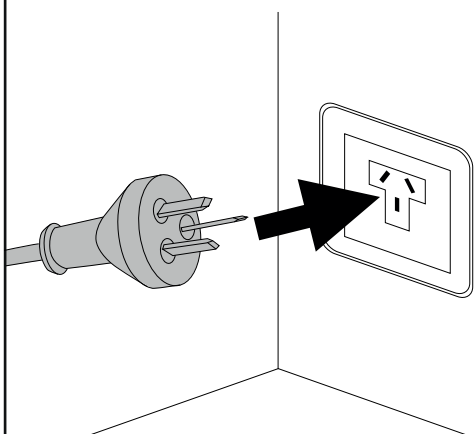
MAKE THE CONNECTION BETWEEN THE CUT CABLE AND THE CABLE OF THE PANEL WITH TRANSFORMER

H



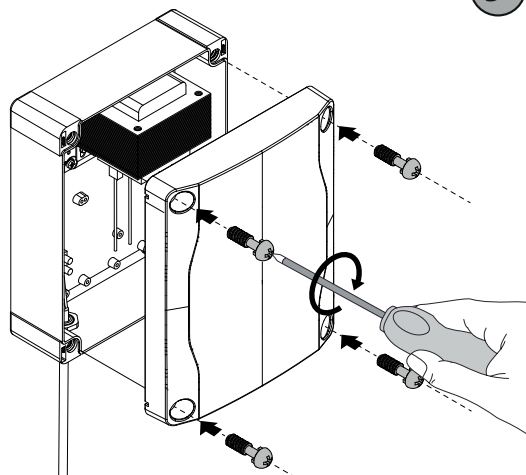
INSERT THE PLUG INTO THE SOCKET

I



FASTEN THE COVER WITH THE SCREWS

J



K

END THE INSTALLATION OF THE DEIMOS BT A400/600 AS PER THE PRODUCT MANUAL