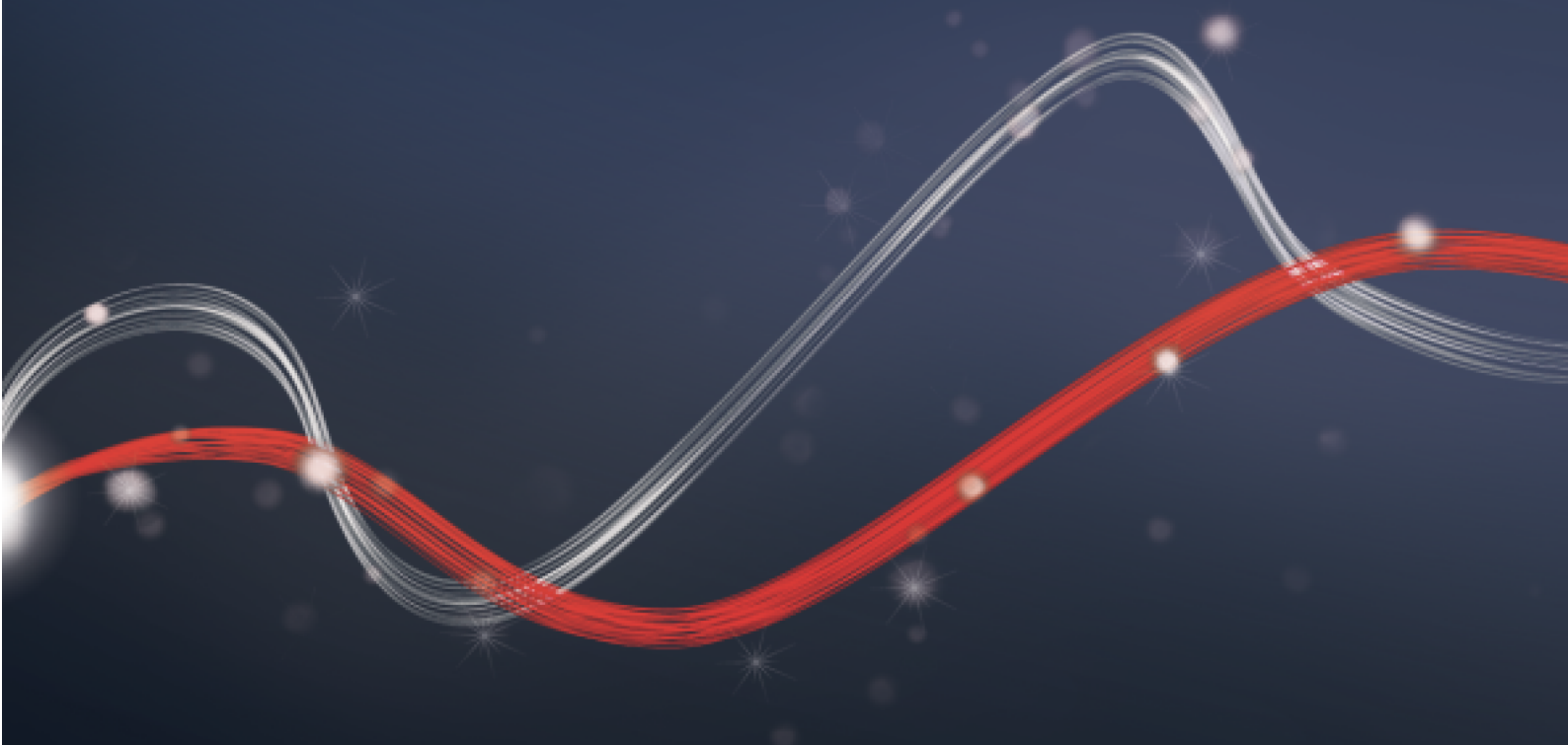




Be ahead

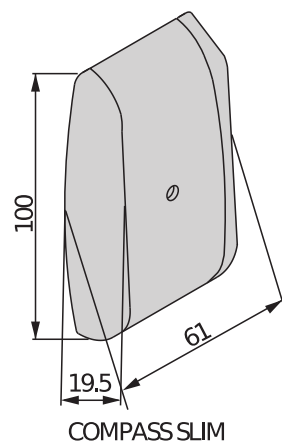
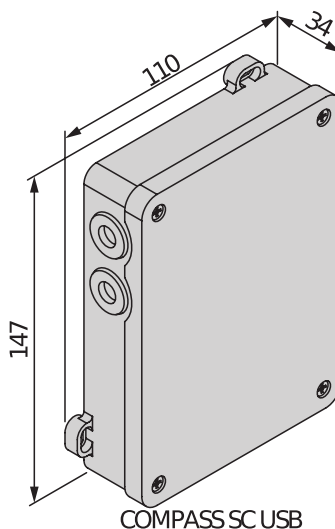


COMPASS





Access control systems and hands-free devices



Access control system capable of managing up to 32 entry/exit peripherals in a maximum of 8 distinct zones with anti-passback control. The system is entirely standalone and can be connected via USB to a personal computer for management and/or programming.

Relevant features



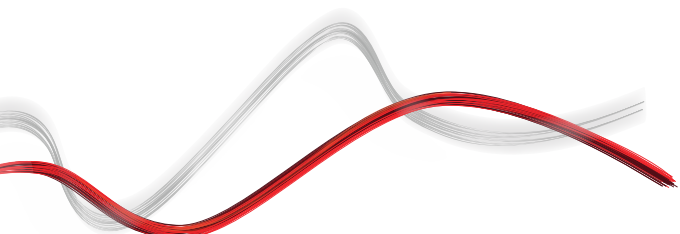
The COMPASS SLIM is fully resin coated to guarantee maximum safety and reliability.



The SECURBASE LIGHT or PLUS software adapts to the needs of all types of systems, from the smallest and simplest to the most complex.



With the RTD CA 2048 receiver, access control can be combined with the control of PASSY hands-free systems.





Access control systems and hands-free devices

COMPASS

Code	Name	Description
D113691	COMPASS SC USB	Access control unit allowing connection with a maximum of 2 COMPASS SLIM. Number of cards managed: up to 6000 in stand alone. Number of events memorised: up to 65535 in stand alone.
D113256	COMPASS 485	Interface control unit for connection with a maximum of 2 COMPASS SLIM. Number of cards managed: up to 6000 in stand alone.
D113704	COMPASS SLIM	Reader head with IP55 protection rating.

	COMPASS SC USB	COMPASS 485	COMPASS SLIM
Power supply	230 V	230 V	12 V
Max output relay current	5 A	5 A	no A
Max connectable peripherals	2 COMPASS SLIM	2 COMPASS SLIM	no
Manageable badges	up to 6000 in stand alone	up to 6000 in stand alone	no
Memorisable events	up to 65535 in stand alone	no	no
Protection rating	IP20	IP20	IP55
Environmental conditions	-20 ÷ 60 °C	-20 ÷ 60 °C	-20 ÷ 60 °C

RECOMMENDED ACCESSORIES

	D113671 00002 - RTD CA 2048 Four-channel rolling code receiver with 2048 codes and built-in programming display. Usable with COMPASS		P111388 - SECURBASE LIGHT USB Management software for COMPASS access control system based on COMPASS SC.
	P111389 - SECURBASE PLUS USB Advanced management software for COMPASS access control system based on COMPASS SC.		D110912 - COMPASS - CUSTOM ISO CARD ISO standard proximity badge
	D110914 - COMPASS - RING Key-ring transponder for access control		P121025 - Q.BO PAD Vandalproof digital push-button panel, for outdoor use. Metal structure and s/steel buttons. Compatible with WIEGAND protocol, it ensures maximum system safety as it does not directly control the opening of the entry point.



Access control systems and hands-free devices

What is U-Link?

The technology that gives you more power

U-Link, Universal Link, is an exclusive BFT platform that can be used to create high-tech ecosystems.

In Home Access Automation, it can be used to communicate with all home access automation devices of any brand. This saves you time and allows you to control everything easily and without any worries.

It is intuitive

Easy to install and to use

It is scalable

You can add as many devices as you want

It is flexible

It allows you to create groups of interconnected products

It is practical

Works with or without an internet connection

It is functional

Its settings can be controlled remotely using dedicated applications



Access control systems and hands-free devices

Everything on one screen: find out more about this amazing technology

A world-exclusive platform that **can be used to create high-tech ecosystems** offering a vast range of solutions for many different sectors.

This proprietary platform which is a key feature of BFT products, thanks to the B-EBA cards and the Clonix U-Link receiver, is suitable for any protocol or product for access automation (including BFT products non-BFT ones and older versions) and it can be used in a variety of different sectors. This means any device becomes a smart device which can be interconnected with other systems, using a language that is becoming universal.



U-Control HOME

U-Control HOME is the application that allows you to open the gate to your home and to remotely control BFT automations using your own smartphone. The iOS version can be used to automatically open the automation when you are close to it.



U-Base 2

A software package for installation, performing maintenance and identifying any faults in the U-Link compatible operators, easily and conveniently.



U-SDK

U-SDK is the application which allows BFT automations to be made compatible and easily integrated with a BMS network.



Clonix U-Link

Connect non-native U-Link and non-BFT products to U-Link systems.

Is it possible to connect non-native U-Link BFT operators or other brands of products to U-Link? Yes, thanks to the Clonix receivers. Accessories which accept no limits.



B-EBA

A direct link to your operators.

The B-EBA expansion cards make it possible to connect external devices such as PCs, smartphones and tablets to a BFT operator and a Clonix receiver or to connect multiple BFT products in a U-Link network. These accessories integrate with U-Link technology and with Bluetooth, Wifi, Z-Wave and TCP/IP protocols as well as with the RS485 serial interface. A device that demonstrates exactly what BFT means by interconnectivity.

