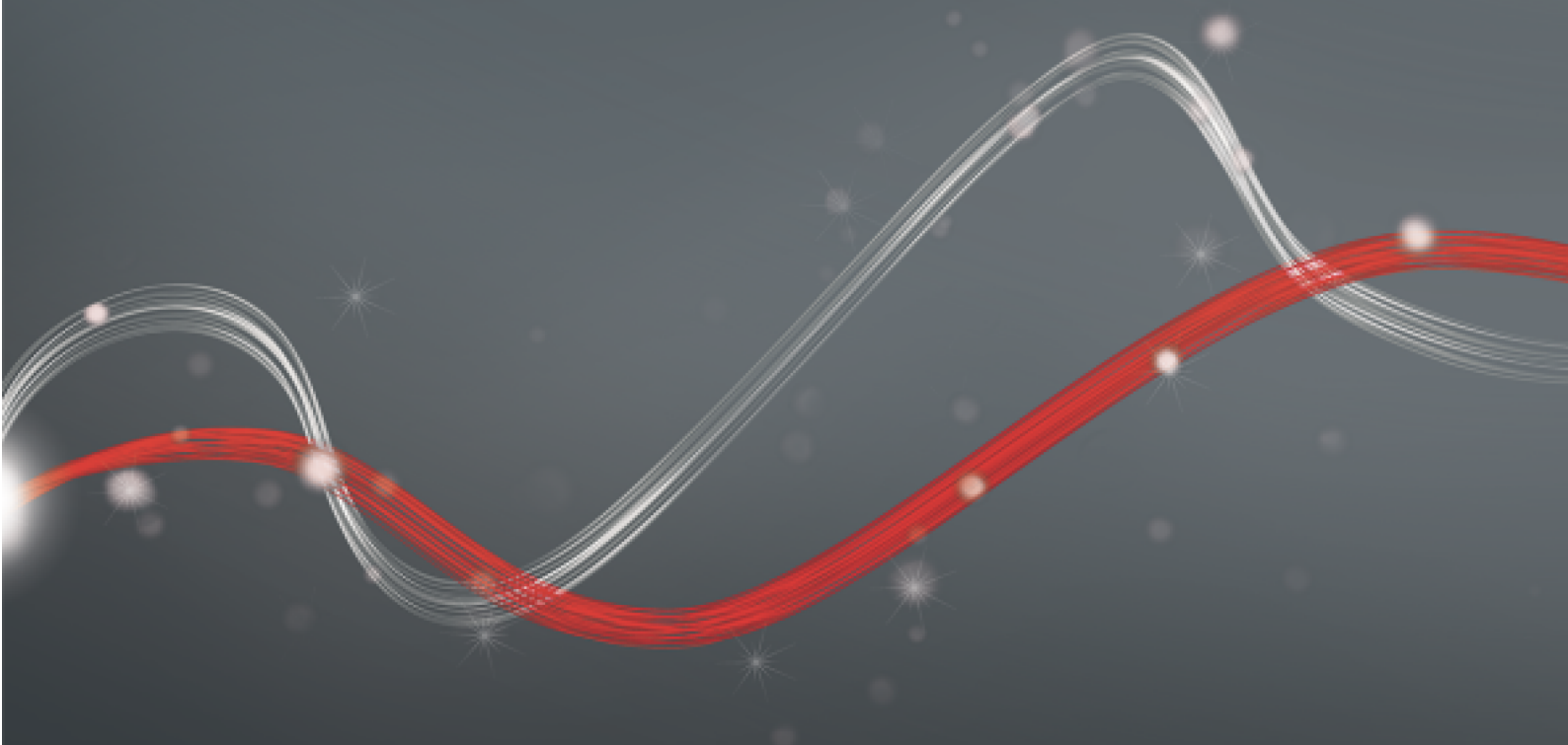




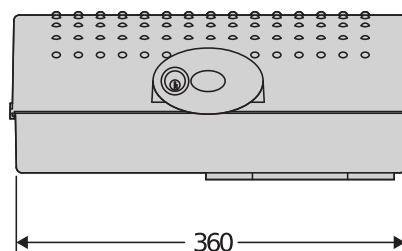
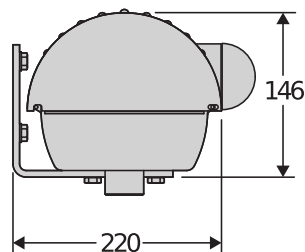
Be ahead



IGEA LB



Automation systems for industrial sectional doors and folding doors



Range of 230V electromechanical operators for industrial folding doors, up to 2 panels per gate.
Available also in 24V version to guarantee maximum anti-crushing safety and precision in movement and slowdown.

Relevant features



Control unit with programming display, automatic setting menu, simplified programming and virtual encoder in 24V version.



Built-in, adjustable, single-cable electromechanical limit switch system.



Removable steel cable release system.



Automation systems for industrial sectional doors and folding doors

IGEA LB

Code	Name	Description
P935072 00002	IGEA LB BT	Electromechanical operator for industrial folding doors (max. two panels) with panel length 2 m. door weight 250 kg and use Semi intensive. D-Track

THALIA P: Control panel for one or two 24V electromechanical and hydraulic operators for swing gates with electric lock management, for highly complex systems



D113747 00002 - THALIA P - Recommended



- Card power supply: 230 V single-phase
- Operators power supply: 24Vdc 240W max each operator
- Main features: removable terminal blocks with new standard colour-coding, simplified scenario-based programming with display and incorporated dual channel receiver, D-Track anti-crushing system, slowdown during opening and closing and electronic self-learning
- Main features: automatic closing, rapid closing, partial opening, operation with deadman feature, direct connection powered solenoid lock and electromagnet, direct connection edge BK2.
- Application: display panel for 1 or 2 24V operators
- Compatibility: LIBRA C MA, LIBRA, LIBRA R, LIBRA MA R

RIGEL 6 220-230V 50/60HZ: Universal control panel with display for one or two 230V - 650+650W operators



D113833 00002 - RIGEL 6 220-230V 50/60HZ - Recommended









- Universal control panel with display for one or two 230V - 650+650W operators
- Application: universal control panel for one or two operators
- Card power supply: 230 V single-phase
- Operators power supply: 230V single-phase 600+600W
- Main features: removable terminal blocks, programming and diagnostics with display, built-in four-channel receiver, electro lock, electronic torque limiter, electronic deceleration at opening and closing, a separate limit switch inputs for each motor, traffic light management, preheating hydraulic operators, weekly timer, possibility to delete a specific remote control, customization of the 4 radio channels, personalization of the duration of the delayed output, adjustable sensitivity to the obstacle.
- Main functions: automatic re-closing, separate motor working times, stays locked when closed, water hammer, 2/3/4 step logic, partial opening, fast closing, separate opening and closing
- Compatibility: RIGEL 5 - RIGEL 4 - RIGEL 3 - RIGEL N

	IGEA LB BT
Control unit	THALIA P
Nominal voltage	24 V
Power consumption	40 W
Max. door/gate weight	250 kg
Panel length	2 m
Type of limit switch	Electromechanical
Slowdown	Yes
Locking	Mechanical
Release	External accessory with personal key
Impact reaction	D-Track
Frequency of use	Semi intensive
Protection rating	IP4X
Environmental conditions	-15 ÷ 60 °C



Automation systems for industrial sectional doors and folding doors

RECOMMENDED ACCESSORIES

	D113811 00004 - ALENA SW2 Control panel with slow-down, dip switches and potentiometers for one or two 230V 400W+400W, operators for swing gates and industrial folding doors		P111782 - COMPACTA A20-180 Pair of photocells adjustable 180° horizontally. 20 metre range. 12-33 VAC/15-35 VDC power supply.
	D113703 00002 - ALTAIR P Control panel with display for one or two 230V/300W operators for swing gates and industrial folding doors		 D113745 00002 - THALIA Control panel with display for one or two 24V electromechanical operators for swing gates
	N733020 - SEB External key release for BERMA, FORB, IGEA LB and IGEA LB BT		



Automation systems for industrial sectional doors and folding doors

What is U-Link?

The technology that gives you more power

U-Link, Universal Link, is an exclusive BFT platform that can be used to create high-tech ecosystems.

In Home Access Automation, it can be used to communicate with all home access automation devices of any brand. This saves you time and allows you to control everything easily and without any worries.

It is intuitive

Easy to install and to use

It is scalable

You can add as many devices as you want

It is flexible

It allows you to create groups of interconnected products

It is practical

Works with or without an internet connection

It is functional

Its settings can be controlled remotely using dedicated applications

Automation systems for industrial sectional doors and folding doors

Everything on one screen: find out more about this amazing technology

A world-exclusive platform that **can be used to create high-tech ecosystems** offering a vast range of solutions for many different sectors.

This proprietary platform which is a key feature of BFT products, thanks to the B-EBA cards and the Clonix U-Link receiver, is suitable for any protocol or product for access automation (including BFT products non-BFT ones and older versions) and it can be used in a variety of different sectors. This means any device becomes a smart device which can be interconnected with other systems, using a language that is becoming universal.



U-Control HOME

U-Control HOME is the application that allows you to open the gate to your home and to remotely control BFT automations using your own smartphone. The iOS version can be used to automatically open the automation when you are close to it.



U-Base 2

A software package for installation, performing maintenance and identifying any faults in the U-Link compatible operators, easily and conveniently.



U-SDK

U-SDK is the application which allows BFT automations to be made compatible and easily integrated with a BMS network.



Clonix U-Link

Connect non-native U-Link and non-BFT products to U-Link systems.

Is it possible to connect non-native U-Link BFT operators or other brands of products to U-Link? Yes, thanks to the Clonix receivers. Accessories which accept no limits.



B-EBA

A direct link to your operators.

The B-EBA expansion cards make it possible to connect external devices such as PCs, smartphones and tablets to a BFT operator and a Clonix receiver or to connect multiple BFT products in a U-Link network. These accessories integrate with U-Link technology and with Bluetooth, Wifi, Z-Wave and TCP/IP protocols as well as with the RS485 serial interface. A device that demonstrates exactly what BFT means by interconnectivity.

