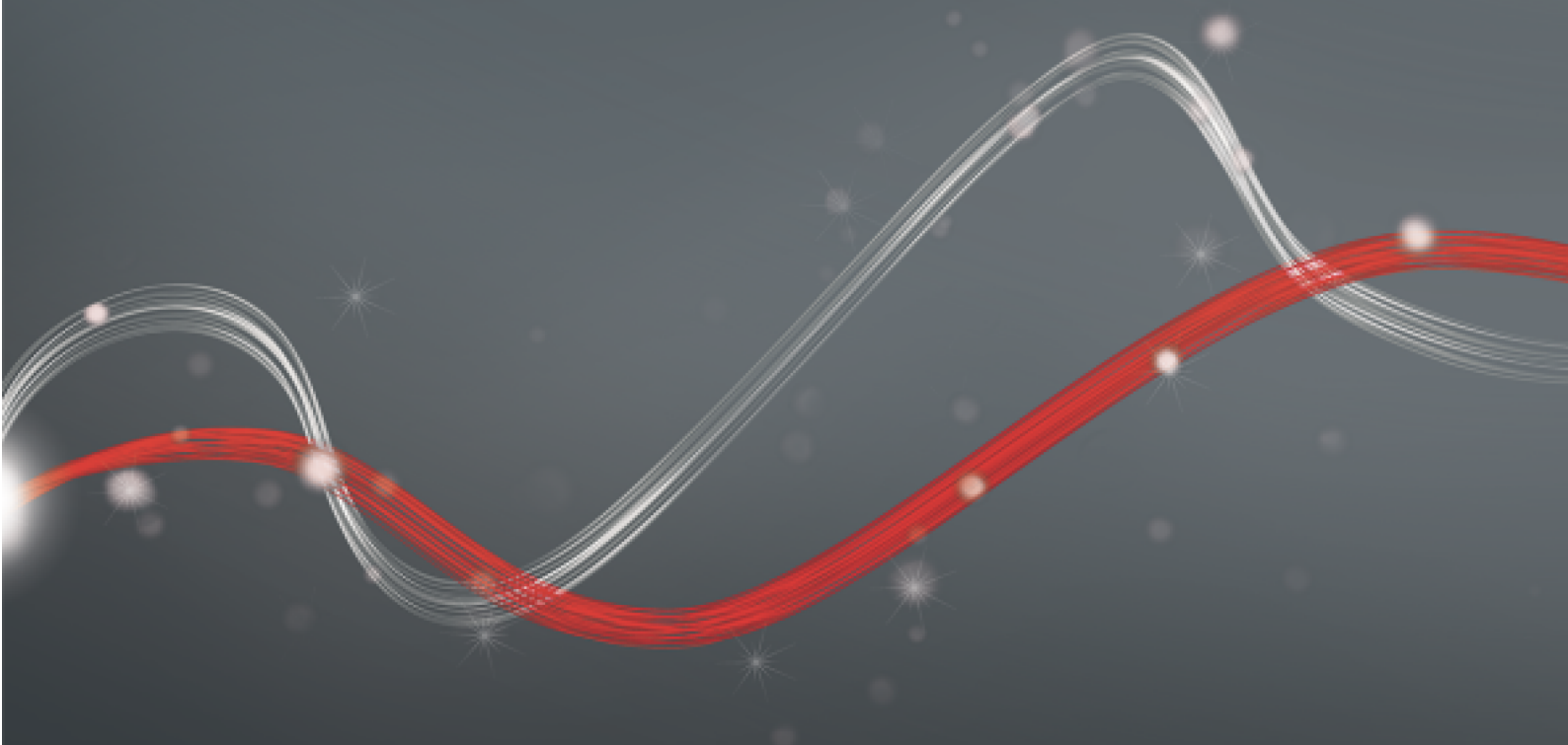




Be ahead



ARGO BT A

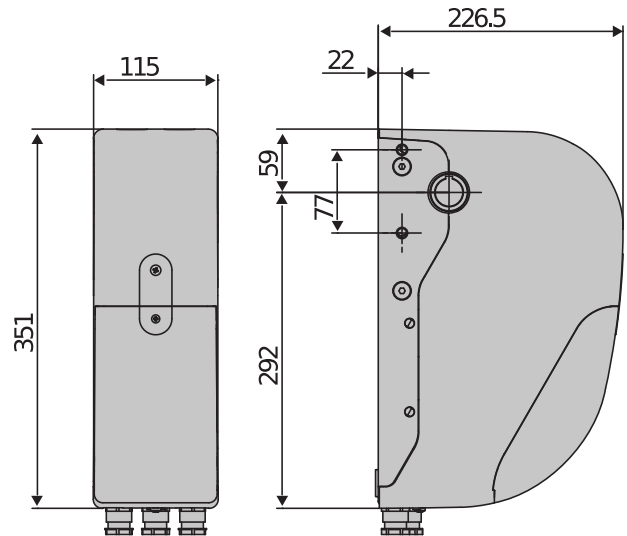




Automation systems for garage doors



Empowered by
U-LINK



24V electromechanical operator for sectional garage doors installable in residential, industrial and commercial environments. The sturdy mechanical structure and microprocessor technology of the control unit make it possible to use the operator intensively whilst ensuring maximum reliability over time. In addition, the D-Track torque control system and absolute encoder offer extremely precise control of leaf movement and detection of obstacles. Exclusive quick programming function of the limit switches from the ground, via remote control.

Relevant features



Limit switch based on absolute encoder technology, guaranteeing maximum reliability and stopping precision.



Exclusive encoder position reset knob for fast, safe installation.



Automation systems for garage doors



Relevant features





Onboard control unit with programming display and D-Track management system and torque, speed and position control. Built-in dual-channel radio receiver. U-Link. Exclusive quick programming function for limit switch from the ground via remote control.



Automation systems for garage doors



ARGO BT A

Code	Name	Description	
P925258 00002	ARGO BT A 20	Operator for sectional doors with a surface area of up to 20 m ² and subject to very intensive use. Built-in courtesy light	 U-Link
P925260 00002	ARGO BT A 35	Operator for sectional doors with a surface area of up to 35 m ² and for very intensive use. Built-in courtesy light.	 U-Link

VENERE BT A DIS: Control unit with display for 1 x 24 V operator for garage doors






VENERE BT A DIS - Built-in



- Control unit with display for 1 x 24 V operator for garage doors
- Panel power supply: 230 V, single-phase
- Power supply to motor and accessories: 24 V
- Main features: built-in four-channel receiver, D-Track anti-crushing system, soft opening and closing
- Main functions: automatic re-closing, automatic torque control
- Programming with display
- U-Link protocol
- Exclusive anti-intruder function.

	ARGO BT A 20	ARGO BT A 35
Control unit	VENERE BT A DIS ARGO	VENERE BT A DIS ARGO G
Nominal voltage	24 V	24 V
Power consumption	240 W	240 W
Type of limit switch	Absolute encoder	Absolute encoder
Door surface area	20 m ²	35 m ²
Slowdown	Yes	Yes
Locking	Mechanical	Mechanical
Release	Steel cord or cable	Steel cable
Impact reaction	D-Track	D-Track
Frequency of use	very intensive	very intensive
Protection rating	IP24	IP24
Environmental conditions	-15 ÷ 55 °C	-15 ÷ 55 °C

RECOMMENDED ACCESSORIES

	N999592 - CKK		D114093 00003 - RADIUS LED BT A R1
	Pack of mounting tabs for ARGO and ARGO G		Flashing light with incorporated antenna for motors with 24 V power supply.
	D114094 00003 - RADIUS LED BT A R0		D114168 00003 - RADIUS LED BT A R1 W
	Flashing light without incorporated antenna for motors with 24 V power supply.		Flashing light with incorporated antenna for motors with 24 V power supply. White flashing light.
	N733148 - COR 30		N733149 - COR 40
	Z30 gear kit with accessories for industrial sectional doors, for 1" (25.4 mm) shafts		Z40 gear kit with accessories for industrial sectional doors, for 1" (25.4 mm) shafts



Automation systems for garage doors



RECOMMENDED ACCESSORIES

	N733338 - PIG 12/ULISSE S Z12 pinion gear for reduction on industrial sectional doors, for 1 " (25.4 mm) shafts		N733336 - PIG 14/ULISSE S Z14 pinion gear for reduction on industrial sectional doors, for 1 " (25.4 mm) shafts
	N733339 - PIG 18/ULISSE S Z18 pinion gear for reduction on industrial sectional doors, for 1 " (25.4 mm) shafts		N733337 - PIG 30/ULISSE S Z30 pinion gear for reduction on industrial sectional doors, for 1 " (25.4 mm) shafts
	N733421 - RCA Lever release with steel cable, length 3.5 m. Compatible with BOX.		N733422 - RCAL Lever release with steel cable, length 7 m. Compatible with BOX.
	N574039 - BOX Wall cabinet for release with steel cable and electric control; cable not included		P125005 - BT BAT Set of backup batteries for LIBRA C MA, LIBRA C LX, HYDRA N, ARGO, VENERE BT A DIS



Automation systems for garage doors



Empowered by
U-LINK

What is U-Link?

The technology that gives you more power

U-Link, Universal Link, is an exclusive BFT platform that can be used to create high-tech ecosystems.

In Home Access Automation, it can be used to communicate with all home access automation devices of any brand. This saves you time and allows you to control everything easily and without any worries.

It is intuitive

Easy to install and to use

It is scalable

You can add as many devices as you want

It is flexible

It allows you to create groups of interconnected products

It is practical

Works with or without an internet connection

It is functional

Its settings can be controlled remotely using dedicated applications



Automation systems for garage doors



Everything on one screen: find out more about this amazing technology

A world-exclusive platform that **can be used to create high-tech ecosystems** offering a vast range of solutions for many different sectors.

This proprietary platform which is a key feature of BFT products, thanks to the B-EBA cards and the Clonix U-Link receiver, is suitable for any protocol or product for access automation (including BFT products non-BFT ones and older versions) and it can be used in a variety of different sectors. This means any device becomes a smart device which can be interconnected with other systems, using a language that is becoming universal.



U-Control HOME

U-Control HOME is the application that allows you to open the gate to your home and to remotely control BFT automations using your own smartphone. The iOS version can be used to automatically open the automation when you are close to it.



U-Base 2

A software package for installation, performing maintenance and identifying any faults in the U-Link compatible operators, easily and conveniently.



U-SDK

U-SDK is the application which allows BFT automations to be made compatible and easily integrated with a BMS network.



Clonix U-Link

Connect non-native U-Link and non-BFT products to U-Link systems.

Is it possible to connect non-native U-Link BFT operators or other brands of products to U-Link? Yes, thanks to the Clonix receivers. Accessories which accept no limits.



B-EBA

A direct link to your operators.

The B-EBA expansion cards make it possible to connect external devices such as PCs, smartphones and tablets to a BFT operator and a Clonix receiver or to connect multiple BFT products in a U-Link network. These accessories integrate with U-Link technology and with Bluetooth, Wifi, Z-Wave and TCP/IP protocols as well as with the RS485 serial interface. A device that demonstrates exactly what BFT means by interconnectivity.

