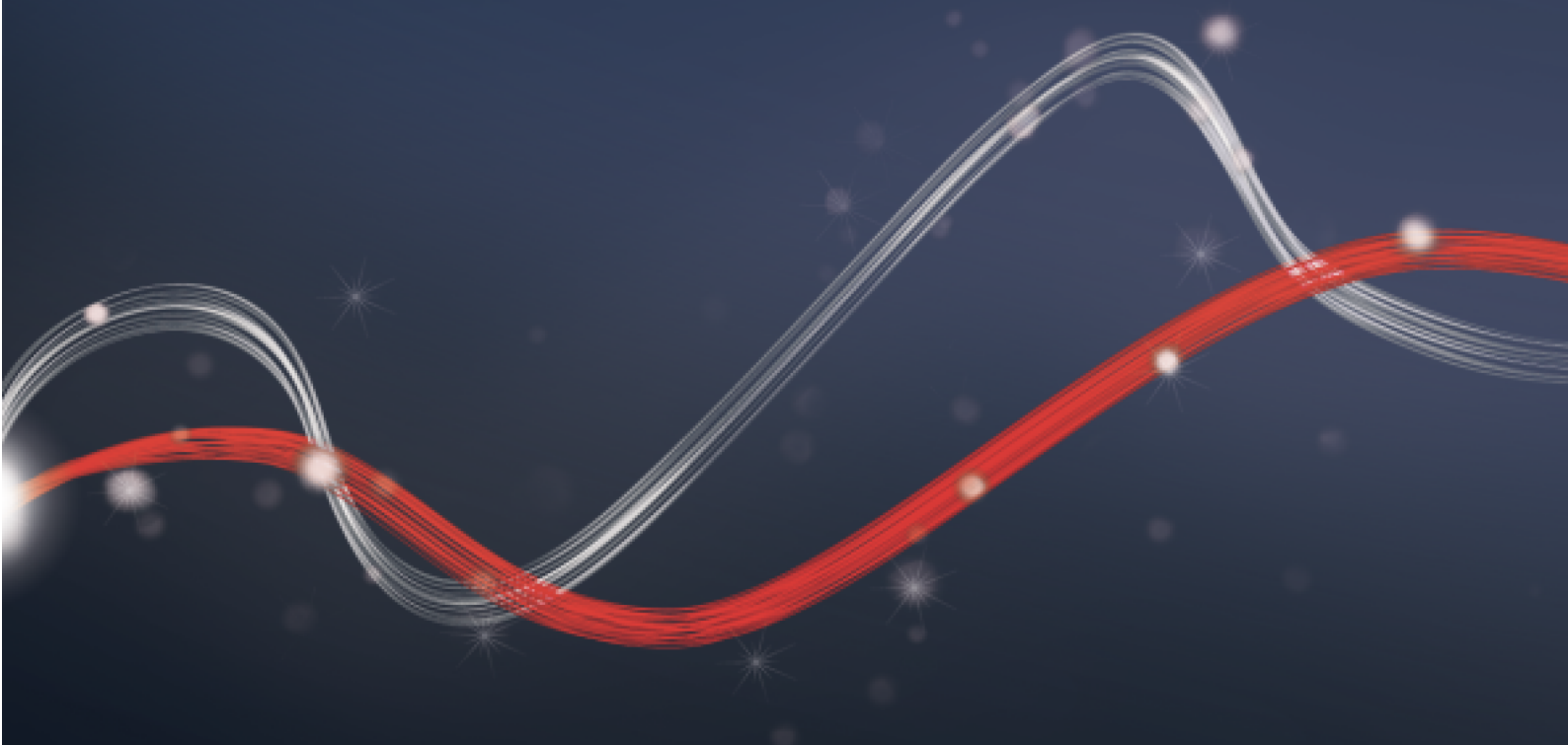




Be ahead

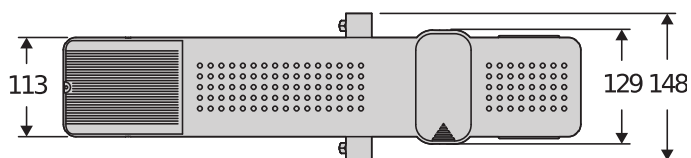
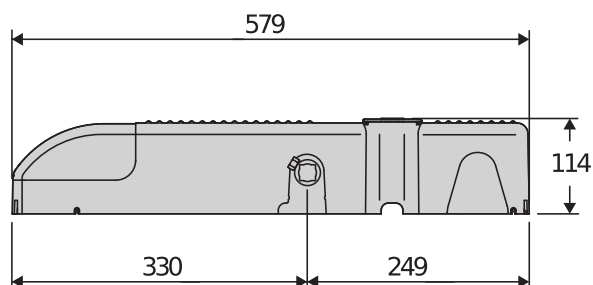


PHEBE





Automation systems for garage doors

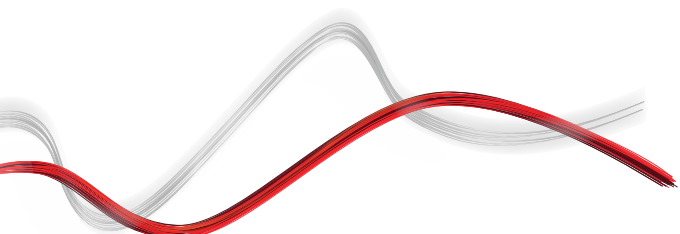


Electromechanical operator for residential use for the automation of overhead garage doors.
The built-in control unit manages the second operator for installation on large-size doors or doors with integrated pedestrian doors.
The microprocessor technology also manages the torque of the motors with maximum precision and in total safety.

Relevant features



Release knob protected by a safety door; can also be operated from outside by means of a steel cable.





Automation systems for garage doors

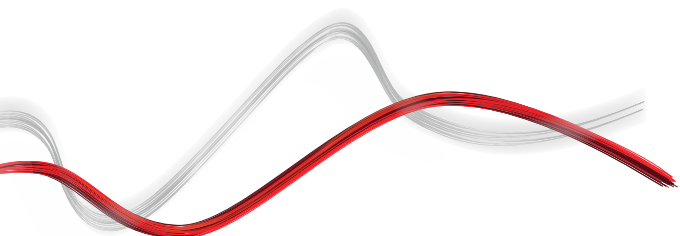
Relevant features



Quickly and easily adjustable limit switched on board motor.



Control unit incorporated with torque self-learning system, programming display and on-board radio receiver.





Automation systems for garage doors

PHEBE

Code	Name		Description
P915134 00102	PHEBE N		Electromechanical operator with built-in control panel for overhead garage doors of maximum surface area 7 m ² and Semi intensive use with slowdown. Cycle time 17-20 s, IP20 Control unit incorporated with torque self-learning system
P915135 00102	PHEBE N SQ		Operator for overhead garage doors of maximum surface area 7 m ² and Semi intensive use. Cycle time 17-20 s, IP20 Limit switch on-board the motor
P915134 00104	PHEBE N C		Operator with incorporated panel for articulated leaf up&over garage doors of maximum surface area 7 m ² and duty Semi intensive with slowdown. Manoeuvre time 17-20 s, IP20 Limit switch on-board the motor
P915134 00106	PHEBE N IP44		Electromechanical operator with built-in control panel for overhead garage doors of maximum surface area 7 m ² and Semi intensive use with slowdown. Cycle time 17-20 s, IP44 Control unit incorporated with torque self-learning system

HYDRA N: Control panel for one or two overhead garage door operators

HYDRA N - Built-in



- Control panel for one or two overhead garage door operators
- Application: control panel for one or two overhead garage door operators
- Card power supply: 230 V single-phase
- Operators power supply: 24Vdc 168W max each operator
- Main features: removable terminal blocks, programming with display and incorporated dual channel receiver, anti-crushing, slowdown during opening and closing and electronic self-learning
- Main functions: automatic re-closing, fast closing, pulse blocking, blocking hold
- Compatibility: HYDRA, HYDRA R
- Version for application on board motor, not compatible with installation on external panel.

	PHEBE N	PHEBE N SQ	PHEBE N C	PHEBE N IP44
Control unit	HYDRA N	HYDRA N	HYDRA N	HYDRA N
Nominal voltage	24 V	24 V	24 V	24 V
Power consumption	40 W	40 W	40 W	40 W
Cycle time	17-20 s	17-20 s	17-20 s	17-20 s
Door surface area	7 m ²	7 m ²	7 m ²	7 m ²
Type of limit switch	Electromechanical	Electromechanical	Electromechanical	Electromechanical
Slowdown	Yes	Yes	Yes	Yes
Locking	Mechanical	Mechanical	Mechanical	Mechanical
Release	knob	knob	knob	knob
Impact reaction	Electronic torque limiter	Electronic torque limiter	Electronic torque limiter	Electronic torque limiter
Frequency of use	Semi intensive	Semi intensive	Semi intensive	Semi intensive
Protection rating	IP20	IP20	IP20	IP44
Environmental conditions	-15 ÷ 60 °C	-15 ÷ 60 °C	-15 ÷ 60 °C	-15 ÷ 60 °C

RECOMMENDED ACCESSORIES

	D113730 00002 - HYDRA N CPEL		N733299 - CTBP
	HYDRA N control board in CPEL panel		Pack of 1800 mm drive tubes and fixing bases for completing the PHEBE N KIT



Automation systems for garage doors

RECOMMENDED ACCESSORIES

	D412377 - BCP Short welding base for PHEBE series operators (L 578 mm)		N733288 - BLP Long welding base for PHEBE series operators (L 1600 mm)
	N733120 - CTA 2 square drive tubes of cross section 20x20 mm and length 1800 mm for PHEBE N series operators		N733129 - CTA2 2 square drive tubes of cross section 20x20 mm and length 200 mm for PHEBE N series operators
	N733112 - CBA Straight telescopic arms for the installation of PHEBE series operators on overhead door		N733119 - CBAS Straight telescopic arms for the installation of PHEBE series operators on overhead door of length 1000 mm
	N733113 - CBASL Straight telescopic arms for the installation of PHEBE series operators on overhead door of length 1500 mm		N733114 - CBAC Curved telescopic arms for the installation of PHEBE series operators on overhead door
	N733221 - CBAC-G Curved telescopic arms for installation of PHEBE BT A series operators on up-and-over doors		P115005 - SM1 External manual release for overhead garage door (1 operator)
	P115001 - SM2 External manual release for overhead garage door (2 operators)		P125005 - BT BAT Set of backup batteries for LIBRA C MA, LIBRA C LX, HYDRA N, ARG0, VENERE BT A DIS
	P125007 - BT BAT1 Emergency battery kit for HYDRA N CPEL, only for external board not compatible with board on motor		



Automation systems for garage doors

What is U-Link?

The technology that gives you more power

U-Link, Universal Link, is an exclusive BFT platform that can be used to create high-tech ecosystems.

In Home Access Automation, it can be used to communicate with all home access automation devices of any brand. This saves you time and allows you to control everything easily and without any worries.

It is intuitive

Easy to install and to use

It is scalable

You can add as many devices as you want

It is flexible

It allows you to create groups of interconnected products

It is practical

Works with or without an internet connection

It is functional

Its settings can be controlled remotely using dedicated applications



Automation systems for garage doors

Everything on one screen: find out more about this amazing technology

A world-exclusive platform that **can be used to create high-tech ecosystems** offering a vast range of solutions for many different sectors.

This proprietary platform which is a key feature of BFT products, thanks to the B-EBA cards and the Clonix U-Link receiver, is suitable for any protocol or product for access automation (including BFT products non-BFT ones and older versions) and it can be used in a variety of different sectors. This means any device becomes a smart device which can be interconnected with other systems, using a language that is becoming universal.



U-Control HOME

U-Control HOME is the application that allows you to open the gate to your home and to remotely control BFT automations using your own smartphone. The iOS version can be used to automatically open the automation when you are close to it.



U-Base 2

A software package for installation, performing maintenance and identifying any faults in the U-Link compatible operators, easily and conveniently.



U-SDK

U-SDK is the application which allows BFT automations to be made compatible and easily integrated with a BMS network.



Clonix U-Link

Connect non-native U-Link and non-BFT products to U-Link systems.

Is it possible to connect non-native U-Link BFT operators or other brands of products to U-Link? Yes, thanks to the Clonix receivers. Accessories which accept no limits.



B-EBA

A direct link to your operators.

The B-EBA expansion cards make it possible to connect external devices such as PCs, smartphones and tablets to a BFT operator and a Clonix receiver or to connect multiple BFT products in a U-Link network. These accessories integrate with U-Link technology and with Bluetooth, Wifi, Z-Wave and TCP/IP protocols as well as with the RS485 serial interface. A device that demonstrates exactly what BFT means by interconnectivity.

