



Be ahead

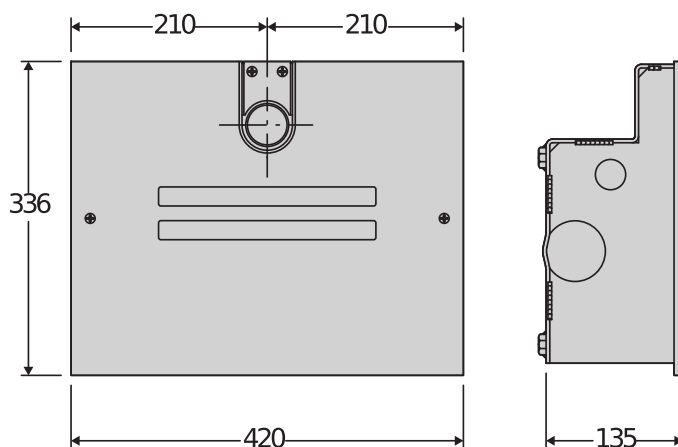


# ELI BT A





## Electromechanical automation systems for swing gates



A complete range of in-ground non-reversible electromechanical operators for swing gates up to 4m long with 24V technology. The integrated mechanical stops for both opening and closing, allowing the option of a simple installation by reducing the need for physical stops. The encoder-based limit switch system offers precision and quick installation. The VELOCE version offers reduced waiting times on opening and closing.



## Electromechanical automation systems for swing gates

### Relevant features



**Fast**

**Super fast BT35 motors:** Maximum comfort. Fast opening is ideal for sites which require reduced waiting times meaning you can quickly clear busy or hazardous roads. Fast closing can help to improve security keeping the property safer from intruders.



**Encoder**

**BT motors with relative encoder:** No more need to assemble and adjust the limit switches, reducing installation time.



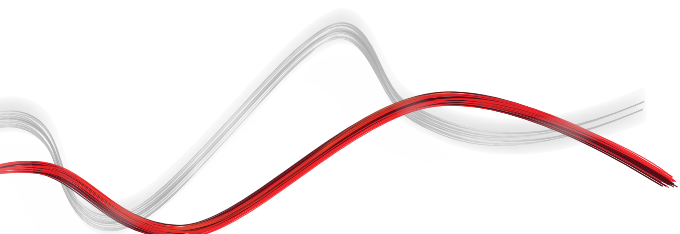
**New secondary arm:** quicker and more secure attachment to the primary shaft, for a more reliable installation!



**New crown produced in XECARB® (available for the models AC a 40, BT A 40):** highly resistant thermal-plastic composite, widely used in sport and aerospace, allows the use on heavier gates with a longer service life.



**Integrated mechanical stops:** for both opening and closing, allowing the option of a simple installation by reducing the need for physical stops.





## Electromechanical automation systems for swing gates

## ELI BT A

Code	Ci	Name	Description
P930133 00002	2601454	ELI VELOCE BT A35	Underground electromechanical operator 24 V for swing gates up to 3,5 m in length. Relative encoder limit switches
P930134 00002	2601455	ELI BT A40	Underground electromechanical operator 24 V for swing gates up to 4 m in length. Relative encoder limit switches
R935010 70004	2602993	ELI BT A35 FAST DOUBLE KIT	Full kit for the automation of swing gates with in-ground 24 V electromechanical operators. Compatible with gates up to 3,5 m long. Relative encoder limit switch. Foundation boxes not included.
R935010 70005	2602993	ELI BT A35 FAST DOUBLE KIT - SAFETY	Full kit for the automation of swing gates with in-ground 24 V electromechanical operators. Compatible with gates up to 3,5 m long. Relative encoder limit switch. Foundation boxes not included.
R935010 70006	2602993	ELI BT A40 DOUBLE KIT	Full kit for the automation of swing gates with in-ground 24 V electromechanical operators. Compatible with gates up to 4 m long. Relative encoder limit switch. Foundation boxes not included.
R935010 70007	2602993	ELI BT A40 DOUBLE KIT - SAFETY	Full kit for the automation of swing gates with in-ground 24 V electromechanical operators. Compatible with gates up to 4 m long. Relative encoder limit switch. Foundation boxes not included.

	ELI VELOCE BT A35	ELI BT A40
Motor voltage	24 V	24 V
Compatible control unit	THALIA BT A80, THALIA, THALIA P	THALIA BT A80, THALIA, THALIA P
Max. width of door/gate wing	3,5 m	4 m
Max. length gate panel without electric lock	2 m	2,5 m
Max. motor torque	250 Nm	350 Nm
Max. opening cycles per hour	50	Continuous
Maximum angle	120 °	120 °
Speed	2 Rpm	1,1 Rpm
Opening time to 90°	10" (with slowdown)	14" (with slowdown)
Limit switch standard	Relative encoder	Relative encoder
Limit switch optional	Magnetic	Magnetic
Mechanical stops	OP+CL	OP+CL
Release	Lever or lever with personalised key	Lever or lever with personalised key
Impact reaction	Electronic clutch (with control panel)	Electronic clutch (with control panel)
Protection rating	IP67	IP67
Environmental conditions	-20 ÷ 55 °C	-20 ÷ 55 °C



## Electromechanical automation systems for swing gates

### VITAL ACCESSORIES

	 <b>Cp D113745 00002 - Ci 2600477</b> <b>THALIA</b>		 <b>Cp D113747 00002 - Ci 2600583</b> <b>THALIA P</b>
	<b>Cp N733397 - Ci 2600789</b> <b>BTCF 120 E</b>		<b>Cp N733398 - Ci 2600091</b> <b>BTCF 120 E INOX</b>
	 <b>Cp N733993 - Ci 2603381</b> <b>BTCF-120E PLUS</b>		 <b>Cp N733994 - Ci 2603382</b> <b>BTCF-120E PLUS STAINLESS STEEL</b>
	<b>Cp N733392 - Ci 2600478</b> <b>SCC</b>		<b>Cp N733502 - Ci 2610959</b> <b>SCP</b>

### RECOMMENDED ACCESSORIES

	<b>Cp N733304 - Ci 2600236</b> <b>E180</b>		<b>Cp N733951 - Ci 2601457</b> <b>FCE</b>
	<b>Cp P111782 - Ci 2601411</b> <b>COMPACTA A20-180</b>		<b>Cp D114094 00003 - Ci 2607541</b> <b>RADIUS LED BT A R0</b>
	<b>Cp D114168 00003 - Ci 2607544</b> <b>RADIUS LED BT A R1 W</b>		<b>Cp D114093 00003 - Ci 2607539</b> <b>RADIUS LED BT A R1</b>
	<b>Cp P125020 - Ci 2600844</b> <b>BBT BAT</b>		



ELI BT A



Electromechanical automation systems for swing gates

# EasyAXS

EASY CONNECT. EASY ACCESS.



The new connectivity solution which boosts the potential of BFT products and services to make access automations smarter and easier to use for both installers and end users.







Electromechanical automation systems for swing gates

## EASY TO CONNECT

### WIFI MODULE



→ 10/15 metres

### WIFI MODULE + ANTENNA



→ 20/25 metres

### MOBILE MODULE + ANTENNA + SIM



→ ∞



**PLUG&PLAY  
INSTALLATION**



**ALWAYS  
CONNECTED**



**EVEN MORE  
CONNECTIVITY**



**EASY TO SET UP  
FOR INSTALLERS**



**EASY TO CONTROL  
FOR CUSTOMERS**





Electromechanical automation systems for swing gates



# U-LINK 2.0

AN UPDATED VERSION OF  
**U-LINK** TO GIVE YOU EVEN  
MORE FUNCTIONALITY



## Scalable

You can add as many devices as you want



## Intuitive

Easy to install and to use



## Functional

Settings can be controlled and firmware updated remotely using dedicated applications



## Practical

Works with or without an internet connection



## Flexible

It allows you to create groups of interconnected products

**U-Link**, the exclusive **BFT** technology platform has evolved to offer improved interaction with the latest generation of technological ecosystems. Its ability to interface with all home access automation access devices has been expanded, meaning it is now a very useful tool for installers. It is also a faster communication protocol with increased security for communicating information.

It allows you to save even more time, checking everything very easily and giving you even more peace of mind.





Electromechanical automation systems for swing gates



## A NEW AND EVEN MORE SECURE RADIO PROTOCOL



### Secure

By transmitting data protected by a cryptographic key

**U-Security** is the new technology from **BFT** which incorporates encrypted rolling code thanks to the encryption key which masks the remote control code, meaning that it is impossible to clone a BFT remote control using another brand's model.



### Easy

Pairing a remote control with a receiver can be done easily by scanning the QR code and using the dedicated app

The functions of the **Er Ready** system are incorporated and a new procedure is also available for programming remote controls by scanning a QR CODE and using a special app. All products featuring this technology are REPLAY, so they can transmit the code to another BFT remote control using a combination of keys.



### Universal

The radio protocol is also compatible with the previous generation of receivers

