



Be ahead

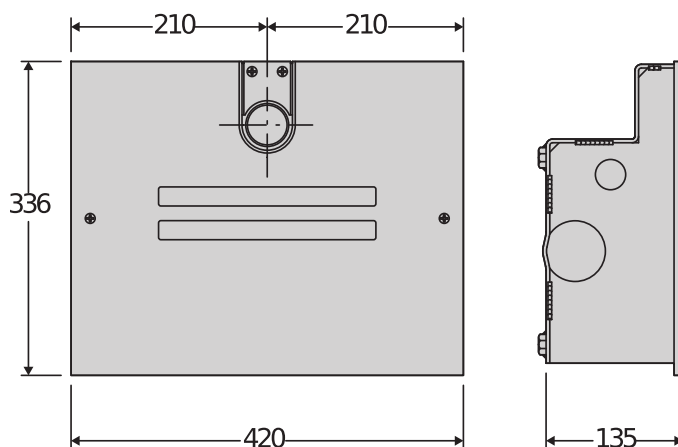
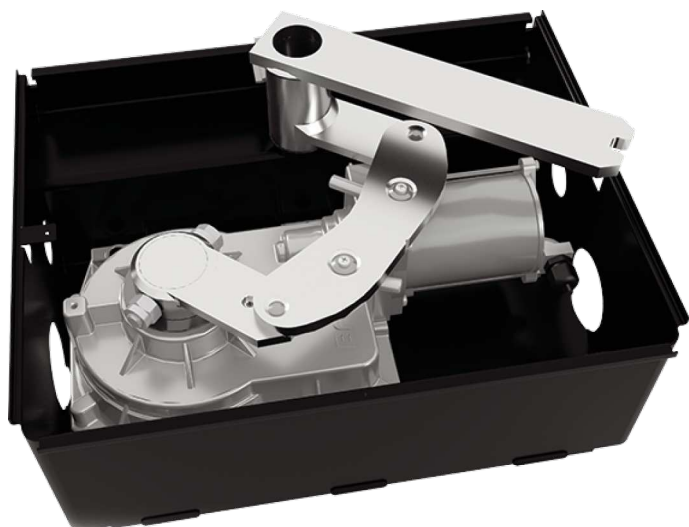


ELI AC A





Electromechanical automation systems for swing gates



A complete range of in-ground non-reversible electromechanical operators for swing gates up to 4m long with 230V motors. The integrated mechanical stops for both opening and closing, allowing the option of a simple installation by reducing the need for physical stops. The magnetic limit switch system (optional) ensures the highest levels of accuracy and reliability over time in all weather conditions. The VELOCE version offers reduced waiting times on opening and closing.



Electromechanical automation systems for swing gates

Relevant features



Super fast AC35 motors: Maximum comfort. Fast opening is ideal for sites which require reduced waiting times meaning you can quickly clear busy or hazardous roads. Fast closing can help to improve security keeping the property safer from intruders.



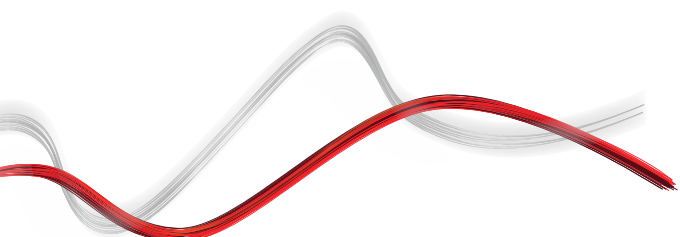
New secondary arm: quicker and more secure attachment to the primary shaft, for a more reliable installation!



New crown produced in XECARB® (available for the models AC a 40, BT A 40): highly resistant thermal-plastic composite, widely used in sport and aerospace, allows the use on heavier gates with a longer service life.



Integrated mechanical stops: for both opening and closing, allowing the option of a simple installation by reducing the need for physical stops.





Electromechanical automation systems for swing gates

ELI AC A

Code	Ci	Name	Description
P930131 00002	2601464	ELI VELOCE AC A35	230 V electromechanical in-ground operator for swing gates up to 3,5 m long. Magnetic limit switches - Optional
P930132 00002	2601473	ELI AC A40	Underground electromechanical operator 230 V for swing gates up to 4 m in length. Magnetic limit switches - Optional

RIGEL 6 220-230V 50/60HZ: Universal control panel with display for one or two 230V - 650+650W operators



Cp D113833 00002 - Ci 2600589 - RIGEL 6 220-230V 50/60HZ - Recommended



- Universal control panel with display for one or two 230V - 650+650W operators
- Application: universal control panel for one or two operators
- Card power supply: 230 V single-phase
- Operators power supply: 230V single-phase
- Main features: removable terminal blocks, programming and diagnostics with display, built-in four-channel receiver, electro lock, electronic torque limiter, electronic deceleration at opening and closing, a separate limit switch inputs for each motor, traffic light management, preheating hydraulic operators, weekly timer, possibility to delete a specific remote control, customization of the 4 radio channels, personalization of the duration of the delayed output, adjustable sensitivity to the obstacle.
- Main functions: automatic re-closing, separate motor working times, stays locked when closed, water hammer, 2/3/4 step logic, partial opening, fast closing, separate opening and closing
- Compatibility: RIGEL 5 - RIGEL 4 - RIGEL 3 - RIGEL N

	ELI VELOCE AC A35	ELI AC A40
Motor voltage	230 V	230 V
Compatible control unit	RIGEL6, ALENA SW2	RIGEL6, ALENA SW2
Max. width of door/gate wing	3,5 m	4 m
Max. length gate panel without electric lock	2 m	2,5 m
Max. motor torque	200 Nm	350 Nm
Max. opening cycles per hour	40	20
Maximum angle	120 °	120 °
Speed	2,5 Rpm	1,45 Rpm
Opening time to 90°	11" (no slowdown)	13" (no slowdown)
Limit switch standard	N/A	N/A
Limit switch optional	Magnetic	Magnetic
Mechanical stops	OP+CL	OP+CL
Release	Lever or lever with personalised key	Lever or lever with personalised key
Impact reaction	Electronic clutch (with control panel)	Electronic clutch (with control panel)
Protection rating	IP67	IP67
Environmental conditions	-20 ÷ 55 °C	-20 ÷ 55 °C

VITAL ACCESSORIES



Cp N733397 - Ci 2600789 BTCF 120 E

Foundation box with levers for ELI AC A, ELI BT A. Release not supplied







Cp N733398 - Ci 2600091 BTCF 120 E INOX

Stainless steel foundation box with levers for ELI AC A, ELI BT A. Release not provided











Electromechanical automation systems for swing gates

VITAL ACCESSORIES

 Cp N733993 - Ci 2603381 BTCF-120E PLUS Reinforced foundation box for heavy or intensive use gates. Includes levers for ELI AC A, ELI BT A. Manual release not included.	 new Cp N733994 - Ci 2603382 BTCF-120E PLUS STAINLESS STEEL Reinforced stainless steel foundation box for heavy or intensive use gates. Includes levers for ELI AC A, ELI BT A. Manual release not included.
 Cp N733392 - Ci 2600478 SCC Release for ELI AC A, ELI BT A and SUB BT with lever key.	 Cp N733502 - Ci 2610959 SCP Release for ELI AC A, ELI BT A and SUB BT with personalized key.

RECOMMENDED ACCESSORIES

 Cp N733304 - Ci 2600236 E180 Accessory for opening to 180° for ELI AC A40, ELI BT A40 operator	 Cp N733951 - Ci 2601457 FCE Magnetic limit switches for BT and AC models.
 Cp P111782 - Ci 2601411 COMPACTA A20-180 Pair of photocells adjustable 180° horizontally. 20 metre range. 12-33 VAC/15-35 VDC power supply.	 Cp R400009 - Ci 2611783 KIT COMPACTA - PHP Kit complete with a pair of aluminum posts for photocells height 522mm and a pair of Compacta A20-180 photocells adjustable 180° horizontally, range 20m, power supply 12 – 33Vac / 15 – 35Vdc
 Cp D114094 00002 - Ci 2607540 RADIUS LED AC A R0 Flashing light without incorporated antenna for motors with 230 V power supply.	 Cp D114093 00002 - Ci 2607538 RADIUS LED AC A R1 Flashing light with incorporated antenna for motors with 230 V power supply.
 new Cp P123032 00001 - Ci 2613516 EBP AC A 230V 50/60HZ 230V vertical electric lock.	 new Cp P123032 00002 - Ci 2613517 EBP AC A 120V 50/60Hz 120V vertical electric lock.



ELI AC A



Electromechanical automation systems for swing gates

EasyAXS

EASY CONNECT. EASY ACCESS.



The new connectivity solution which boosts the potential of BFT products and services to make access automations smarter and easier to use for both installers and end users.





Electromechanical automation systems for swing gates

EASY TO CONNECT

WIFI MODULE



→ 10/15 metres

WIFI MODULE + ANTENNA



→ 20/25 metres

MOBILE MODULE + ANTENNA + SIM



→ ∞



**PLUG&PLAY
INSTALLATION**



**ALWAYS
CONNECTED**



**EVEN MORE
CONNECTIVITY**



**EASY TO SET UP
FOR INSTALLERS**



**EASY TO CONTROL
FOR CUSTOMERS**





Electromechanical automation systems for swing gates



U-LINK 2.0

AN UPDATED VERSION OF
U-LINK TO GIVE YOU EVEN
MORE FUNCTIONALITY



Scalable

You can add as many devices as you want



Intuitive

Easy to install and to use



Functional

Settings can be controlled and firmware updated remotely using dedicated applications



Practical

Works with or without an internet connection



Flexible

It allows you to create groups of interconnected products

U-Link, the exclusive **BFT** technology platform has evolved to offer improved interaction with the latest generation of technological ecosystems. Its ability to interface with all home access automation access devices has been expanded, meaning it is now a very useful tool for installers. It is also a faster communication protocol with increased security for communicating information.

It allows you to save even more time, checking everything very easily and giving you even more peace of mind.



Electromechanical automation systems for swing gates



A NEW AND EVEN MORE SECURE RADIO PROTOCOL



Secure

By transmitting data protected by a cryptographic key

U-Security is the new technology from **BFT** which incorporates encrypted rolling code thanks to the encryption key which masks the remote control code, meaning that it is impossible to clone a BFT remote control using another brand's model.



Easy

Pairing a remote control with a receiver can be done easily by scanning the QR code and using the dedicated app

The functions of the **Er Ready** system are incorporated and a new procedure is also available for programming remote controls by scanning a QR CODE and using a special app. All products featuring this technology are **REPLAY**, so they can transmit the code to another BFT remote control using a combination of keys.



Universal

The radio protocol is also compatible with the previous generation of receivers

