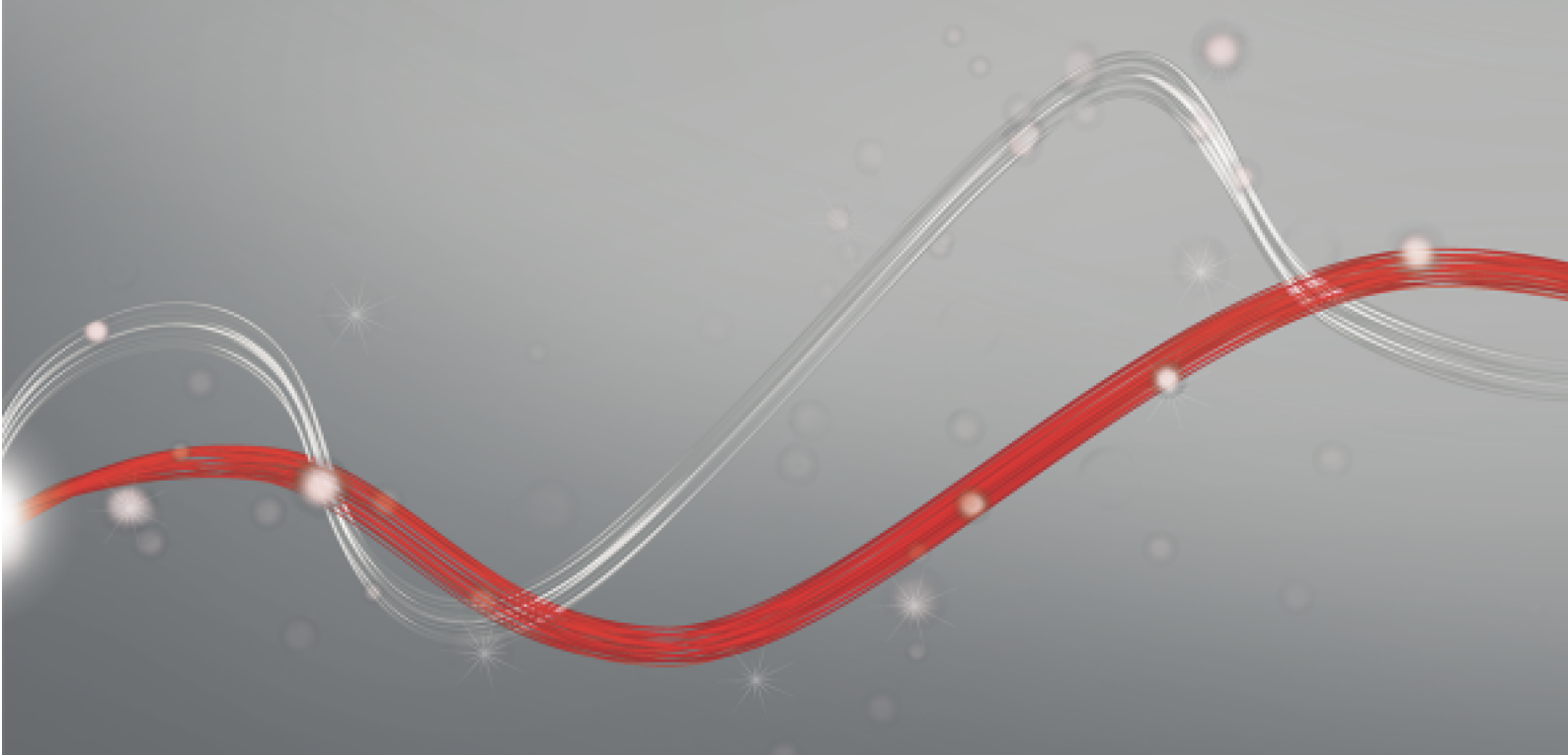




Be ahead



# ESPAS 30 P ULTRA

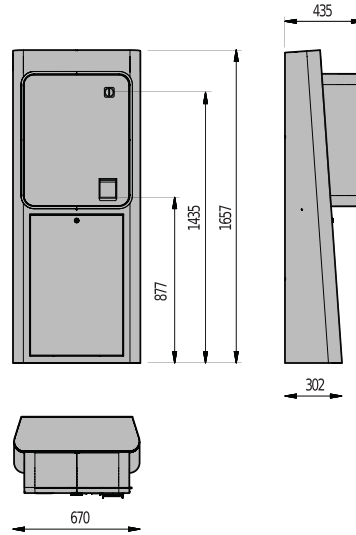




# ESPAS 30 P ULTRA



## ESPAS 30 ULTRA



ESPAS 30 P ULTRA 自动泊车系统为撒撒有翁停车褶纒習焉供最高性能自动收银服务。  
 该单元作为纒習其擺元素之间的一摞组件焉有翁网络中工作。  
 凭新标摞组件之间的明确分工、線单、熾尚的稿形界面、音频树 LED 砵指南殺柿排業鼓勵用激熵撒。  
 灑币站采用排度模慘化殺柿满足标种需痊殺渗有多摞被具供您选炊。

ESPAS 30 P ULTRA	
电桌	230 VAC ±10%, 50Hz 60Hz
最禁功耗	350 W
激机功耗	150 W
工作温度	0 ÷ 50 °C
尺决	1657 x 670 x 435 mm
疏重	100 kg
葵准通斐接口	TCP/IP
葵准颜色	RAL7015
材料	机猫材质为 2,0 毫米厚DD11 (UNI EN 10111)钢猿柿曾门厚度为 3,0 毫米柿曾面猿材质为耐粘防刮聚酸酯。

代码	名称	□□□□	□□□□□□ □	IP □□□	□□□□□	□□□□□	□□□	□□□□□	□□□□□□	□□□	□□□□□□□□ □□□□□
PA1D402R10000	ESPAS 30 P ULTRA EUR CC FRA RF	●	●							●	●
PA1D402R11000	ESPAS 30 P ULTRA EUR CC FRA RF CIT BUS	●	●		●					●	●
PA1D402R12000	ESPAS 30 P ULTRA EUR CC FRA RF CIT IP	●	●	●						●	●
PA1D404R10000	ESPAS 30 P ULTRA EUR CC DEU RF	●	●							●	●

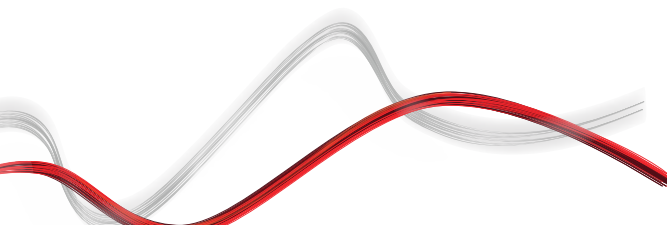


# ESPAS 30 P ULTRA



## ESPAS 30 ULTRA

代码	名称	□□□□	□□□/□□□□ □	IP □□□	□□□□□	□□□□□	□□□	□□□□□	□□□□□□	□□□	□□□□□□ □□□□□
PA1D404R11000	ESPAS 30 P ULTRA EUR CC DEU RF CIT BUS	●	●		●					●	●
PA1D404R12000	ESPAS 30 P ULTRA EUR CC DEU RF CIT IP	●	●	●						●	●
PA1D607R10000	ESPAS 30 P ULTRA HRK CC HRV RF	●	●							●	●
PA1D607R11000	ESPAS 30 P ULTRA HRK CC HRV RF CIT BUS	●	●		●					●	●
PA1D607R12000	ESPAS 30 P ULTRA HRK CC HRV RF CIT IP	●	●	●						●	●
PA1D105R10000	ESPAS 30 P ULTRA AUD CC AUS RF	●	●							●	●
PA1D105R11000	ESPAS 30 P ULTRA AUD CC AUS RF CIT BUS	●	●		●					●	●
PA1D105R12000	ESPAS 30 P ULTRA AUD CC AUS RF CIT IP	●	●	●						●	●
PA1DD06R10000	ESPAS 30 P ULTRA PLN CC POL RF	●	●							●	●
PA1DD06R11000	ESPAS 30 P ULTRA PLN CC POL RF CIT BUS	●	●		●					●	●
PA1DD06R12000	ESPAS 30 P ULTRA PLN CC POL RF CIT IP	●	●							●	●
PA1D503R10000	ESPAS 30 P ULTRA GBP CC UK RF	●	●							●	●
PA1D503R11000	ESPAS 30 P ULTRA GBP CC UK RF CIT BUS	●	●		●					●	●
PA1D503R12000	ESPAS 30 P ULTRA GBP CC UK RF CIT IP	●	●	●						●	●
PA1D410R10000	ESPAS 30 P ULTRA EUR M RF	●	●					●			●
PA1D4A0R10000	ESPAS 30 P ULTRA EUR B R RF	●	●			●			●		●
PA1D4F0R10000	ESPAS 30 P ULTRA EUR M B H R RF	●	●			●	●	●	●		●
PA1D4F0R11000	ESPAS 30 P ULTRA EUR M B H R RF CIT BUS	●	●		●	●	●	●	●		●
PA1D4F0R12000	ESPAS 30 P ULTRA EUR M B H R RF CIT IP	●	●	●		●	●	●	●		●
PA1D4F2R10000	ESPAS 30 P ULTRA EUR M B H R CC FRA RF	●	●			●	●	●	●	●	●
PA1D4F2R11000	ESPAS 30 P ULTRA EUR M B H R CC FRA RF CIT BUS	●	●		●	●	●	●	●	●	●
PA1D4F2R12000	ESPAS 30 P ULTRA EUR M B H R CC FRA RF CIT IP	●	●	●		●	●	●	●	●	●



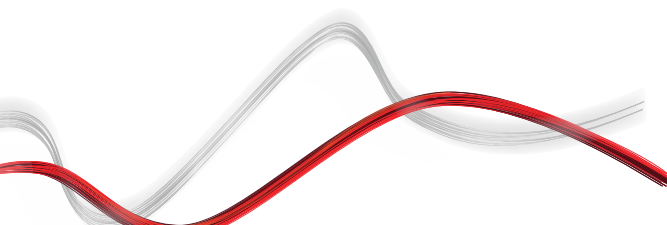


# ESPAS 30 P ULTRA



## ESPAS 30 ULTRA

代码	名称	□□□□	□□□/□□□□ □	IP □□□	□□□□□	□□□□□	□□□	□□□□□	□□□□□□	□□□	□□□□□□□□ □□□□□
PA1D4F4R10000	ESPAS 30 P ULTRA EUR M B H R CC DEU RF	●	●		●	●	●	●	●	●	●
PA1D4F4R11000	ESPAS 30 P ULTRA EUR M B H R CC DEU RF CIT BUS	●	●		●	●	●	●	●	●	●
PA1D4F4R12000	ESPAS 30 P ULTRA EUR M B H R CC DEU RF CIT IP	●	●	●	●	●	●	●	●	●	●
PA1D6F0R10000	ESPAS 30 P ULTRA HRK M B H R RF	●	●		●	●	●	●			●
PA1D6F0R11000	ESPAS 30 P ULTRA HRK M B H R RF CIT BUS	●	●		●	●	●	●	●		●
PA1D6F0R12000	ESPAS 30 P ULTRA HRK M B H R RF CIT IP	●	●	●	●	●	●	●	●		●
PA1D6F7R10000	ESPAS 30 P ULTRA HRK M B H R CC HRV RF	●	●		●	●	●	●	●	●	●
PA1D6F7R11000	ESPAS 30 P ULTRA HRK M B H R CC HRV RF CIT BUS	●	●		●	●	●	●	●	●	●
PA1D6F7R12000	ESPAS 30 P ULTRA HRK M B H R CC HRV RF CIT IP	●	●	●	●	●	●	●	●	●	●
PA1D110R10000	ESPAS 30 P ULTRA AUD M RF	●	●					●			●
PA1D1A0R10000	ESPAS 30 P ULTRA AUD B R RF	●	●		●				●		●
PA1D1F0R10000	ESPAS 30 P ULTRA AUD M B H R RF	●	●		●	●	●	●	●		●
PA1D1F0R11000	ESPAS 30 P ULTRA AUD M B H R RF CIT BUS	●	●		●	●	●	●	●		●
PA1D1F0R12000	ESPAS 30 P ULTRA AUD M B H R RF CIT IP	●	●	●	●	●	●	●	●		●
PA1D1F5R10000	ESPAS 30 P ULTRA AUD M B H R CC AUS RF	●	●		●	●	●	●	●	●	●
PA1D1F5R11000	ESPAS 30 P ULTRA AUD M B H R CC AUS RF CIT BUS	●	●		●	●	●	●	●	●	●
PA1D1F5R12000	ESPAS 30 P ULTRA AUD M B H R CC AUS RF CIT IP	●	●	●	●	●	●	●	●	●	●
PA1DD10R10000	ESPAS 30 P ULTRA PLN M RF	●	●					●			●
PA1DDA0R10000	ESPAS 30 P ULTRA PLN B R RF	●	●		●				●		●
PA1DDF0R10000	ESPAS 30 P ULTRA PLN M B H R RF	●	●		●	●	●	●	●		●
PA1DDF0R110000	ESPAS 30 P ULTRA PLN M B H R RF CIT BUS	●	●		●	●	●	●	●		●
PA1DDF0R120000	ESPAS 30 P ULTRA PLN M B H R RF CIT IP	●	●	●	●	●	●	●	●		●



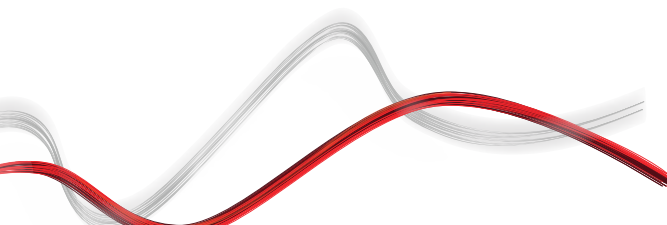


# ESPAS 30 P ULTRA



## ESPAS 30 ULTRA

代码	名称	□□□□	□□□/□□□□ □	IP □□□	□□□□□	□□□□□	□□□	□□□□□	□□□□□□	□□□	□□□□□□□□ □□□□□
PA1DDF6R10000	ESPAS 30 P ULTRA PLN M B H R CC POL RF	●	●			●	●	●	●	●	●
PA1DDF6R11000	ESPAS 30 P ULTRA PLN M B H R CC POL RF CIT BUS	●	●		●	●	●	●	●	●	●
PA1DDF6R12000	ESPAS 30 P ULTRA PLN M B H R CC POL RF CIT IP	●	●	●		●	●	●	●	●	●
PA1D510R10000	ESPAS 30 P ULTRA GBP M RF	●	●					●			●
PA1D5A0R10000	ESPAS 30 P ULTRA GBP B R RF	●	●			●			●		●
PA1D5F0R10000	ESPAS 30 P ULTRA GBP M B H R RF	●	●			●	●	●	●		●
PA1D5F0R11000	ESPAS 30 P ULTRA GBP M B H R RF CIT BUS	●	●		●	●	●	●	●		●
PA1D5F0R12000	ESPAS 30 P ULTRA GBP M B H R RF CIT IP	●	●	●		●	●	●	●		●
PA1D5F3R10000	ESPAS 30 P ULTRA GBP M B H R CC UK RF	●	●			●	●	●	●	●	●
PA1D5F3R11000	ESPAS 30 P ULTRA GBP M B H R CC UK RF CIT BUS	●	●		●	●	●	●	●	●	●
PA1D5F3R12000	ESPAS 30 P ULTRA GBP M B H R CC UK RF CIT IP	●	●	●		●	●	●	●	●	●
PA1D310R10000	ESPAS 30 P ULTRA AED M RF	●	●					●			●
PA1D3A0R10000	ESPAS 30 P ULTRA AED B R RF	●	●			●			●		●
PA1D3F0R10000	ESPAS 30 P ULTRA AED M B H R RF	●	●			●	●	●	●		●
PA1D3F0R11000	ESPAS 30 P ULTRA AED M B H R RF CIT BUS	●	●		●	●	●	●	●		●
PA1D3F0R12000	ESPAS 30 P ULTRA AED M B H R RF CIT IP	●	●	●		●	●	●	●		●
PA1DC10R10000	ESPAS 30 P ULTRA MXN M RF	●	●					●			●
PA1DCA0R10000	ESPAS 30 P ULTRA MXN B R RF	●	●			●			●		●
PA1DCF0R10000	ESPAS 30 P ULTRA MXN M B H R RF	●	●			●	●	●	●		●
PA1DCF0R11000	ESPAS 30 P ULTRA MXN M B H R RF CIT BUS	●	●		●	●	●	●	●		●
PA1DCF0R12000	ESPAS 30 P ULTRA MXN M B H R RF CIT IP	●	●	●		●	●	●	●		●





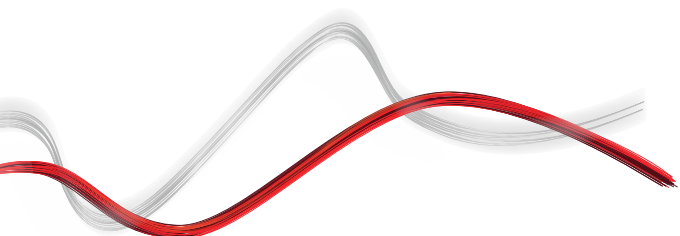
# ESPAS 30 P ULTRA



## ESPAS 30 ULTRA

### 推荐的配件

	<b>Cp</b> P118005 <b>Ci</b> 2606770 <b>ADD ON SERVICES</b>		<b>Cp</b> D121711 <b>Ci</b> 2605801 <b>HEATER UNIT</b>
	Espas 30 Ultra 软件模块用于零售筛选服务或做次进入斋留区、厕所等。		60W 加碌装置用于 DIN 杆上的内部车槽/POF 装置





INFORMATION REGARDING THE PROTECTION OF THE INDUSTRIAL AND INTELLECTUAL PROPERTY RIGHTS OF BFT. BFT S.p.A. protects its industrial property by depositing trademarks, patents, models and designs. The intellectual property of BFT S.p.A. is protected by copyright law. BFT S.p.A. also protects its know how by taking measures to protect the technical and commercial information inherent in its company and products. All the products in this catalogue are ORIGINAL BFT MODELS and only BFT S.p.A. is authorised to produce them and market them anywhere in the world. All the commercial names in this catalogue are owned by BFT S.p.A., and only BFT S.p.A. is authorised to use them in relation to the corresponding merchandise category. FALSIFIERS WILL BE PROCEEDED AGAINST IN ACCORDANCE WITH BOTH CIVIL AND CRIMINAL LAW. THESE CONDITIONS NOT ONLY GUARANTEE THE INTELLECTUAL PROPERTY RIGHTS OF BFT, BUT ALSO PROTECT CUSTOMERS BY GUARANTEEING THAT THE PRODUCTS THEY ARE PURCHASING ARE ORIGINAL BFT PRODUCTS RESULTING FROM STUDIES AND DESIGNS WITHIN THE BFT COMPANY.