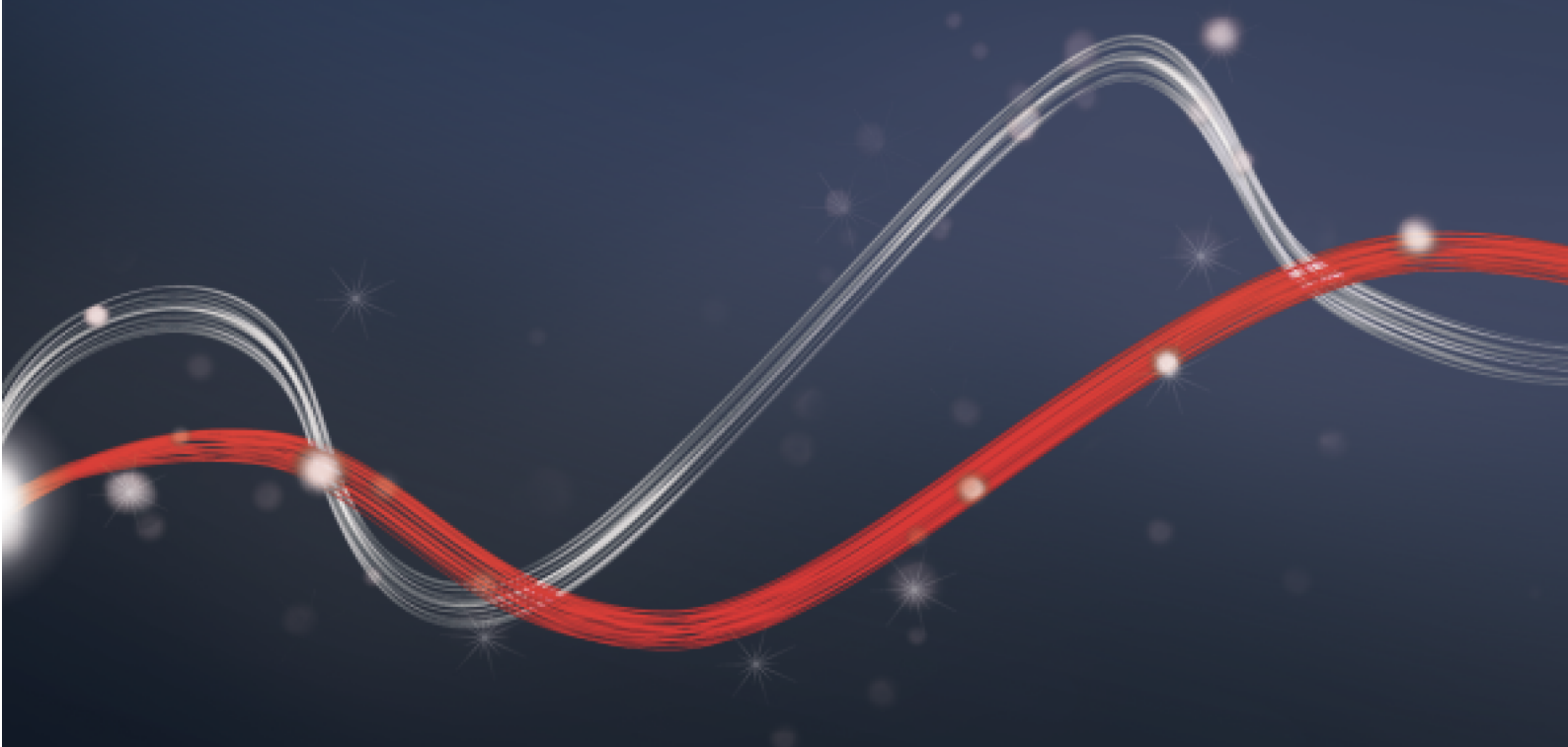




Be ahead



# BOTTICELLI SMART BT A





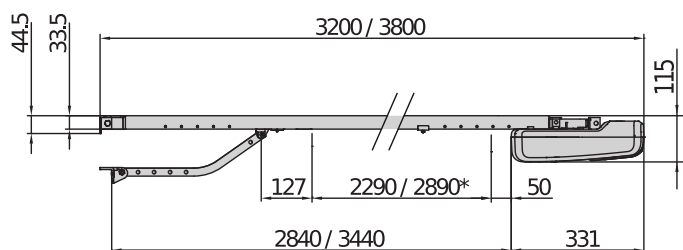
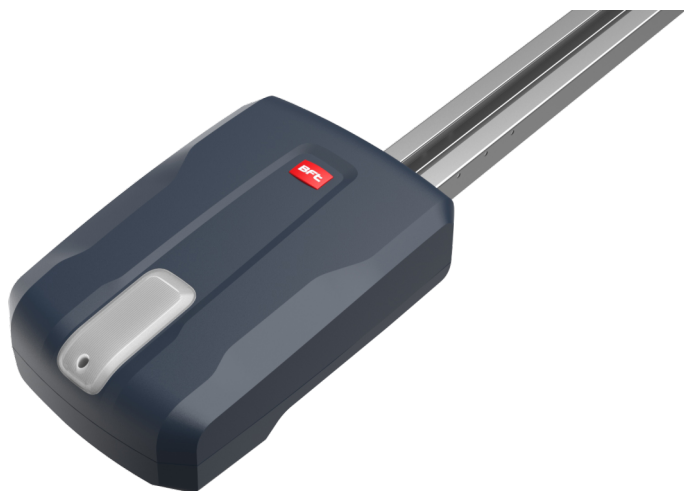
# BOTTICELLI SMART BT A



## Automation systems for garage doors



Empowered by  
**U-LINK**



Electromechanical operators for intensive/very intensive use, designed for the automation of sectional garage doors. Features a very compact design, suitable for installation in any situation, thanks to the wide range of chain rails available in various lengths. The control unit and limit switch with encoder with mechanical stop are incorporated in the operator and rail respectively. The intensity of use makes them suitable for any type of installation, both residential and municipal. The quick Set-Up function from the ground makes installation fast and easy. The high opening speed minimises waiting times and maximises comfort for the end user. The exclusive anti-intruder function (SMART models) secures the garage from unwanted accesses.

### Relevant features



**Fast and powerful motors:** fast opening to minimise waiting times and intensive use of the automation for all types of application



**Improved fast mechanical installation:** by even just one person thanks to the new rapid Autoset procedure.



**Encoder and exclusive D-Track force management system:** for safe installation in all conditions.



## Automation systems for garage doors



Empowered by  
**U-LINK**

### VENERE BT A ETD: Control unit with electronic trimmer-dip switch for 1 x 24 V operator for garage doors

#### VENERE BT A ETD - Built-in



- Control unit with electronic trimmer-dip switch for 1 x 24 V operator for garage doors
- Board power supply: 230V single-phase
- Power supply to motor and accessories: 24 V
- Main features: integrated two-channel receiver, D-Track anti-crushing system, soft opening and closing
- Main functions: automatic re-closing, automatic torque control
- Programming with electronic trimmer-dip switch (shown on display)

### VENERE BT A DIS: Control unit with display for 1 x 24 V operator for garage doors

#### VENERE BT A DIS - Built-in



- Control unit with display for 1 x 24 V operator for garage doors
- Panel power supply: 230 V, single-phase
- Power supply to motor and accessories: 24 V
- Main features: built-in four-channel receiver, D-Track anti-crushing system, soft opening and closing
- Main functions: automatic re-closing, automatic torque control
- Programming with display
- U-Link protocol
- Exclusive anti-intruder function.



## RECOMMENDED ACCESSORIES

	<b>N733391 - PBE</b> Complete kit for extending the useful travel of the BOTTICELLI and EOS 120 chain rails by 1 m.		<b>N999060 - APT</b> Assembly for fitting BOTTICELLI, EOS 120 at over 30 cm from the ceiling
	<b>N999370 - TA BIN</b> Vibration damper plugs for EOS120 and BOTTICELLI, (pack of 4 plugs)		<b>P115005 - SM1</b> External manual release for overhead garage door (1 operator)
	<b>N733069 - SET/S</b> External release for insulated sectional and overhead doors of thickness up to 50 mm.		<b>P115003 - ST</b> Automatic bolt release for sectional doors
	<b>P115029 - BRTS</b> Triangular slide arm for overhead doors For BOTTICELLI SMART BT A 850-1250, BOTTICELLI B CRC 480, EOS 120, BOTTICELLI 800 U and EOS 120 U operators.		<b>P125005 - BT BAT</b> Kit batterie di emergenza per HYDRA N, ARGO, VENERE BT A DIS
	<b>D114093 00003 - RADIUS LED BT A R1</b> Flashing light with incorporated antenna for motors with 24 V power supply.		<b>D114094 00003 - RADIUS LED BT A R0</b> Flashing light without incorporated antenna for motors with 24 V power supply.
	<b>D114168 00003 - RADIUS LED BT A R1 W</b> Flashing light with incorporated antenna for motors with 24 V power supply. White flashing light.		



Automation systems for garage doors



Empowered by  
**U-LINK**

## What is U-Link?

The technology that gives you more power

U-Link, Universal Link, is an exclusive BFT platform that can be used to create high-tech ecosystems.

In Home Access Automation, it can be used to communicate with all home access automation devices of any brand. This saves you time and allows you to control everything easily and without any worries.

### It is intuitive

Easy to install and to use

### It is scalable

You can add as many devices as you want

### It is flexible

It allows you to create groups of interconnected products

### It is practical

Works with or without an internet connection

### It is functional

Its settings can be controlled remotely using dedicated applications



## Automation systems for garage doors



## Everything on one screen: find out more about this amazing technology

A world-exclusive platform that **can be used to create high-tech ecosystems** offering a vast range of solutions for many different sectors.

This proprietary platform which is a key feature of BFT products, thanks to the B-EBA cards and the Clonix U-Link receiver, is suitable for any protocol or product for access automation (including BFT products non-BFT ones and older versions) and it can be used in a variety of different sectors. This means any device becomes a smart device which can be interconnected with other systems, using a language that is becoming universal.



### U-Control HOME

U-Control HOME is the application that allows you to open the gate to your home and to remotely control BFT automations using your own smartphone. The iOS version can be used to automatically open the automation when you are close to it.



### U-Base 2

A software package for installation, performing maintenance and identifying any faults in the U-Link compatible operators, easily and conveniently.



### U-SDK

U-SDK is the application which allows BFT automations to be made compatible and easily integrated with a BMS network.



### Clonix U-Link

Connect non-native U-Link and non-BFT products to U-Link systems.

Is it possible to connect non-native U-Link BFT operators or other brands of products to U-Link? Yes, thanks to the Clonix receivers. Accessories which accept no limits.



### B-EBA

A direct link to your operators.

The B-EBA expansion cards make it possible to connect external devices such as PCs, smartphones and tablets to a BFT operator and a Clonix receiver or to connect multiple BFT products in a U-Link network. These accessories integrate with U-Link technology and with Bluetooth, Wifi, Z-Wave and TCP/IP protocols as well as with the RS485 serial interface. A device that demonstrates exactly what BFT means by interconnectivity.

