

Be  
ahead

# ELI AC/BT A

Sales Pitch



Be ahead

# Eli BT A: inground electrom. swinging motor

What  
to know



		CURRENT RANGE	2020 RANGE	
		ELI 250 BT	ELI BT A35 V	ELI BT A40
Motor Power	V	24	24 <b>NEW</b>	24
Compatible control board		Thalia L, Thalia P	Thalia L (V3.21.0), Thalia P (V6.21.0)	
Max leaf weight	Kg	400	200	500
Max leaf lenght	m	4	3,5	4
Max leaf lenght wo electriclock	m	2,5	2	2,5
Mechanical stops		Op+Cl	Op+Cl	Op+Cl
Limit Switches	Standard	Magnetic	Relative Encoder	
	Optional		Magnetic as Optional Item	
Speed	rpm	1,45	2,5	1,45



24 V



d-track



U-Link



# Eli BT A: inground electrom. swinging motor

What  
to know



		CURRENT RANGE		2020 RANGE	
		ELI 250 NV	ELI 250 N	ELI AC A35 V	ELI AC A40
Motor Power	V	230		230	
Compatible control board		Rigel 6, Alena SW2		Rigel 6, Alena SW2	
Max leaf weight	Kg	150	300	200	500
Max leaf lenght	m	2	3,5	3,5	4
Max leaf lenght wo electriclock	m	2	2,5	2	2,5
Mechanical stops		Op+Cl		Op+Cl	
Limit Switches		N.A.		Magnetic as Optional Item	
Speed	rpm	2,2	1,1	2	1,1



ac



d-track



U-Link



# Product up-grading

What  
to know

WHAT

REVISED  
SECONDARY ARM

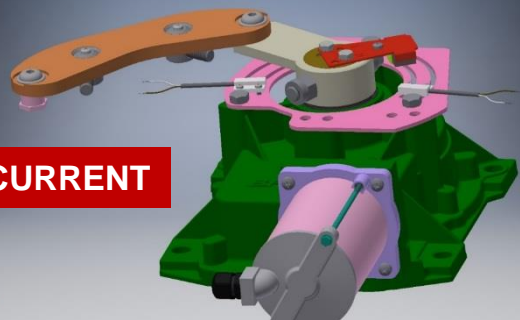
GOAL

- EASIER/FASTER INSTALLATION
- EASIER/FASTER MECH.STOPS ADJUSTMENT
- **MORE SECURE ARM FIXING**

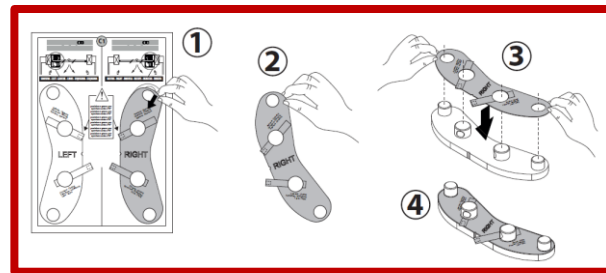
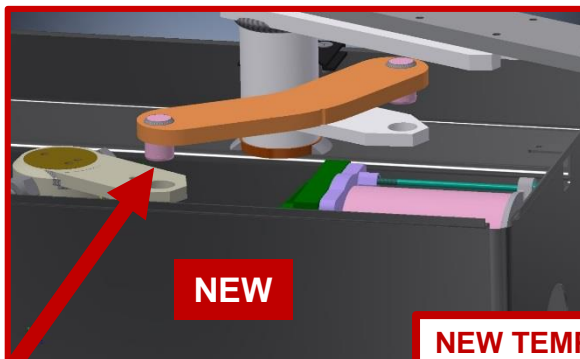
BENEFIT

EASY TO  
INSTALL  
RELIABILITY IN USE

CURRENT



NEW



**NEW TEMPLATE TO BE STUCK TO SECONDARY ARM  
TO HELP MECHANICAL STOP 90° PRE-ADJUSTMENT**

- EASIER TO FIX - **MORE SECURE (NO THREAD – NO BOLT)**

# Product up-grading

What  
to know

WHAT

GOAL

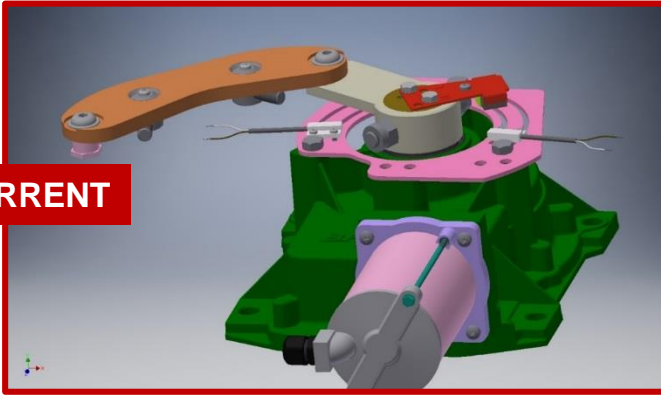
BENEFIT

REV. LIMIT  
SWITCHES (BT)

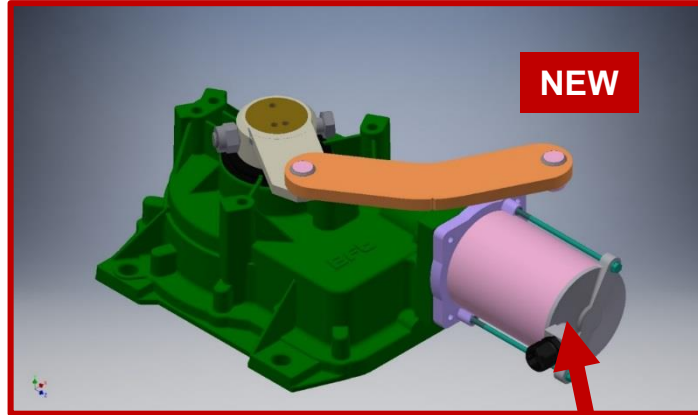
- EASIER/FASTER INSTALLATION

FASTER TO INSTALL

CURRENT



NEW



OPTIONAL ACCESSORY

RELATIVE MAGNETIC ENCODER ON THE MOTOR

# Product up-grading

What  
to know

## WHAT

**REV. GEAR BOX  
(BT A40/AC A40)**

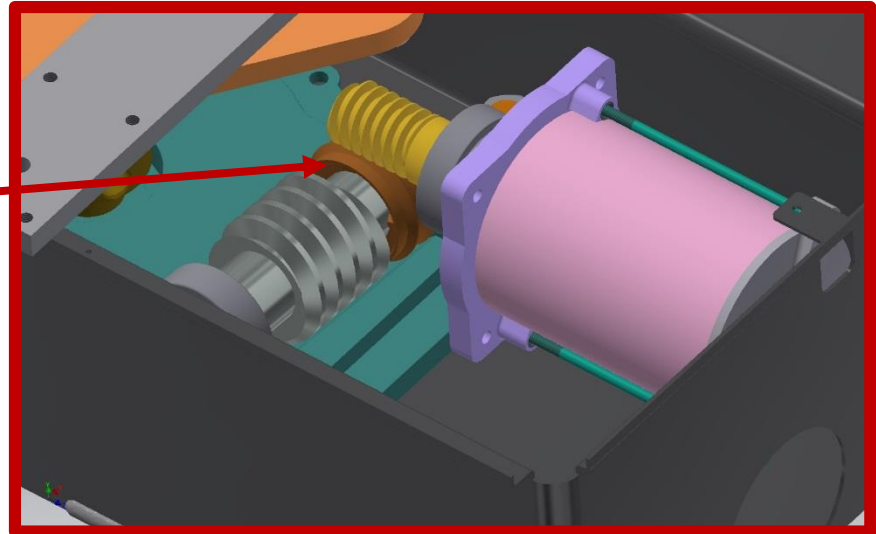
## GOAL

- UP-GRADED GATE MAX WEIGHT
- STURDIER OPERATOR

## BENEFIT

UP-GRADED PERFORMANCE

**NEW XECARB® COMPOUND CROWN:** fiber carbon reinforced family of polymers, widely used in sporting goods and aerospace fields.



# Thalia for Eli BT A compatibility + accessories

What  
to know



**ELI BT A  
COMPATIBLE**

- **Thalia L V3.21.0**
- It manages 12-24V electric-lock directly, no need to add ME BT control board
- Same item reference
- External sticker on the Box
- Phase-in: approx 2,5 months in advance to the new BT motors



**ELI BT A  
COMPATIBLE**






- **Thalia P V6.21.0**
- Same item reference
- External sticker on the Box
- Phase-in: approx 1 month later than the new BT motors

N733951	<b>FCEBT</b>	<b>Magnetic limit switches for BT models</b>	<b>NEW</b>
N733397	BTCF 120 E	Fondation box with levers	
N733398	BTCF 120 E INOX	Stainless steel fondation box with levers	
N733392	SCC	Release with lever key	
N733502	SCP	Release with personal key	
N733304	E180	Accessory for 180° opening <b>AC+BT model</b>	<b>NEW</b>







# Competitors benchmarking: AC range

What  
to know

	 Be ahead								
	ELI BT A 35 V	ELI BT A 40	M-FAB 3024	MFAB HS	L-FAB 4024	L-FAB HS	FROG A 24E	DU.IT24NVE	770N 24
Max leaf weight	200	500	600	300	650	400		300	500
Max leaf length	3,5	4	3,5	3	4	4	3,5	3,5	3,5
Max leaf length without electric-lo	2	2,5	2,5	2,5	2,5	2,5	2,5		2
Max Torque	200	350	250	180	300	200	320	280	330
Max speed (rpm)	2,5	1,45	1,4	2,6	1	2,4			
Time to open 90° (with slow down)	10"	14"							
Cycles/h - Type of use	50	Continuos	76	80	60	50			
Intensity of use	Intensive	Continuos					Intensive	Intensive	Continuos
Encoder limit switches	YES		YES				YES	YES	Optional
Max opening angle	120°		110°				110°		
Integrated mechanical stops	OP+CL		OP+CL				CL	OP+CL	Optional

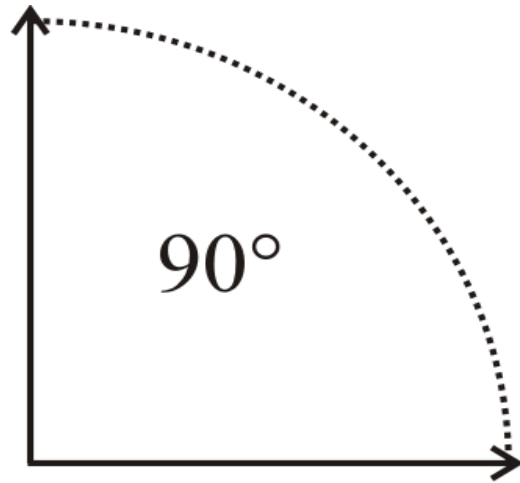
# Competitors benchmarking: BT range

What  
to know

	 Be ahead					 TECHNOLOGY TO OPEN	
	ELI AC A 35 V	ELI AC A 40	FROG A	FROG AE	FROG AE	DU.IT14N	770N 230V
Max leaf weight	200	500	800	800	300		500
Max leaf length	3,5	4	3,5	3,5	1,3	3,5	3,5
Max leaf length without electric-lo	2	2,5	2,5	2,5			2
Max Torque	250	350	320	320	240	370	330
Max speed (rpm)	2,2	1,1					
Time to open 90° (no slow down)	11"	13"			9"		
Cycles/h - Type of use	40	20					
Intensity of use	Intensive	Semi-int.	30%	30%		30%	30%
Limit switches	Magnetic-opt.	Magnetic-opt.		Encoder			Encoder - Opt.
Max opening angle	120°		110°				110°
Integrated mechanical stops	OP+CL		CL			OP+CL	Optional

# Product Plus: «V» models

What  
to say



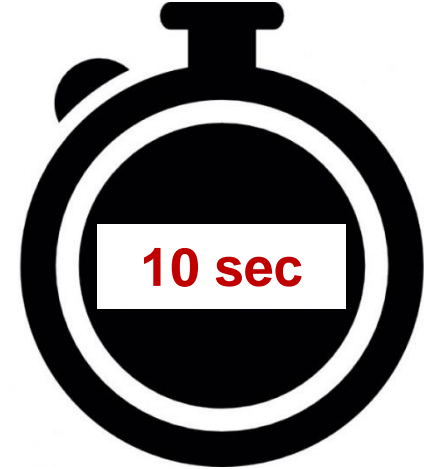
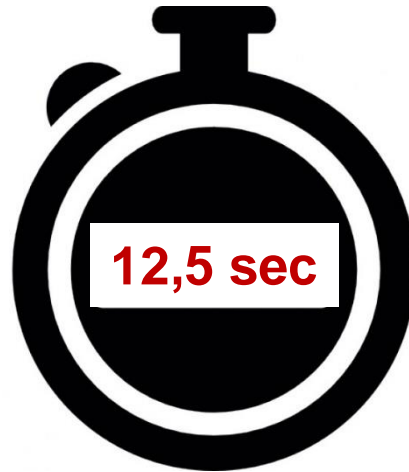
Time to open 90°

**ELI AC A35 V**

**ELI BT A35 V**

2,2 rpm

2,5 rpm



**ELI AC A35 V**

**ELI BT A35 V**

\*\* With slow-down

\*\* With «short» slow-down

# Benefits

How  
to say it



**A** Reduced *waiting time*



**B** Fast opening to quickly clear-out hi-traffic & dangerous roads to get into private property

SAFETY



**C** Fast closing to secure private property from intrusions



# Product Plus: AC40/BT40 models

What  
to say

## UP-GRADED PERFORMANCE

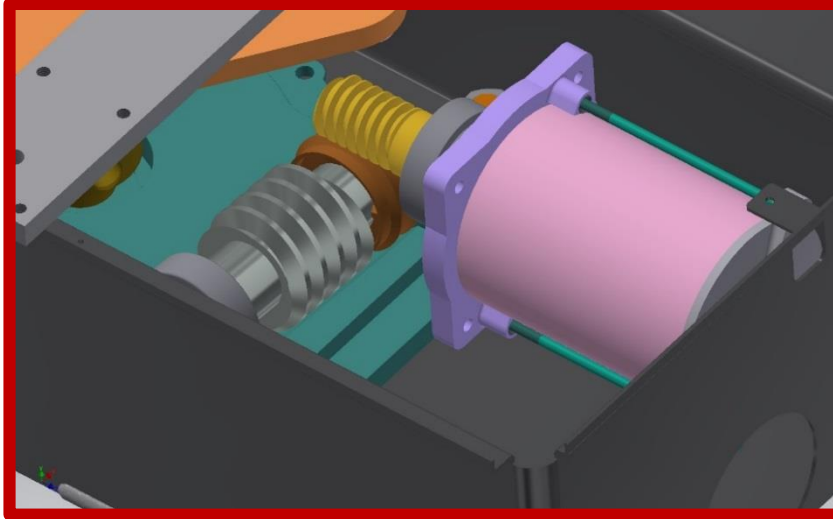


ac

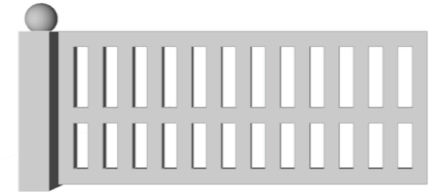


24 V

**NEW XECARB® COMPOUND CROWN:** fiber carbon reinforced family of polymers, widely used in sporting goods and aerospace fields.

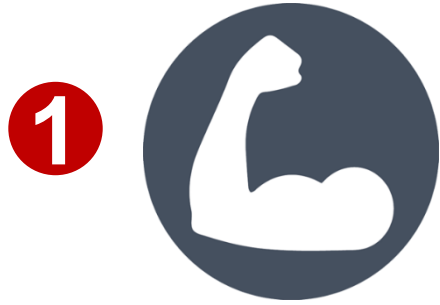


**Up to 500 kg !**



# Benefits

How  
to say it



Higher limits to heavy gates

2

**RELIABLE**

Less concerns about  
mechanical wear

3

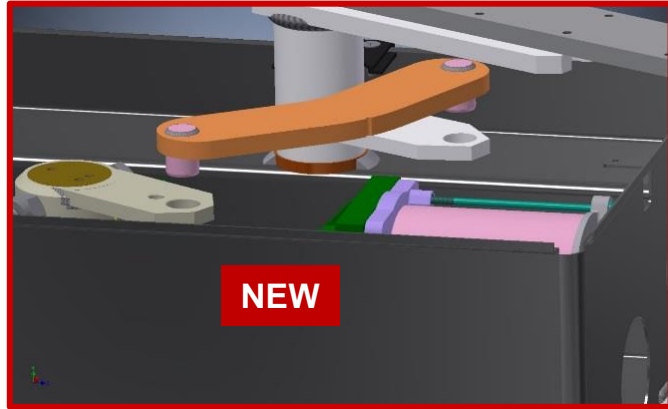


Longer life-span

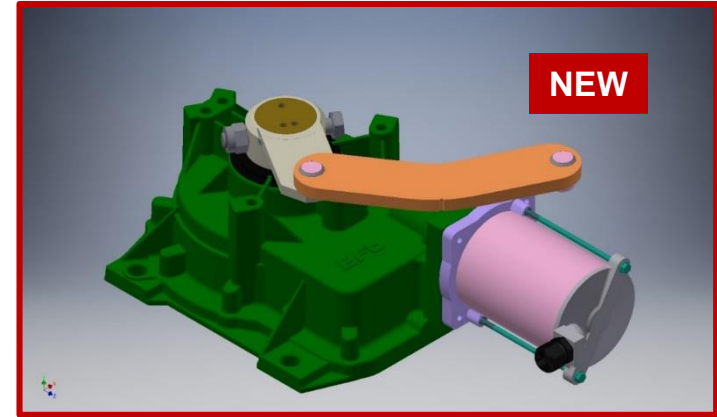
DURABLE

# Product Plus: new primary arm + encoder (BT mode)

What  
to say





- EASIER TO FIX - **MORE SECURE (NO THREAD – NO BOLT)**



**BT MODELS: RELATIVE MAGNETIC ENCODER ON THE MOTOR**

# Benefits

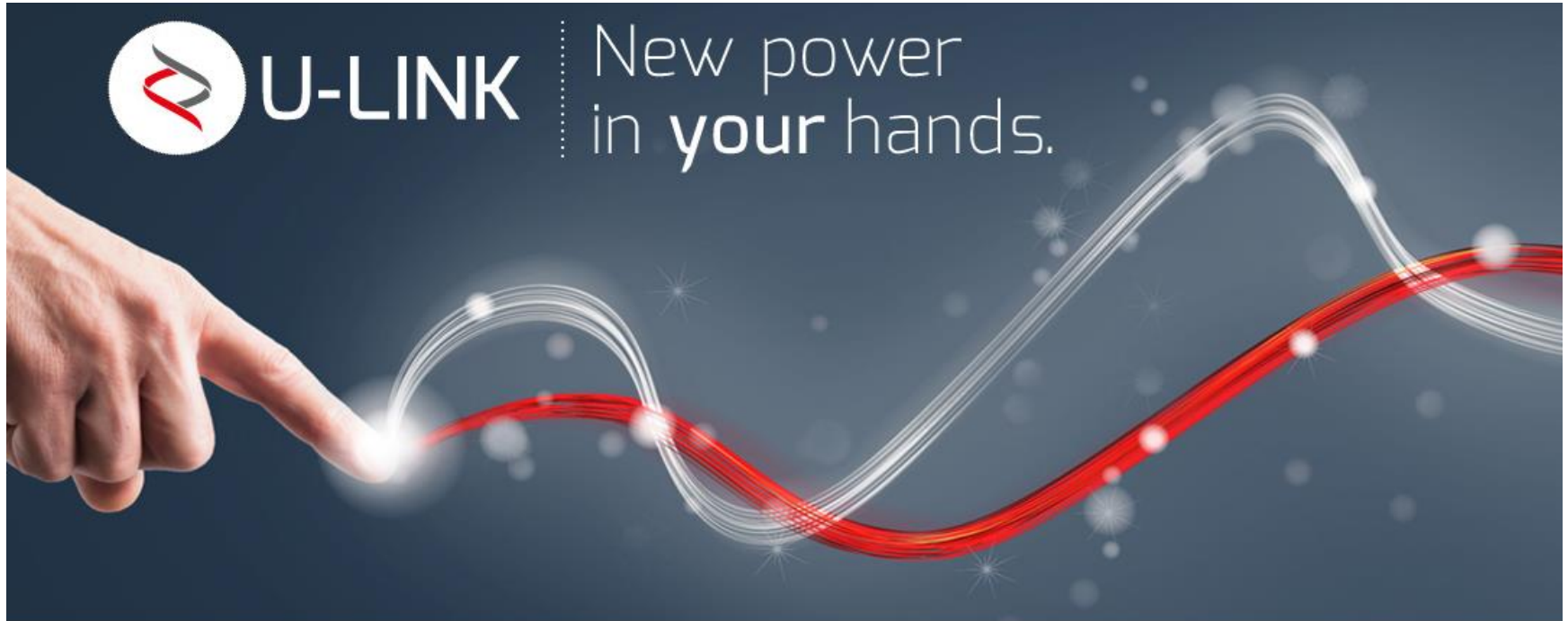
How  
to say it

- A Reduced *installing time*, thanks to the new easy to fix arm
- B  primary arm fixing,  installation
- C BT models - no need to adjust limit switches: reduced *installing time*



# Product Plus: interconnettività

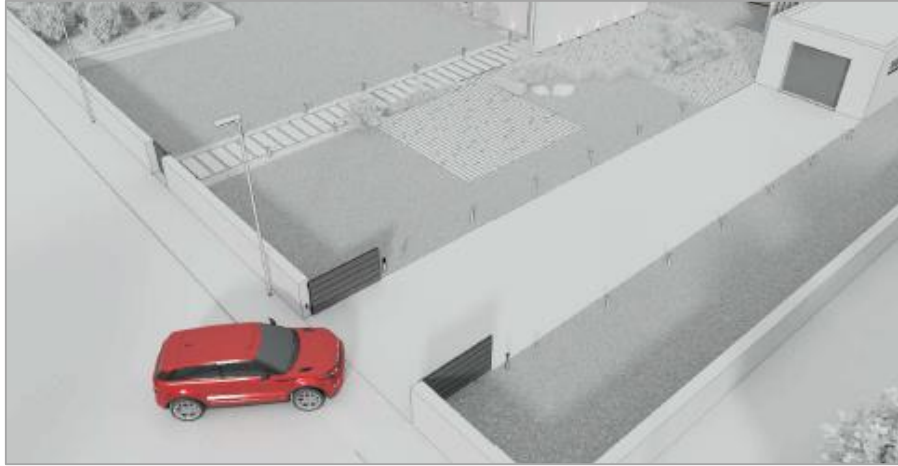
What  
to say



# Benefits

How  
to say it

## Comfort and remote management



### ***Eli BT/AC A + Thalia/Rigel + U-control:***

*“By U-Control app the user can arrive to the front of the gate open so that he doesn’t need searching for the remote controller to open the door!”*



Thank you  
for your time and attention.

# Thank you

for your time and attention.

© 2019, Bft Spa – All rights reserved.

This document is protected by copyright.

No part of many be modified, reproduced or distributed in any form by any means without prior written authorizazion of Bft Spa.

**Bft** / A BRAND OF **SOMFY** GROUP

Be  
ahead

# Grazie

della vostra attenzione.

# Grazie

della vostra attenzione.

© 2019, Bft Spa – All rights reserved.

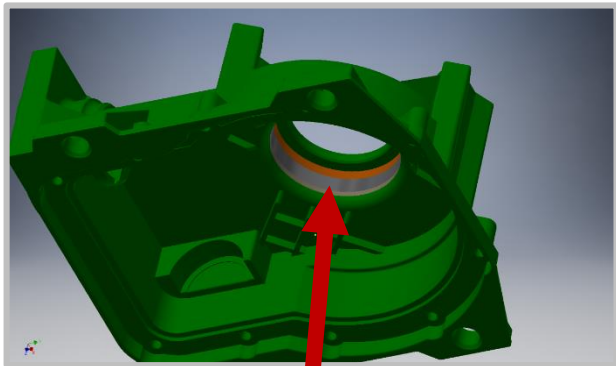
This document is protected by copyright.

No part of many be modified, reproduced or distributed in any form by any means without prior written authorizazion of Bft Spa.

**Bft** / A BRAND OF **SOMFY** GROUP

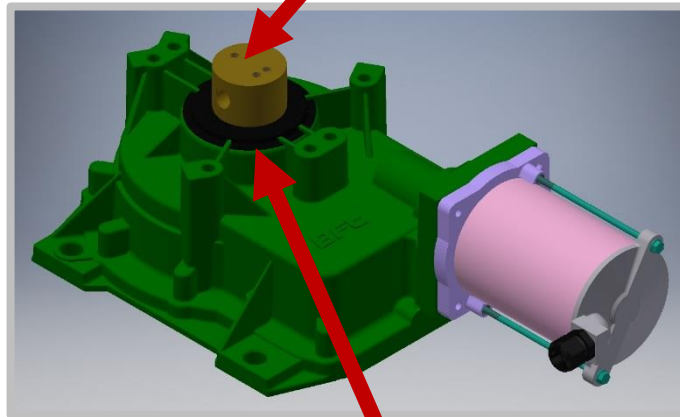
# Product up-grading: IP67 improvements

In order to grant IP67 in every installing condition:



- **SHAFT BEARINGS SEAT:** modified to better block the bearings
- **Production started since end 2018**

- **TRANSMISSION SHAFT:** shaft treated with a **water-repellent teflon grease** to prevent the wear of the gasket ensuring lifespan
- **Production started from Q1 2019**



- **NEW TECHNO-POLYMER COLLAR** to prevent dust from wearing the shaft
- **Production started from Q1 2019**

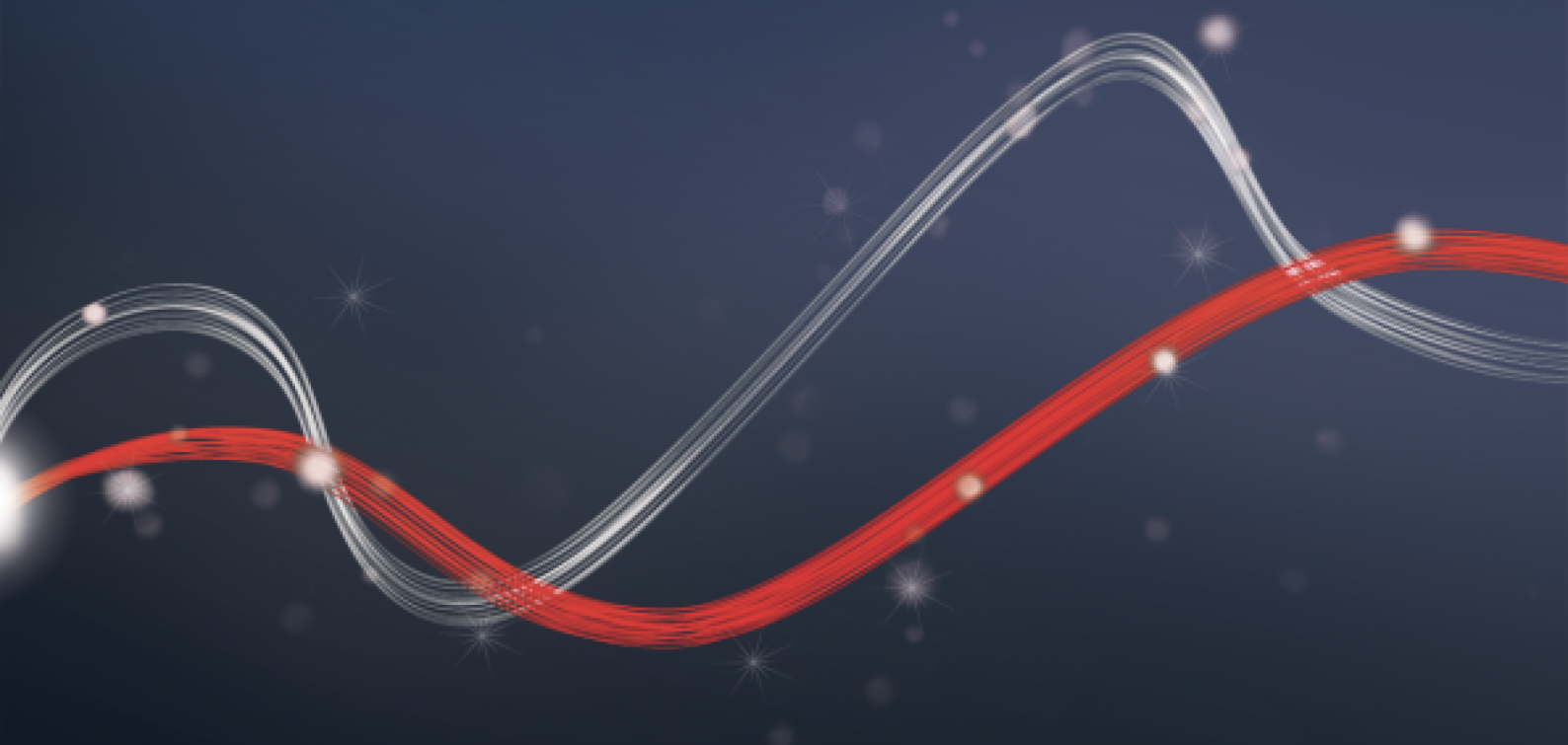




Be ahead

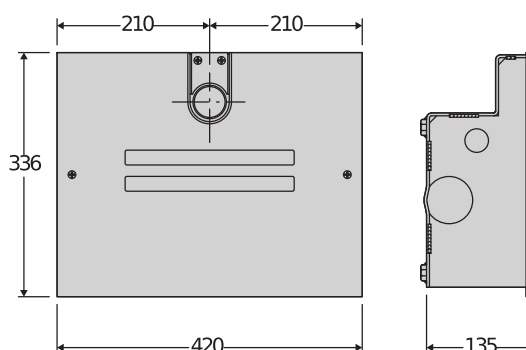
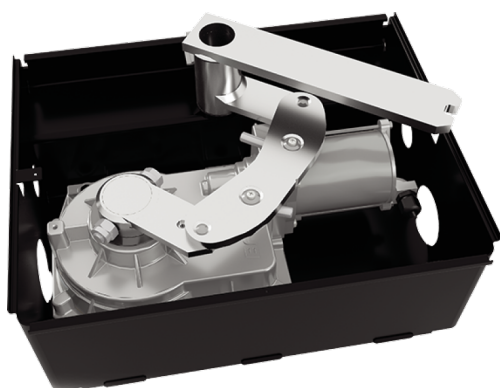


# ELI AC A





## Electromechanical automation systems for swing gates



ee link



er ready



U-Link



d-track

A complete range of in-ground non-reversible electromechanical operators for swing gates weighing up to 500 Kg and up to 4m long with 230V motors.

The integrated mechanical stops for both opening and closing, allowing the option of a simple installation by reducing the need for physical stops. The magnetic limit switch system (optional) ensures the highest levels of accuracy and reliability over time in all weather conditions.

### PLUS



**Super fast AC35 motors:** Maximum comfort. Fast opening is ideal for sites which require reduced waiting times meaning you can quickly clear busy or hazardous roads. Fast closing can help to improve security keeping the property safer from intruders.



**New secondary arm:** quicker and more secure attachment to the primary shaft, for a more reliable installation!



**New composite crown XECARB (AC A 40):** developed with carbon fiber reinforced polymers, widely used also in sports and air-space, it allows the use on heavier gates and longer life.



**Integrated mechanical stops:** for both opening and closing, allowing the option of a simple installation by reducing the need for physical stops.





## Electromechanical automation systems for swing gates

### ELI AC A

Code	Name		Description
P930131 00002	ELI AC A35 VELOCE		230 V electromechanical in-ground operator for swing gates weighing up to 200 kg and up to 3.5 m long.
P930132 00002	ELI AC A40		230 V electromechanical in-ground operator for swing gates weighing up to 500 kg and up to 4 m long.

#### RIGEL 6 220-230V 50/60HZ: Universal control panel with display for one or two 230V - 650+650W operators



##### D113833 00002 - RIGEL 6 220-230V 50/60HZ - Recommended


















- Universal control panel with display for one or two 230V - 650+650W operators
- Application: universal control panel for one or two operators
- Card power supply: 230 V single-phase
- Operators power supply: 230V single-phase 600+600W
- Main features: removable terminal blocks, programming and diagnostics with display, built-in four-channel receiver, electro lock, electronic torque limiter, electronic deceleration at opening and closing, a separate limit switch inputs for each motor, traffic light management, preheating hydraulic operators, weekly timer, possibility to delete a specific remote control, customization of the 4 radio channels, personalization of the duration of the delayed output, adjustable sensitivity to the obstacle.
- Main functions: automatic re-closing, separate motor working times, stays locked when closed, water hammer, 2/3/4 step logic, partial opening, fast closing, separate opening and closing
- Compatibility: RIGEL 5 - RIGEL 4 - RIGEL 3 - RIGEL N

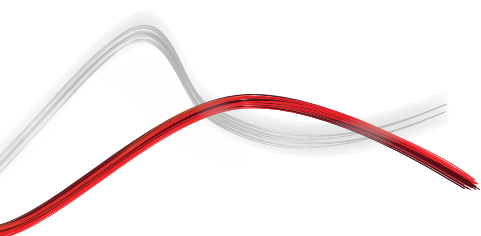
	ELI AC A35 VELOCE	ELI AC A40
Motor voltage	230 V	230 V
Compatible control unit	RIGEL6, ALENA SW2	RIGEL6, ALENA SW2
Max. weight of door/gate wing	200 kg	500 kg
Max. width of door/gate wing	3,50 m	4 m
Max. length gate panel without electric lock	2 m	2,50 m
Max. motor torque	200 Nm	350 Nm
Max. opening cycles per hour	40	20
Maximum angle	120 °	120 °
Speed	2,50 Rpm	1,45 Rpm
Opening time to 90°	11" (no slowdown)	13" (no slowdown)
Limit switch standard	N/A	N/A
Limit switch optional	Magnetic	Magnetic
Mechanical stops	OP+CL	OP+CL
Release	Lever or lever with personalised key	Lever or lever with personalised key
Impact reaction	Electronic clutch (with control panel)	Electronic clutch (with control panel)
Protection rating	IP67	IP67
Environmental conditions	-20 ÷ 55 °C	-20 ÷ 55 °C



## Electromechanical automation systems for swing gates

### RECOMMENDED ACCESSORIES

	N733397 - <b>BTCF 120 E</b> Foundation box with levers for ELI AC A, ELI BT A. Release not supplied		N733398 - <b>BTCF 120 E INOX</b> Stainless steel foundation box with levers for ELI AC A, ELI BT A. Release not provided
	N733392 - <b>SCC</b> Release for ELI AC A, ELI BT A and SUB BT with lever key.		N733502 - <b>SCP</b> Release for ELI AC A, ELI BT A and SUB BT with personalized key.
	N733304 - <b>E180</b> Accessory for opening to 180° for ELI AC A, ELI BT A operator		 N733951 - <b>FCEBT</b> Magnetic limit switches for BT and AC models.
	 P111782 - <b>COMPACTA A20-180</b> Pair of photocells adjustable 180° horizontally. Range 20m. Power supply 12 – 33Vac / 15 – 35Vdc		 R400009 - <b>KIT COMPACTA - PHP</b> Kit complete with a pair of aluminum posts for photocells height 522mm and a pair of Compacta A20-180 photocells adjustable 180° horizontally, range 20m, power supply 12 – 33Vac / 15 – 35Vdc
	 D114094 00002 - <b>RADIUS LED AC A R0</b> Flashing light without incorporated antenna for motors with power supply 230 V.		 D114093 00002 - <b>RADIUS LED AC A R1</b> Flashing light with incorporated antenna for motors with power supply 230 V.





## Electromechanical automation systems for swing gates

# What is U-Link?

The technology that gives you more power

U-Link, Universal Link, is an exclusive BFT platform that can be used to create high-tech ecosystems.

In Home Access Automation, it can be used to communicate with all home access automation devices of any brand. This saves you time and allows you to control everything easily and without any worries.

### It is intuitive

Easy to install and to use

### It is scalable

You can add as many devices as you want

### It is flexible

It allows you to create groups of interconnected products

### It is practical

Works with or without an internet connection

### It is functional

Its settings can be controlled remotely using dedicated applications



## Electromechanical automation systems for swing gates

# Everything on one screen: find out more about this amazing technology

A world-exclusive platform that **can be used to create high-tech ecosystems** offering a vast range of solutions for many different sectors.

This proprietary platform which is a key feature of BFT products, thanks to the B-EBA cards and the Clonix U-Link receiver, is suitable for any protocol or product for access automation (including BFT products non-BFT ones and older versions) and it can be used in a variety of different sectors. This means any device becomes a smart device which can be interconnected with other systems, using a language that is becoming universal.



### U-Control HOME

U-Control HOME is the application that allows you to open the gate to your home and to remotely control BFT automations using your own smartphone. The iOS version can be used to automatically open the automation when you are close to it.



### U-Base 2

A software package for installation, performing maintenance and identifying any faults in the U-Link compatible operators, easily and conveniently.



### U-SDK

U-SDK is the application which allows BFT automations to be made compatible and easily integrated with a BMS network.



### Clonix U-Link

Connect non-native U-Link and non-BFT products to U-Link systems.

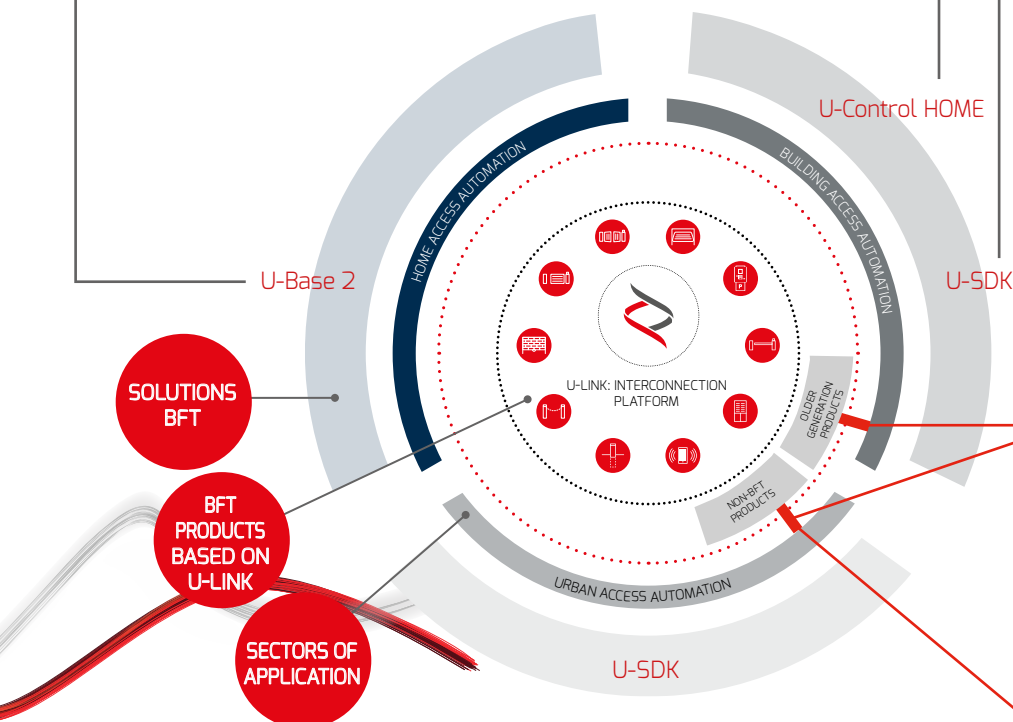
Is it possible to connect non-native U-Link BFT operators or other brands of products to U-Link? Yes, thanks to the Clonix receivers. Accessories which accept no limits.



### B-EBA

A direct link to your operators.

The B-EBA expansion cards make it possible to connect external devices such as PCs, smartphones and tablets to a BFT operator and a Clonix receiver or to connect multiple BFT products in a U-Link network. These accessories integrate with U-Link technology and with Bluetooth, Wifi, Z-Wave and TCP/IP protocols as well as with the RS485 serial interface. A device that demonstrates exactly what BFT means by interconnectivity.





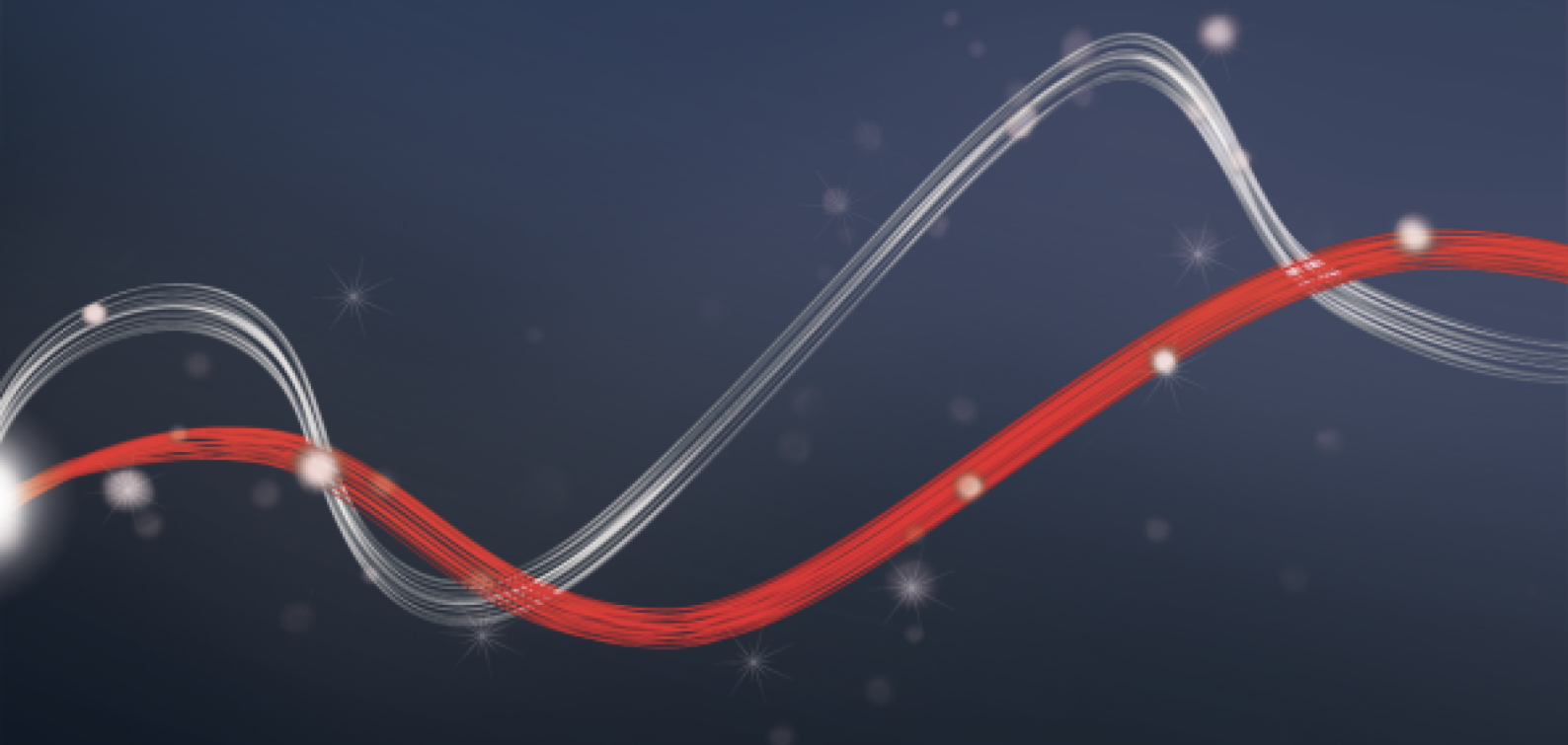




Be ahead



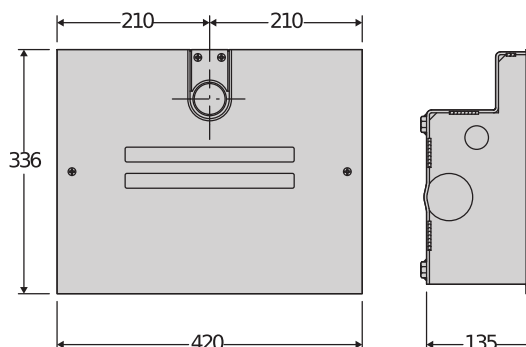
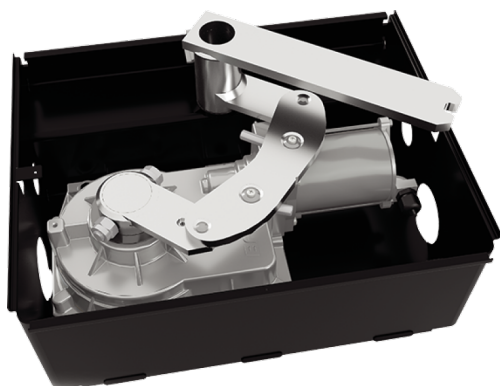
# ELI BT A







## Electromechanical automation systems for swing gates



ee link



er ready



U-Link



d-track

A complete range of in-ground non-reversible electromechanical operators for swing gates weighing up to 500 Kg and up to 4m long with 24V technology.

The integrated mechanical stops for both opening and closing, allowing the option of a simple installation by reducing the need for physical stops. The encoder-based limit switch system offers precision and quick installation.

### PLUS

**Fast****Encoder**

**Super fast BT35 motors:** Maximum comfort. Fast opening is ideal for sites which require reduced waiting times meaning you can quickly clear busy or hazardous roads. Fast closing can help to improve security keeping the property safer from intruders.

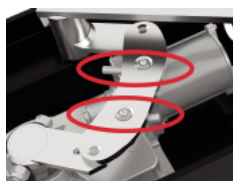
**BT motors with relative encoder:** No more need to assemble and adjust the limit switches, reducing installation time.



**New secondary arm:** quicker and more secure attachment to the primary shaft, for a more reliable installation!



**New composite crown XECARB (BT A 40):** developed with carbon fiber reinforced polymers, widely used also in sports and air-space, it allows the use on heavier gates and longer life.



**Integrated mechanical stops:** for both opening and closing, allowing the option of a simple installation by reducing the need for physical stops.



## Electromechanical automation systems for swing gates

## ELI BT A

Code	Name		Description
P930133 00002	ELI BT A35 VELOCE		24 V electromechanical in-ground operator for swing gates weighing up to 200 kg and up to 3.5 m long. Relative encoder limit switches.
P930134 00002	ELI BT A40		24 V electromechanical in-ground operator for swing gates weighing up to 500 kg and up to 4 m long. Relative encoder limit switches.

## THALIA: Control panel with display for one or two 24V electromechanical operators for swing gates



## D113745 00002 - THALIA - Recommended



- Application: control panel with display for one or two 24V electromechanical operators for swing gates
- Card power supply: 230 V single-phase
- Operators power supply: 24Vdc 180W max each operator
- Main features: new standard colour removable terminal blocks, simplified scenario-based programming with display and integrated dual-channel receiver, D-Track anti-crushing system, slowdown during opening and closing and electronic self-learning.
- Main functions: automatic re-closing, fast closing, partial opening, deadman feature
- Compatibility: LIBRA C MA, LIBRA, LIBRA R, LIBRA MA R

	ELI BT A35 VELOCE	ELI BT A40
Motor voltage	24 V	24 V
Compatible control unit	THALIA, THALIA P	THALIA, THALIA P
Max. weight of door/gate wing	200 kg	500 kg
Max. width of door/gate wing	3,50 m	4 m
Max. length gate panel without electric lock	2 m	2,50 m
Max. motor torque	250 Nm	350 Nm
Max. opening cycles per hour	50	Continuous
Maximum angle	120 °	120 °
Speed	2 Rpm	1,10 Rpm
Opening time to 90°	10" (with slowdown)	14" (with slowdown)
Limit switch standard	Relative encoder	Relative encoder
Limit switch optional	Magnetic	Magnetic
Mechanical stops	OP+CL	OP+CL
Release	Lever or lever with personalised key	Lever or lever with personalised key
Impact reaction	Electronic clutch (with control panel)	Electronic clutch (with control panel)
Protection rating	IP67	IP67
Environmental conditions	-20 ÷ 55 °C	-20 ÷ 55 °C

## RECOMMENDED ACCESSORIES

	N733397 - BTCE 120 E		N733398 - BTCE 120 E INOX
	Foundation box with levers for ELI AC A, ELI BT A. Release not supplied		Stainless steel foundation box with levers for ELI AC A, ELI BT A. Release not provided



## Electromechanical automation systems for swing gates

### RECOMMENDED ACCESSORIES

	N733392 - <b>SCC</b> Release for ELI AC A, ELI BT A and SUB BT with lever key.		N733502 - <b>SCP</b> Release for ELI AC A, ELI BT A and SUB BT with personalized key.
	N733304 - <b>E180</b> Accessory for opening to 180 ° for ELI AC A, ELI BT A operator		<b>new</b> N733951 - <b>FCEBT</b> Magnetic limit switches for BT and AC models.
	<b>new</b> P111782 - <b>COMPACTA A20-180</b> Pair of photocells adjustable 180 ° horizontally. Range 20m. Power supply 12 – 33Vac / 15 – 35Vdc		<b>new</b> R400009 - <b>KIT COMPACTA - PHP</b> Kit complete with a pair of aluminum posts for photocells height 522mm and a pair of Compacta A20-180 photocells adjustable 180° horizontally, range 20m, power supply 12 – 33Vac / 15 – 35Vdc
	<b>new</b> D114094 00003 - <b>RADIUS LED BT A R0</b> Flashing light without incorporated antenna for motors with power supply 24 V.		<b>new</b> D114168 00003 - <b>RADIUS LED BT A R1 W</b> Flashing light with built-in antenna for motors with a 24 V power supply. White flashing light.
	<b>new</b> D114093 00003 - <b>RADIUS LED BT A R1</b> Flashing light with incorporated antenna for motors with power supply 24 V.		





## Electromechanical automation systems for swing gates

# What is U-Link?

The technology that gives you more power

U-Link, Universal Link, is an exclusive BFT platform that can be used to create high-tech ecosystems.

In Home Access Automation, it can be used to communicate with all home access automation devices of any brand. This saves you time and allows you to control everything easily and without any worries.

### It is intuitive

Easy to install and to use

### It is scalable

You can add as many devices as you want

### It is flexible

It allows you to create groups of interconnected products

### It is practical

Works with or without an internet connection

### It is functional

Its settings can be controlled remotely using dedicated applications



## Electromechanical automation systems for swing gates

# Everything on one screen: find out more about this amazing technology

A world-exclusive platform that **can be used to create high-tech ecosystems** offering a vast range of solutions for many different sectors.

This proprietary platform which is a key feature of BFT products, thanks to the B-EBA cards and the Clonix U-Link receiver, is suitable for any protocol or product for access automation (including BFT products non-BFT ones and older versions) and it can be used in a variety of different sectors. This means any device becomes a smart device which can be interconnected with other systems, using a language that is becoming universal.



### U-Control HOME

U-Control HOME is the application that allows you to open the gate to your home and to remotely control BFT automations using your own smartphone. The iOS version can be used to automatically open the automation when you are close to it.



### U-Base 2

A software package for installation, performing maintenance and identifying any faults in the U-Link compatible operators, easily and conveniently.



### U-SDK

U-SDK is the application which allows BFT automations to be made compatible and easily integrated with a BMS network.



### Clonix U-Link

Connect non-native U-Link and non-BFT products to U-Link systems.

Is it possible to connect non-native U-Link BFT operators or other brands of products to U-Link? Yes, thanks to the Clonix receivers. Accessories which accept no limits.



### B-EBA

A direct link to your operators.

The B-EBA expansion cards make it possible to connect external devices such as PCs, smartphones and tablets to a BFT operator and a Clonix receiver or to connect multiple BFT products in a U-Link network. These accessories integrate with U-Link technology and with Bluetooth, Wifi, Z-Wave and TCP/IP protocols as well as with the RS485 serial interface. A device that demonstrates exactly what BFT means by interconnectivity.

