



Be ahead



QUADRO ESPAS 30

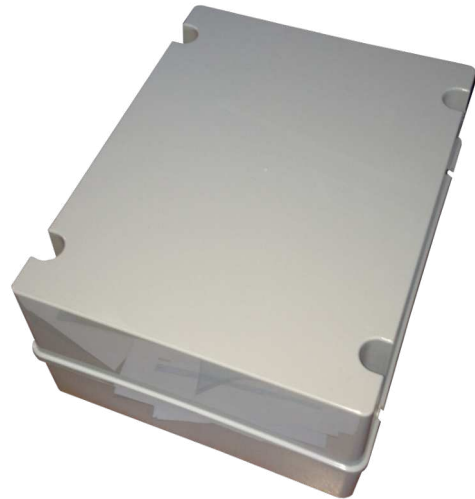




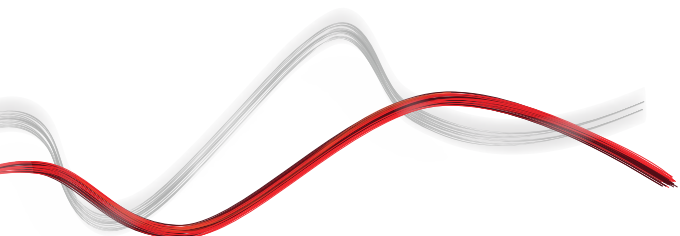
QUADRO ESPAS 30



ESPAS 30 ULTRA



Quadro Espas 30 can manage proximity cards directly on the lane or at the POS
The unit works in a wired network
as a component between the other elements of the system.
It has the main function to manage entry and exit station





QUADRO ESPAS 30






ESPAS 30 ULTRA

QUADRO ESPAS 30

Code	Ci	Name	Description
P208005E N-B	2612641	QUADRO ESPAS 30 EN	Quadro Espas 30 can be placed aside the lane or at the POS. It works linked to the network of all elements of the Parking System. All function required to manage entry and exit are included. It includes: control board with display and programming joystick, RS485 interface, loop detector. For open air environment the version E with IP66 cabinet (fiberglass UV resistant and keylock) is available.
P208005E A-B	2612640	QUADRO ESPAS 30 EA	Quadro Espas 30 with RFID 125kHz. It can be placed aside the lane or at the POS. It works linked to the network of all elements of the Parking System. All function required to manage entry and exit are included. It includes: control board with display and programming joystick, RS485 interface, loop detector. For open air environment the version E with IP66 cabinet (fiberglass UV resistant and keylock) is available.
P208005IN -B	2606061	QUADRO ESPAS 30 IN	Quadro Espas 30 can be placed aside the lane or at the POS. It works linked to the network of all elements of the Parking System. All function required to manage entry and exit are included. It includes: control board with display and programming joystick, RS485 interface, loop detector. IP56 version for in-house installation (I).
P208005IA -B	2612642	QUADRO ESPAS 30 IA	Quadro Espas 30 with RFID 125kHz. It can be placed aside the lane or at the POS. It works linked to the network of all elements of the Parking System. All function required to manage entry and exit are included. It includes: control board with display and programming joystick, RS485 interface, loop detector. IP56 version for in-house installation (I).

	QUADRO ESPAS 30 EN	QUADRO ESPAS 30 EA	QUADRO ESPAS 30 IN	QUADRO ESPAS 30 IA
Max power consumption	70 W	70 W	70 W	70 W
Operating temperature	-10 ÷ 50 °C	-10 ÷ 50 °C	-10 ÷ 50 °C	-10 ÷ 50 °C
Sizes	392 x 420 x 180 mm	392 x 420 x 180 mm	316 x 396 x 188 mm	316 x 396 x 188 mm
Standard communication interface	RS485	RS485	RS485	RS485
Supply voltage	230 VAC ±10%, 50Hz-60Hz	230 VAC ±10%, 50Hz-60Hz	230 VAC ±10%, 50Hz-60Hz	230 VAC ±10%, 50Hz-60Hz
RFID card reader		●		●

RECOMMENDED ACCESSORIES

	Cp D110945 - Ci 2607227 MAGNETIC LOOP 5MT High sensivity pre-cabled magnetic loop (10m tail x 5m loop)		Cp D141784 - Ci 2607232 MAGNETIC LOOP 8MT High sensivity pre-cabled magnetic loop (10m tail x 8m loop)
	Cp 130197 - Ci 2605958 TRAFFIC LIGHT LED 200MM Traffic light, 2 LEDs light, diam. 200mm		Cp D113999 - Ci 2605754 LOOP DETECTOR LITE 2 channel loop detector, 24VDC, up to 4 frequencies per channel for close loop installations, adjustable sensitivity, boost function for sensitivity increase
	Cp D113948 - Ci 2605737 LOOP DETECTOR PRO 2 channel loop detector, 24VDC/AC, up to 4 frequencies per channel for close loop installations, adjustable sensitivity, boost function for sensitivity increase. Direction detection.		Cp 394080 - Ci 2607023 PRESENCE AND SAFETY DETECTOR - LASER LOOPS Presence and Safety laser detector. Its used as an alternative of magnetic loops. Includes one input and two relay outputs. Maximum detection range: 9.9m x 9.9m. 10-35VDC power supply.



ESPAS 30 ULTRA

RECOMMENDED ACCESSORIES

	Cp 394073 - Ci 2604478 LASER SAFETY SENSOR Safety laser detector. Its used in combination with magnetic loops in order to add an additional safety device (eg: for pedestrian). Includes two relay outputs. Maximum detection range: 5m x 5m. 10-35VDC power supply.		Cp 394075 - Ci 2607020 LASER DETECTOR REMOTE CONTROL Remote control for settings Safety laser detector and Presence and Safety laser detector.
	Cp P800138 - Ci 2606835 KIT DENEb TO DENEb Additional board used to communicate between two stations in "Two Ways" and "Double Height" configuration. For 30 system only.		Cp P800137 - Ci 2606776 KIT INTERLOCK FOR PARKING Kit for manage interlock function (station between two barriers), useful to prevent queues on the gate or for particularly security requirements. It's usable when a third loop management is required (e.g. motorbike). Includes a loop detector for the second barrier safety loop and a kit of terminals in order to connect the commands of the second barrier.
	Cp P800132 - Ci 2606775 485-TCP/IP CONVERTER KIT The device allows the insertion within a wired TCP/IP network of devices using an RS-485 serial interface. The solution is used in all those realities where it is necessary to transmit serial data through, for example, a local network already present.		



INFORMATION REGARDING THE PROTECTION OF THE INDUSTRIAL AND INTELLECTUAL PROPERTY RIGHTS OF BFT. BFT S.p.A. protects its industrial property by depositing trademarks, patents, models and designs. The intellectual property of BFT S.p.A. is protected by copyright law. BFT S.p.A. also protects its know-how by taking measures to protect the technical and commercial information inherent in its company and products. All the products in this catalogue are ORIGINAL BFT MODELS and only BFT S.p.A. is authorised to produce them and market them anywhere in the world. All the commercial names in this catalogue are owned by BFT S.p.A., and only BFT S.p.A. is authorised to use them in relation to the corresponding merchandise category. FALSIFIERS WILL BE PROCEEDED AGAINST IN ACCORDANCE WITH BOTH CIVIL AND CRIMINAL LAW. THESE CONDITIONS NOT ONLY GUARANTEE THE INTELLECTUAL PROPERTY RIGHTS OF BFT, BUT ALSO PROTECT CUSTOMERS BY GUARANTEEING THAT THE PRODUCTS THEY ARE PURCHASING ARE ORIGINAL BFT PRODUCTS RESULTING FROM STUDIES AND DESIGNS WITHIN THE BFT COMPANY.