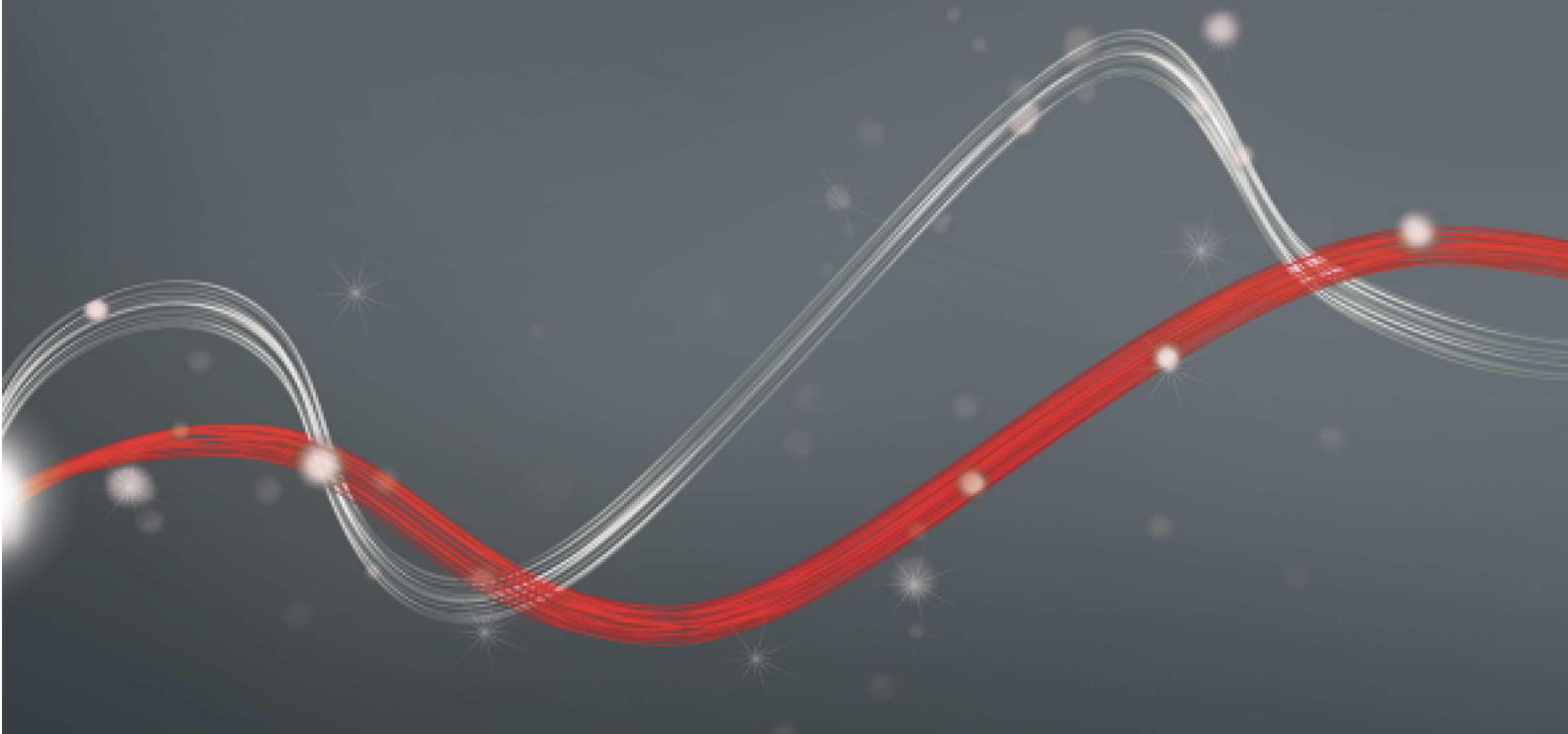




Be ahead

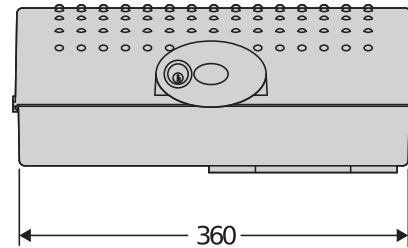
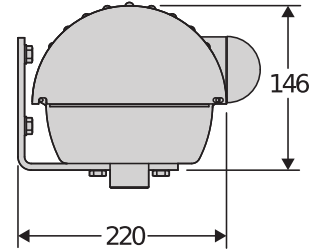


IGEA LB





Automation systems for industrial sectional doors and folding doors



Range of 230V electromechanical operators for industrial folding doors, up to 2 panels per gate.
Available also in 24V version to guarantee maximum anti-crushing safety and precision in movement and slowdown.

Relevant features



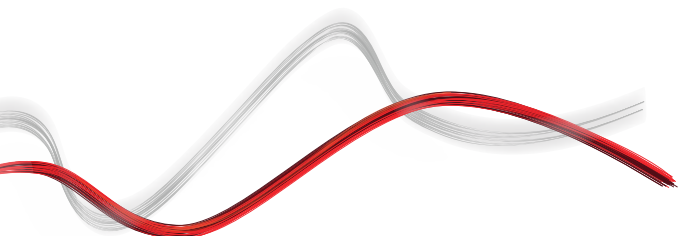
Control unit with programming display, automatic setting menu, simplified programming and virtual encoder in 24V version.



Built-in, adjustable, single-cable electromechanical limit switch system.



Removable steel cable release system.





Automation systems for industrial sectional doors and folding doors

IGEA LB

Code	Ci	Name	Description
P935072 00002	2611746	IGEA LB BT	Electromechanical operator for industrial folding doors (max. two panels) with panel length 2 m. door weight 250 kg and use Semi intensive. D-Track
P935077 00001	2611750	IGEA LB	Electromechanical operator for industrial folding doors (max. two panels) with panel length 2 m. door weight 250 kg and use Semi intensive. Electric clutch

THALIA P: Control panel for one or two 24V electromechanical and hydraulic operators for swing gates with electric lock management, for highly complex systems



Cp D113747 00002 - Ci 2600583 - THALIA P - Recommended



- Card power supply: 230 V single-phase
- Operators power supply: 24Vdc 240W max each operator
- Main features: removable terminal blocks with new standard colour-coding, simplified scenario-based programming with display and incorporated dual channel receiver, D-Track anti-crushing system, slowdown during opening and closing and electronic self-learning
- Main features: automatic closing, rapid closing, partial opening, operation with deadman feature, direct connection powered solenoid lock and electromagnet, direct connection edge BK2.
- Application: display panel for 1 or 2 24V operators
- Compatibility: LIBRA, LIBRA R, LIBRA MA R

RIGEL 6 220-230V 50/60HZ: Universal control panel with display for one or two 230V - 650+650W operators

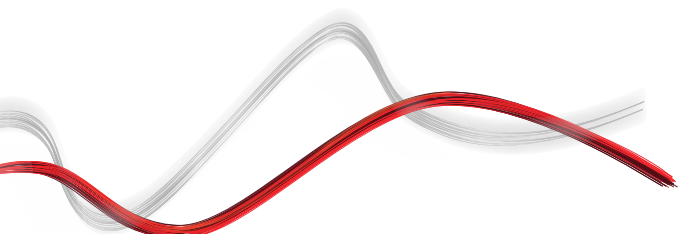


Cp D113833 00002 - Ci 2600589 - RIGEL 6 220-230V 50/60HZ - Recommended



- Universal control panel with display for one or two 230V - 650+650W operators
- Application: universal control panel for one or two operators
- Card power supply: 230 V single-phase
- Operators power supply: 230V single-phase
- Main features: removable terminal blocks, programming and diagnostics with display, built-in four-channel receiver, electro lock, electronic torque limiter, electronic deceleration at opening and closing, a separate limit switch inputs for each motor, traffic light management, preheating hydraulic operators, weekly timer, possibility to delete a specific remote control, customization of the 4 radio channels, personalization of the duration of the delayed output, adjustable sensitivity to the obstacle.
- Main functions: automatic re-closing, separate motor working times, stays locked when closed, water hammer, 2/3/4 step logic, partial opening, fast closing, separate opening and closing
- Compatibility: RIGEL 5 - RIGEL 4 - RIGEL 3 - RIGEL N

	IGEA LB BT	IGEA LB
Control unit	THALIA P	RIGEL 6
Nominal voltage	24 V	230 V
Power consumption	40 W	300 W
Max. door/gate weight	250 kg	250 kg
Panel length	2 m	2 m
Type of limit switch	Electromechanical	Electromechanical
Slowdown	Yes	Yes
Locking	Mechanical	Mechanical
Release	External accessory with personal key	External accessory with personal key
Impact reaction	D-Track	Electronic clutch
Frequency of use	Semi intensive	Semi intensive
Protection rating	IP4X	IP4X
Environmental conditions	-15 ÷ 60 °C	-15 ÷ 60 °C





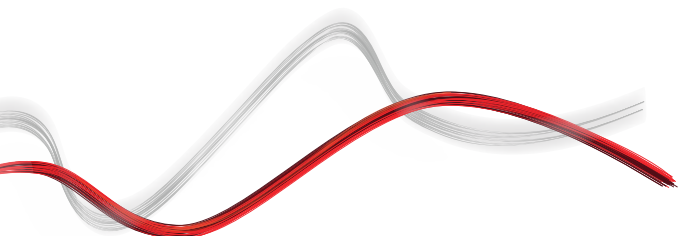
Automation systems for industrial sectional doors and folding doors

VITAL ACCESSORIES

	<p>Cp D113811 00004 - Ci 2607514 ALENA SW2</p> <p>Control panel with slow-down, dip switches and potentiometers for one or two 230V 400W+400W, operators for swing gates and industrial folding doors</p>			
--	---	--	--	--

RECOMMENDED ACCESSORIES

	<p>Cp P111782 - Ci 2601411 COMPACTA A20-180</p> <p>Pair of photocells adjustable 180° horizontally. 20 metre range. 12-33 VAC/15-35 VDC power supply.</p>			<p>Cp D113745 00002 - Ci 2600477 THALIA</p> <p>Control panel with display for one or two 24V electromechanical operators for swing gates</p>
	<p>Cp N733020 - Ci 2601471 SEB</p> <p>External key release for BERMA, FORB, IGEA LB and IGEA LB BT</p>			<p>Cp N574039 - Ci 2610798 BOX</p> <p>Wall cabinet for release with steel cable and electric control; cable not included</p>
	<p>Cp N733421 - Ci 2600967 RCA</p> <p>Lever release with steel cable, length 3,5 m. Compatible with BOX.</p>			<p>Cp N733422 - Ci 2600457 RCAL</p> <p>Lever release with steel cable, length 7 m. Compatible with BOX.</p>





Automation systems for industrial sectional doors and folding doors

EasyAXS

EASY CONNECT. EASY ACCESS.



The new connectivity solution which boosts the potential of BFT products and services to make access automations smarter and easier to use for both installers and end users.





Automation systems for industrial sectional doors and folding doors

EASY TO CONNECT

WIFI MODULE



→ 10/15 metres

WIFI MODULE
+ ANTENNA



→ 20/25 metres

MOBILE MODULE
+ ANTENNA + SIM



→ ∞



**PLUG&PLAY
INSTALLATION**



**ALWAYS
CONNECTED**



**EVEN MORE
CONNECTIVITY**



**EASY TO SET UP
FOR INSTALLERS**



**EASY TO CONTROL
FOR CUSTOMERS**





Automation systems for industrial sectional doors and folding doors



U-LINK 2.0

AN UPDATED VERSION OF
U-LINK TO GIVE YOU EVEN
MORE FUNCTIONALITY



Scalable

You can add as many devices as you want



Intuitive

Easy to install and to use



Functional

Settings can be controlled and firmware updated remotely using dedicated applications



Practical

Works with or without an internet connection



Flexible

It allows you to create groups of interconnected products

U-Link, the exclusive **BFT** technology platform has evolved to offer improved interaction with the latest generation of technological ecosystems. Its ability to interface with all home access automation access devices has been expanded, meaning it is now a very useful tool for installers. It is also a faster communication protocol with increased security for communicating information.

It allows you to save even more time, checking everything very easily and giving you even more peace of mind.



Automation systems for industrial sectional doors and folding doors

-SECURITY

A NEW AND EVEN MORE SECURE RADIO PROTOCOL



→ **Secure**

By transmitting data protected by a cryptographic key

U-Security is the new technology from **BFT** which incorporates encrypted rolling code thanks to the encryption key which masks the remote control code, meaning that it is impossible to clone a BFT remote control using another brand's model.

The functions of the **Er Ready** system are incorporated and a new procedure is also available for programming remote controls by scanning a QR CODE and using a special app. All products featuring this technology are **REPLAY**, so they can transmit the code to another BFT remote control using a combination of keys.



→ **Easy**

Pairing a remote control with a receiver can be done easily by scanning the QR code and using the dedicated app



→ **Universal**

The radio protocol is also compatible with the previous generation of receivers

