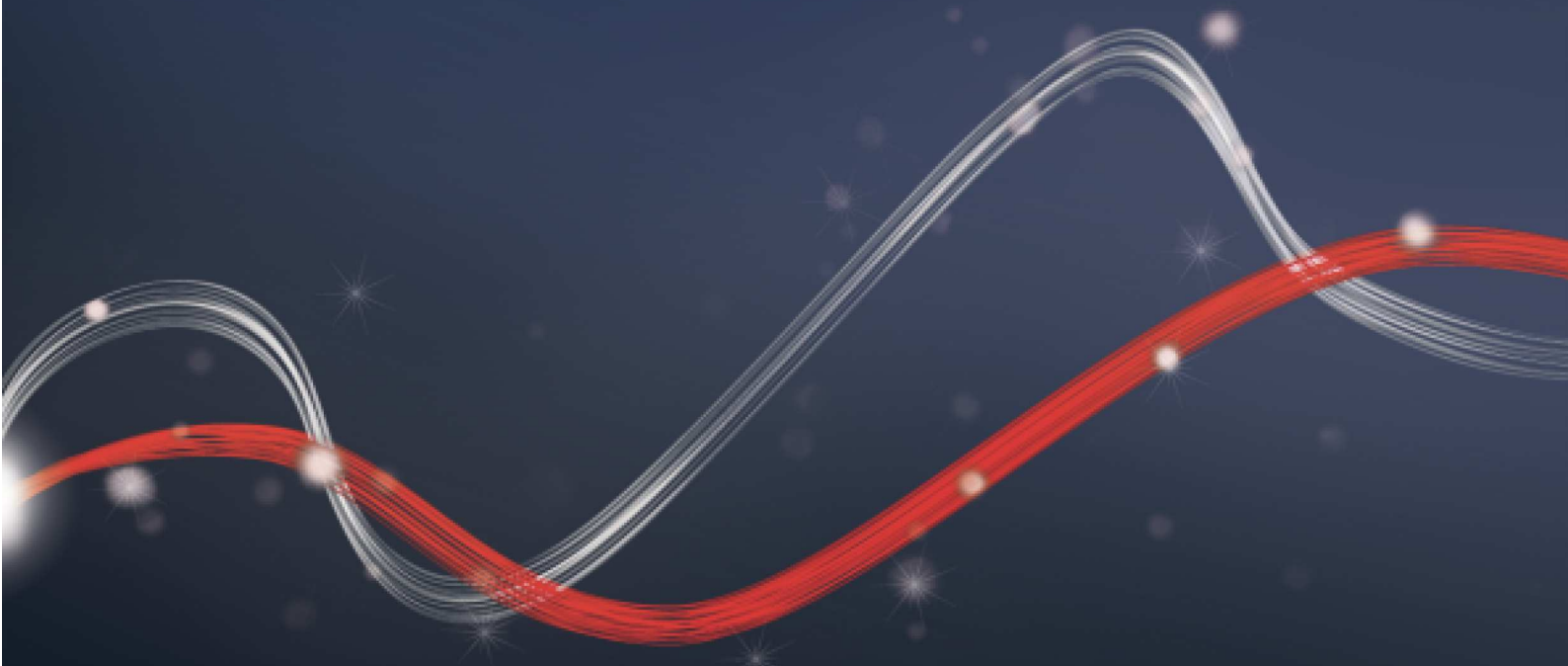




Be ahead

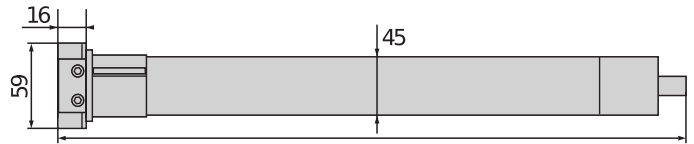


# REEL EASY





## Roller shutters automation systems



REEL EASY **B10** 230 **W45** =516  
REEL EASY **B20** 230 **W45** =546  
REEL EASY **B30** 230 **W45** =591  
REEL EASY **B50** 230 **W45** =591

The Reel range consists of a complete offer of wire tubular motors, with electromechanical limit switches. A complete set of accessories and versions make the Reel range the ideal solution for first-time installations and refurbishments.

### Relevant features



The KIT version comes complete with all accessories for proper installation as well as operators already arranged in the special telescopic roller, able to adapt perfectly the size of the frame with a single action



**New Shedir compact wire centralisation board:** easily installed even in the boxes of roller shutters thanks to its small size, it can control up to two motors or motor units in single or centralised mode.



## Roller shutters automation systems

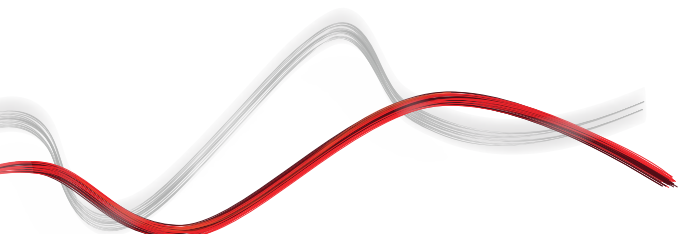
### REEL EASY

Code	Ci	Name	Description
P910052 00001	2611511	REEL EASY B10 230V W45	Wired operator for roller shutters. Max shutter weight 18 kg, max torque 10 Nm and power input 125 W. Shaft rotation speed 16 Rpm
P910052 00002	2611512	REEL EASY B20 230V W45	Wired operator for roller shutters. Max shutter weight 35 kg, max torque 20 Nm and power input 180 W. Shaft rotation speed 16 Rpm
P910052 00003	2611513	REEL EASY B30 230V W45	Wired operator for roller shutters. Max shutter weight 55 kg, max torque 30 Nm and power input 235 W. Shaft rotation speed 16 Rpm
P910052 00004	2611514	REEL EASY B50 230V W45	Wired operator for roller shutters. Max shutter weight 88 kg, max torque 50 Nm and power input 285 W. Shaft rotation speed 12 Rpm

	REEL EASY B10 230V W45	REEL EASY B20 230V W45	REEL EASY B30 230V W45	REEL EASY B50 230V W45
Motor power supply	230 V	230 V	230 V	230 V
Power consumption	125 W	180 W	235 W	285 W
Outer diameter	60 mm	60 mm	60 mm	60 mm
N° limit switch revolutions	28	28	28	28
Type of end switch	Mechanical	Mechanical	Mechanical	Mechanical
Locking	Mechanical	Mechanical	Mechanical	Mechanical
Frequency of use	Residential	Residential	Residential	Residential
Protection rating	IP44	IP44	IP44	IP44
Environmental conditions	-10 ÷ 40 °C	-10 ÷ 40 °C	-10 ÷ 40 °C	-10 ÷ 40 °C

### RECOMMENDED ACCESSORIES

	<b>Cp</b> P111515 - <b>Ci</b> 2611267 <b>SHEDIR B CBC 02 L01</b> Control unit for wired centralisation. For 2 operators (or 2 groups of operators)		<b>Cp</b> P121028 - <b>Ci</b> 2600242 <b>MIME PAD</b> 4-channel wall-mounted radio control with rolling code
	<b>Cp</b> D113831 - <b>Ci</b> 2601024 <b>MIME TX</b> Two-channel miniaturized 433 Mhz transmitter		<b>Cp</b> P111376 - <b>Ci</b> 2601005 <b>SCS 1</b> Expansion card
	<b>Ph Out</b> <b>Cp</b> P111183 - <b>Ci</b> 2611227 <b>CREP</b> Twilight sensor		<b>Ph Out</b> <b>Cp</b> P111182 - <b>Ci</b> 2611226 <b>ANEM</b> Anemometric sensor with encoder for wind
	<b>Cp</b> N999325 - <b>Ci</b> 2611086 <b>SM5014</b> Wall support for operators with square snap pin and split pin for direct coupling, suitable for all operators (from 10Nm to 50Nm).		<b>Cp</b> P130002 - <b>Ci</b> 2611440 <b>CAL 60/100</b> Adjustable telescopic octagonal cover for RUL 60.
	<b>Cp</b> P130012 - <b>Ci</b> 2611446 <b>RUL 60/3</b> Octagonal shutter winding roller Ø60 mm x 3 m.		<b>Ph Out</b> <b>Cp</b> P130001 - <b>Ci</b> 2611439 <b>BLOCCANTI 40</b> Anti-break-in block for shutters with slats of height 40 mm.
	<b>Ph Out</b> <b>Cp</b> P130013 - <b>Ci</b> 2611447 <b>BLOCCANTI 50</b> Anti-break-in block for shutters with slats of height 50 mm.		<b>Cp</b> D113824 - <b>Ci</b> 2600588 <b>MIME AC</b> 433 MHz 2-channel indoor receiver 2 independent outputs 230 Vac power supply 30-position memory Operating mode: monostable, bistable, timed, motor control





Roller shutters automation systems

# EasyAXS

EASY CONNECT. EASY ACCESS.



The new connectivity solution which boosts the potential of BFT products and services to make access automations smarter and easier to use for both installers and end users.

1



## EASY TO CONNECT



**PLUG&PLAY**  
CONNECTIVITY MODULE  
FOR QUICKLY CONNECTING  
BFT SOLUTIONS



2

## EASY TO SET UP



CONFIGURATION  
AND  
MANAGEMENT OF  
THE MOTOR WITH  
THE **EasyAXS app**

3

## EASY TO CONTROL



**TaHoma app**  
TO PROVIDE CUSTOMERS  
WITH A SMART SOLUTION  
FOR ACCESSING THEIR  
HOMES





Roller shutters automation systems

**EASY TO CONNECT**

**WIFI MODULE**



→ 10/15 metres

**WIFI MODULE + ANTENNA**



→ 20/25 metres

**MOBILE MODULE + ANTENNA + SIM**



→ ∞



**PLUG&PLAY  
INSTALLATION**



**ALWAYS  
CONNECTED**



**EVEN MORE  
CONNECTIVITY**



**EASY TO SET UP  
FOR INSTALLERS**



**EASY TO CONTROL  
FOR CUSTOMERS**





Roller shutters automation systems



# U-LINK 2.0

## AN UPDATED VERSION OF **U-LINK** TO GIVE YOU EVEN MORE FUNCTIONALITY



### **Scalable**

You can add as many devices as you want



### **Intuitive**

Easy to install and to use



### **Functional**

Settings can be controlled and firmware updated remotely using dedicated applications



### **Practical**

Works with or without an internet connection



### **Flexible**

It allows you to create groups of interconnected products

**U-Link**, the exclusive **BFT** technology platform has evolved to offer improved interaction with the latest generation of technological ecosystems. Its ability to interface with all home access automation access devices has been expanded, meaning it is now a very useful tool for installers. It is also a faster communication protocol with increased security for communicating information.

It allows you to save even more time, checking everything very easily and giving you even more peace of mind.



## Roller shutters automation systems

# U-SECURITY

## A NEW AND EVEN MORE SECURE RADIO PROTOCOL



### Secure

By transmitting data protected by a cryptographic key

**U-Security** is the new technology from **BFT** which incorporates encrypted rolling code thanks to the encryption key which masks the remote control code, meaning that it is impossible to clone a BFT remote control using another brand's model.

The functions of the **Er Ready** system are incorporated and a new procedure is also available for programming remote controls by scanning a QR CODE and using a special app. All products featuring this technology are **REPLAY**, so they can transmit the code to another BFT remote control using a combination of keys.



### Easy

Pairing a remote control with a receiver can be done easily by scanning the QR code and using the dedicated app



### Universal

The radio protocol is also compatible with the previous generation of receivers



INFORMATION REGARDING THE PROTECTION OF THE INDUSTRIAL AND INTELLECTUAL PROPERTY RIGHTS OF BFT. BFT S.p.A. protects its industrial property by depositing trademarks, patents, models and designs. The intellectual property of BFT S.p.A. is protected by copyright law. BFT S.p.A. also protects its know-how by taking measures to protect the technical and commercial information inherent in its company and products. All the products in this catalogue are ORIGINAL BFT MODELS and only BFT S.p.A. is authorised to produce them and market them anywhere in the world. All the commercial names in this catalogue are owned by BFT S.p.A., and only BFT S.p.A. is authorised to use them in relation to the corresponding merchandise category. **FALSIFIERS WILL BE PROCEEDED AGAINST IN ACCORDANCE WITH BOTH CIVIL AND CRIMINAL LAW. THESE CONDITIONS NOT ONLY GUARANTEE THE INTELLECTUAL PROPERTY RIGHTS OF BFT, BUT ALSO PROTECT CUSTOMERS BY GUARANTEEING THAT THE PRODUCTS THEY ARE PURCHASING ARE ORIGINAL BFT PRODUCTS RESULTING FROM STUDIES AND DESIGNS WITHIN THE BFT COMPANY.**