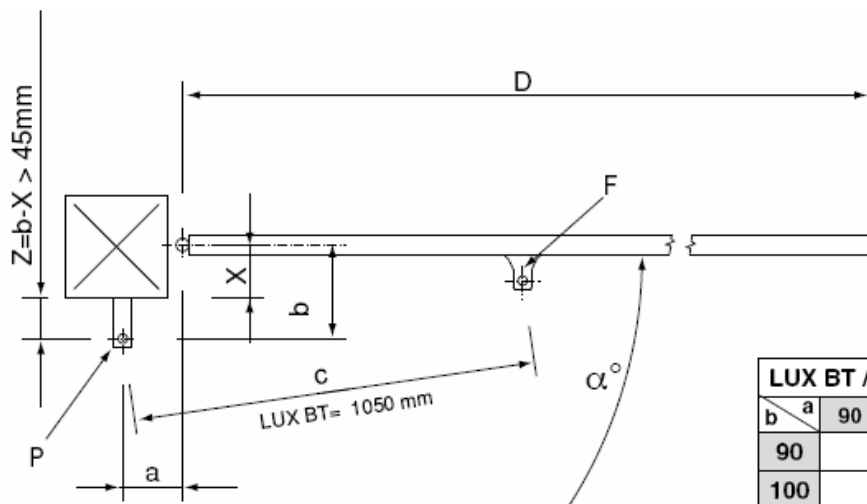
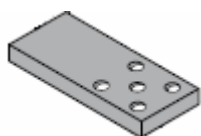
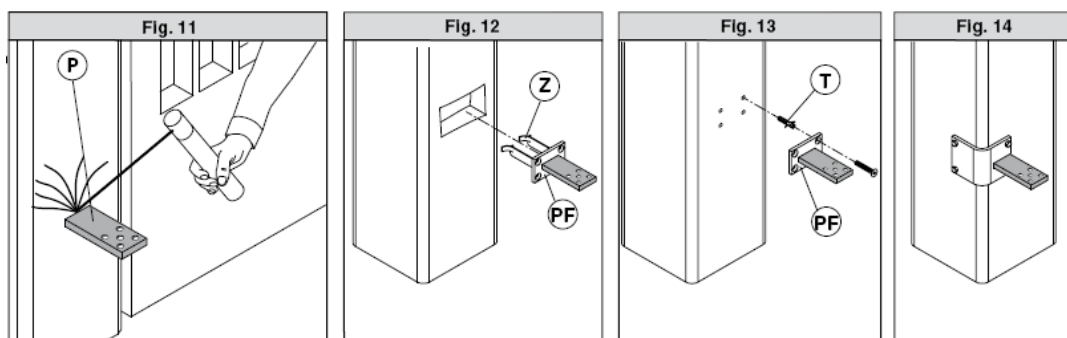


### SETTING THE INSTALLATION QUOTES

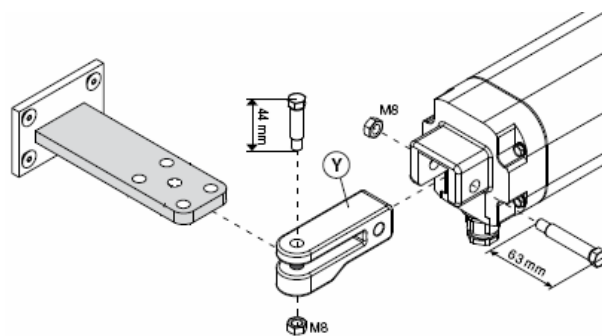


LUX BT / LUX 2 BT		mm							
b \ a	90	100	110	125	135	145	155	165	175
90					113	105	100	95	92
100					107	101	96	92	89
110				106	102	96	92	89	
125				100	95	90	87		
135			98	95	90				
145		94	96	90					
155		94	92						
165	90	93	87						
175	92	87							$\alpha^\circ$

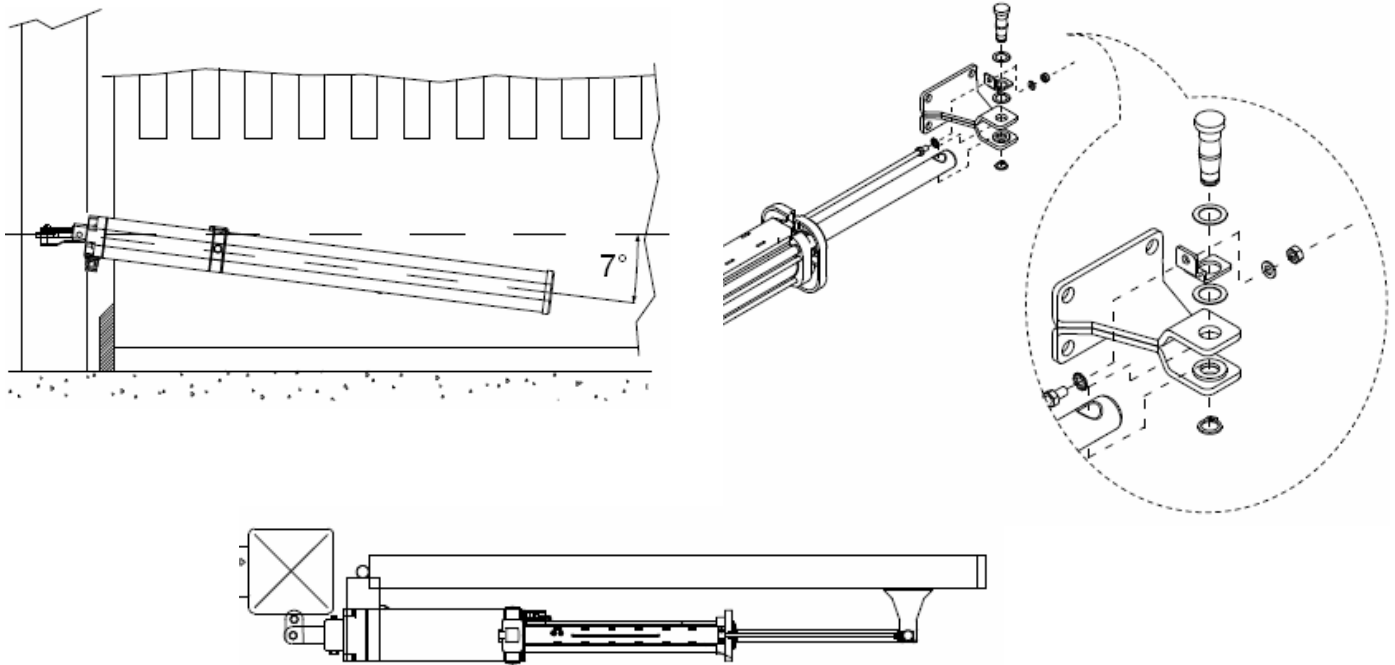
### FIXING THE OPERATOR TO THE POST



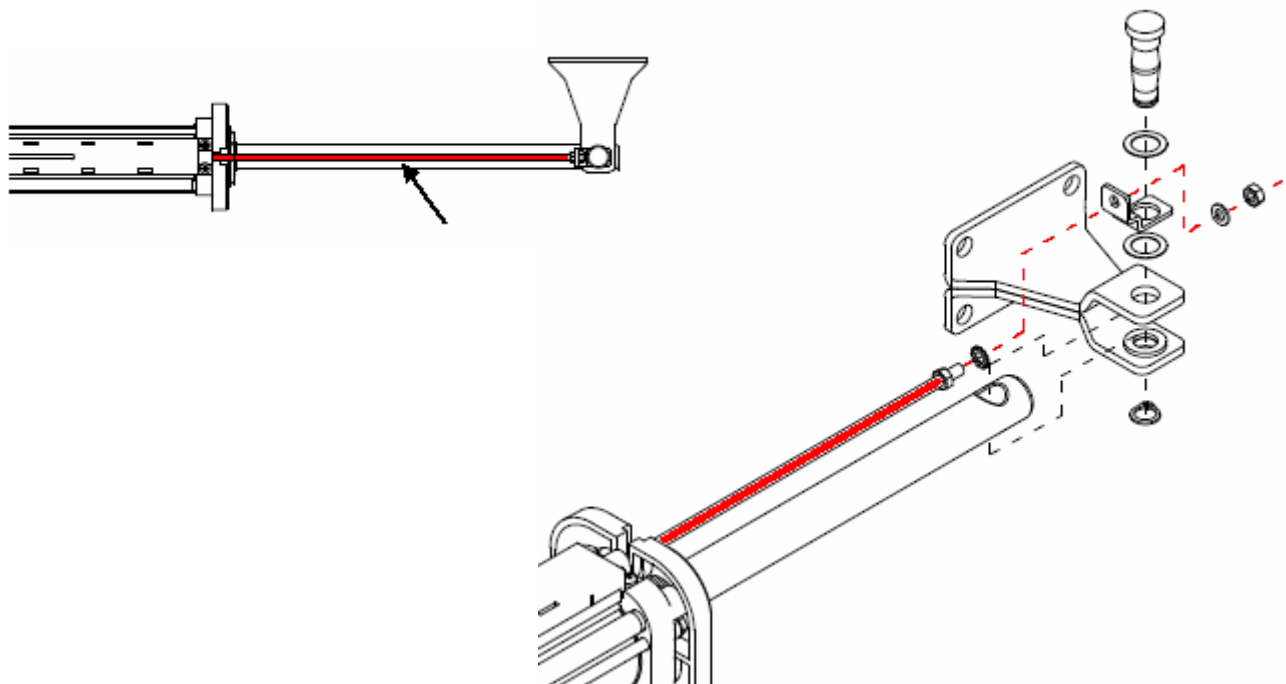
Adjustable rear bracket for LUX BT



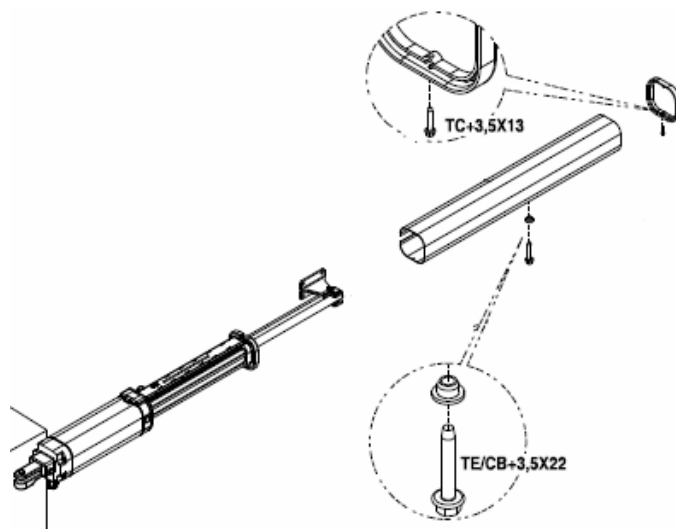
### FIXING THE OPERATOR TO THE GATE



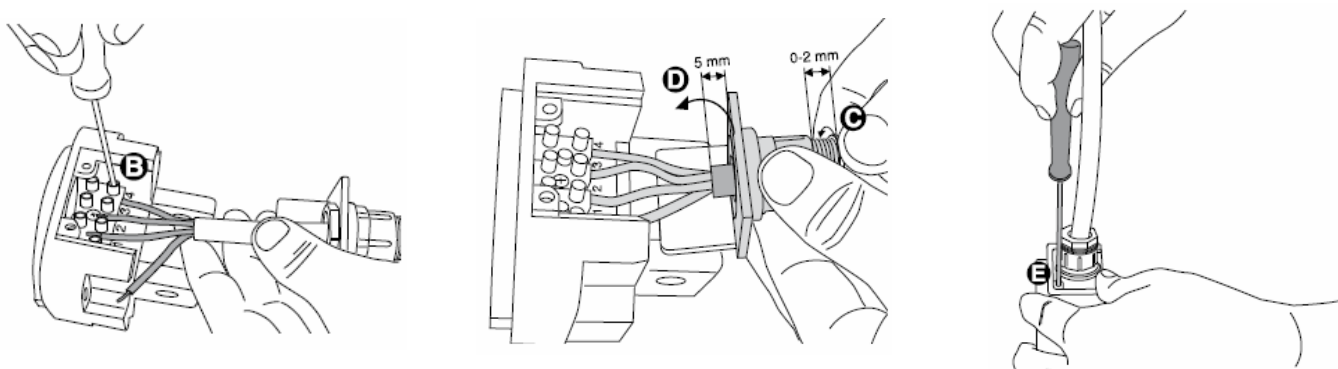
### SETTING THE ENCODER ARM



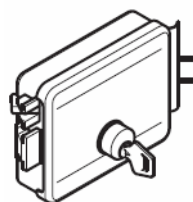
### INSTALLING THE PISTON COVER



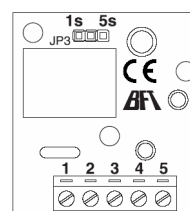
### CABLING THE OPERATOR AND THE CONTROL BOARD



### INSTALLING THE ELECTRIC LOCK (LUX BT)

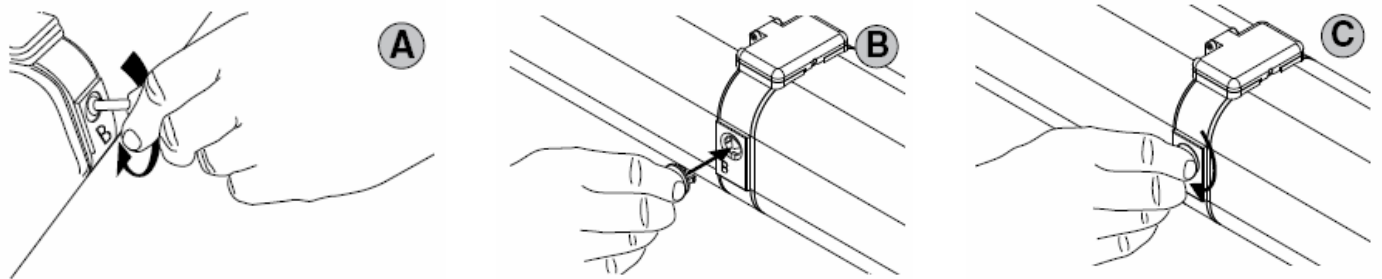


D121017 - ECB SX  
D121016 - ECB DX  
D121018 - ECB VERTICAL  
Horizontal (Left and Right), Vertical.

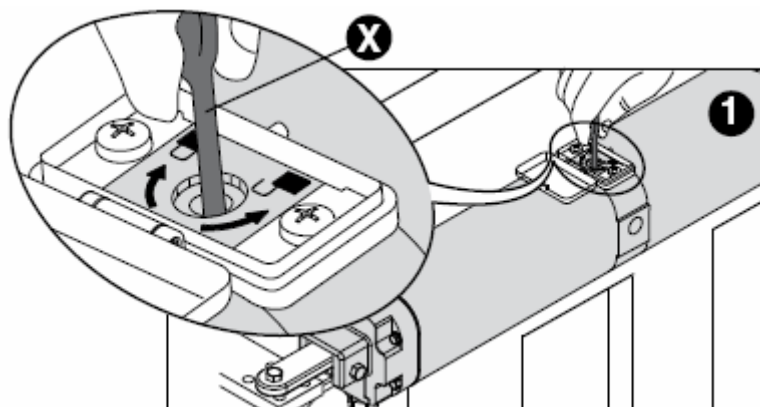


D111761 - ME BT  
Control board for electric lock

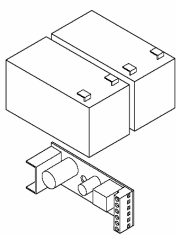
### SETTING THE HYDRAULIC BLOCKS (LUX BT 2B)



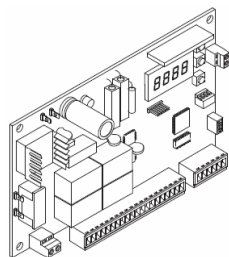
### MANUAL RELEASE WITH KEY (LUX BT e LUX BT 2B)



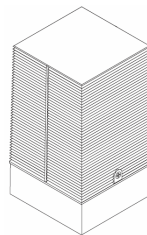
### OTHER ACCESSORIES



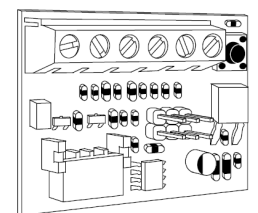
P125005 - BT BAT  
Battery back up kit



D113715 00002 - LIBRA C LX  
Control board



D113686 00001 - LAMPO AI 24V  
24V flashing light with built in  
antenna



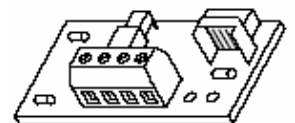
P111408 - SCS WIE  
Control board to connect  
Wiegand accessories



N999417 - CABLE LUX BT  
100 m Power cable for  
LUX BT



D113719 00003 - RAY X 24V  
24 V flashing light with  
built in antenna



P111376 - SCS 1  
Control board for  
serial connection