

LUX



RANGE

Hydraulic operator for swing gates for very intensive use

REFERENCE	DESCRIPTION	VOLTAGE	LEAF WEIGHT	LEAF LENGTH
P935011 00013	LUX 2B UL/CSA	120 V	up to 660 lbs (~300 kg)	up to 10' (3 m)
P935039 00002	LUX FC 2B UL/CSA	120 V	up to 660 lbs (~300 kg)	up to 10' (3 m)
P935046 00004	LUX R 2B 2SN UL/CSA	120 V	up to 660 lbs (~300 kg)	up to 10' (3 m)
P935014 00010	LUX GV2B UL/CSA	120 V	up to 700 lbs (~320 kg)	up to 15' (4,5 m)

TECHNICAL FEATURES

LUX 2B UL/CSA

Control Panel	RIGEL 4 UL/CSA (suggested) or RIGEL5 no cap
Reversible/Irreversible Operator	irreversible
Power Supply	120 V, 60 Hz single-phase
Absorbed Power	0.33 hp (250 W)
Thermal Protection	integrated
Rod Working Stroke	10.63" (270 mm)
Rod Speed	0.55 ips (14 mm/s)
Opening And Closing Time	17 s
Slowdown	none
Impact Reaction	hydraulic clutch
Lock	hydraulic opening/closing
Manual Release	release key
Operating Cycle	intensive use
Environmental Conditions	from 14°F (-10°C) to 140°F (+60°C)
Degree Of Protection	IP57
Operator Weight	19 lbs (~8,7 kg)
Dimensions	see drawing next page

LUX FC 2B UL/ CSA

Control Panel	RIGEL 4 UL/CSA (suggested) or RIGEL5 no cap
Reversible/Irreversible Operator	irreversible
Power Supply	120 V, 60 Hz single-phase
Absorbed Power	0.33 hp (250 W)
Thermal Protection	integrated
Rod Working Stroke	11.02" (280 mm)
Rod Speed	0.55 ips (14 mm/s)
Opening And Closing Time	17 s
Slowdown	none
Impact Reaction	hydraulic clutch
Lock	hydraulic opening/closing
Manual Release	release key
Operating Cycle	intensive use
Environmental Conditions	from 14°F (-10°C) to 140°F (+60°C)
Degree Of Protection	IP57
Operator Weight	19 lbs (~8,7 kg)
Dimensions	see drawing next page

LUX R 2B 2SN UL/CSA

Control Panel	RIGEL 4 UL/CSA (suggested) or RIGEL5 with cap
Reversible/Irreversible Operator	irreversible
Power Supply	120 V, 60 Hz single-phase
Absorbed Power	0.33 hp (250 W)
Thermal Protection	integrated
Rod Working Stroke	9.84" (250 mm)
Rod Speed	0.55 ips (14 mm/s)
Opening And Closing Time	17 s
Slowdown	on rod extension
Impact Reaction	hydraulic clutch
Lock	hydraulic opening/closing
Manual Release	release key
Operating Cycle	intensive use
Environmental Conditions	from 14°F (-10°C) to 140°F (+60°C)
Degree Of Protection	IP57
Operator Weight	19 lbs (~8,7 kg)
Dimensions	see drawing next page

LUX GV 2B UL/CSA

Control Panel	RIGEL 4 UL/CSA (suggested) or RIGEL5 with cap
Reversible/Irreversible Operator	irreversible
Power Supply	120 V, 60 Hz single-phase
Absorbed Power	0.33 hp (250 W)
Thermal Protection	integrated
Rod Working Stroke	15.35" (390 mm)
Rod Speed	0.55 ips (14 mm/s)
Opening And Closing Time	17 s
Slowdown	none
Impact Reaction	hydraulic clutch
Lock	hydraulic opening/closing
Manual Release	release key
Operating Cycle	intensive use
Environmental Conditions	from 14°F (-10°C) to 140°F (+60°C)
Degree Of Protection	IP57
Operator Weight	19 lbs (~8,7 kg)
Dimensions	see drawing next page

- T: US. 1877 995 8155
- info.bft@bft-usa.com
- www.bft-usa.com



tuned to you

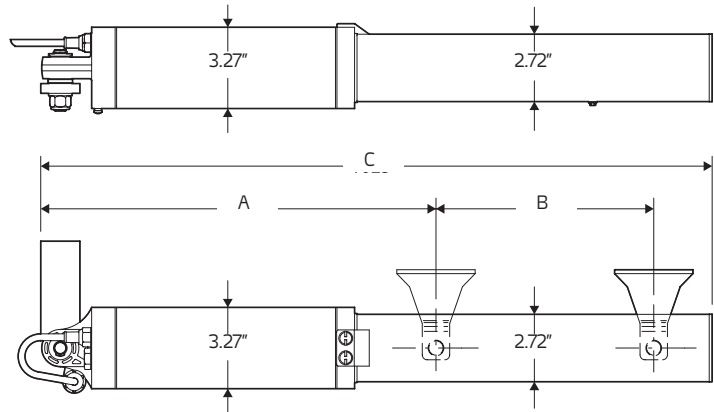
BFT Americas, Inc.

6100 Broken Sound Parkway N.W.,
Suite 14
Boca Raton, FL, 33487

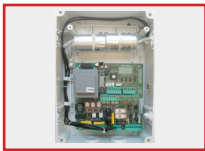
DIMENSIONS

	A	B	C
LUX 2B UL/CSA	28.15"	10.53"	40.35"
LUX FC 2B UL/CSA	33.46"	* 11.02"	51.97"
LUX R 2B 2SN UL/CSA	27.95"	** 9.84"	41.34"
LUX GV 2B UL/CSA	33.46"	15.35"	51.18"

* (+ spring compression) ** (+ slowdown)



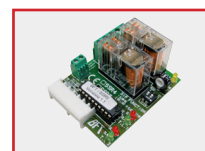
ACCESSORIES



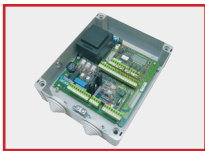
**KD113693 00001
- RIGEL 5 WITH
CAPACITORS**
Fuse value: transformer 2A
T, logic 1A T.



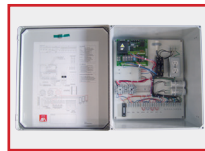
**D112326 00003 -
RIGEL 4 UL/CSA WITH
CAPACITORS**
Fuse value: transformer
2A T, logic 1A T.



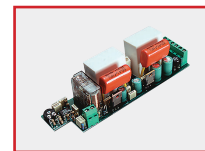
D111704 - SSR5
Traffic light and preheating
board for RIGEL 5 control
panel.



**D113693 00001
RIGEL 5 120 V NO
CAPACITORS**



**KERIG4C001U
RIGEL 4**
12" x14" large fiberglass
enclosure. Pre-wired with
Rigel4



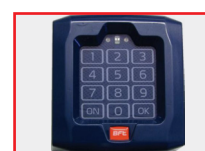
D113050/110 - SPL 120V
Pre-heating board for 1 or 2
LUX, SUB, P4,5-P7 and E5
operators. Can be fitted inside
control panels RIGEL 4 UL/
CSA, ALCOR UL/CSA.
\$ 92.89



**KERIG5C020U
RIGEL 5 LE**
12" x14" large fiberglass
enclosure. Pre-wired with
Rigel5



**BFT-1200MLKIT -
1200 LB MAGLOCK
KIT**
Magnetic lock Kit including
bracket, relay and power
supply.



P121024 - Q-BOX
Digital keypad with
10 channels and 100
combinations. Backlit



D610180 - CLS/52
Release key for LUX,
PHOBOS BT, PHOBOS
BT L and DEIMOS BT.



**I101615
IDROLUX WINTER**
Hydraulic oil for low
temperatures, 2 lt bottle.
Always use the same
grade oil when refilling.



**D111904 Mitto 2
Transmitter:**
12V Two channel 433Mhz
rolling code remote control

→ T: US. 1877 995 8155
→ info.bft@bft-usa.com
→ www.bft-usa.com



tuned to you

BFT Americas, Inc.
6100 Broken Sound Parkway N.W.,
Suite 14
Boca Raton, FL, 33487