

# IGEA BT

## RANGE

Electromechanical operator for column mounted swing gates up to 10 feet and 550 lbs

## IGEA BT

P935070 00002 - IGEA BT

R935229 00003 - KIT WITH 1 OPERATOR

R935229 00004 - KIT WITH 2 OPERATORS PHOTO EYE AND 2 REMOTES

KLEBR93522904P KIT WITH 1 OPERATORS & LARGE ENCLOSURE AND BATTERY BACKUP

KLEBR935229 04 - KIT WITH 2 OPERATORS & LARGE ENCLOSURE AND BATTERY BACKUP



## SMART TECHNOLOGY

Control unit compatible with the EELink protocol.

## SAFE USE

- This version powered at 24V is specially designed for simpler and faster installation in compliance with latest safety standards.
- Thanks to the antisquashing system, the operator reverses motion and prevents damage to people and vehicles in the event of contact.



12 x 14 LEB enclosure with battery backup

## TECHNICAL FEATURES

Control panel	LIBRA UL R
Reversible/irreversible operator	irreversible
Power supply	120 V, 60 Hz single-phase
Absorbed power	0.05 hp (40 W)
Thermal protection	integrated in the control panel
Opening or closing time	15 s
Impact reaction	torque limiter integrated in the control panel
Type of lock	mechanical opening/closing
Manual release	release knob with personalised key
Operating cycle	intensive use
Environmental conditions	from 5°F (-15°C) to 140°F (+60°C)
Degree of protection	IP44
Operator weight	35 lbs (~16 kg)
Dimensions	see drawing next page



- T: US. 1877 995 8155
- [info.bft@bft-usa.com](mailto:info.bft@bft-usa.com)
- [www.bft-usa.com](http://www.bft-usa.com)



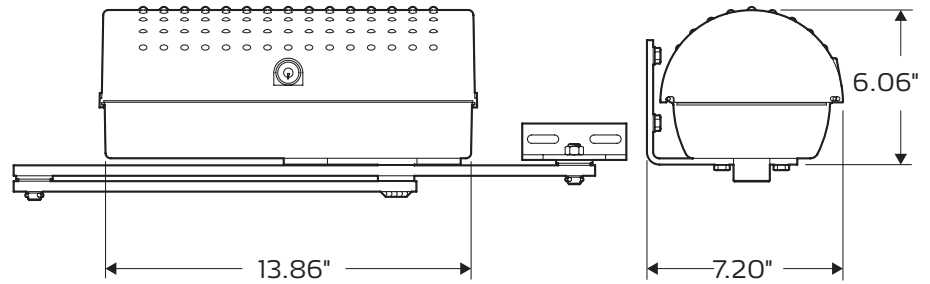
tuned to you

**BFT Americas, Inc.**

6100 Broken Sound Parkway N.W.,  
Suite 14  
Boca Raton, FL, 33487

# IGEA BT

## DIMENSIONS



## ACCESSORIES



### D113701 00001 - LIBRA UL R

- Universal control panel for one or two 24V motors with 1 wire limit switch for each motor.
- Quick wiring through plug-in terminal strips.
- LCD display for quick programming and easy fault diagnosis.
- Crushing prevention by electronic torque self-adjustment.
- Built-in 63 remotes rolling code receiver.
- Optional serial control management, solenoid electric lock and battery backup.



### P125005 - BT BAT

24 Vdc battery backup system for PHOBOS BT, PHOBOS BT L, IGEA BT it includes a charger board that activates the batteries when power is off and charges the batteries when power is on.



### KELIBRC012U - LIBRA 12 X 14 PRE-WIRED ENCLOSURE

12 x 14 enclosure box with Libra UL/CSA and 2 -9Amp/h batteries for back-up poweroutlet On/Off switch



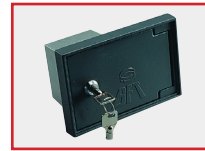
### D111761 - ME BT

12/24 Vac electric lock interface for ECB locks with BT operators.



### D121017 - ECB SX

Left-hand horizontal electric lock. Also available in right-hand and vertical versions.



### N574005 - SIBOX

Empty safe for external release and control push-button panel. Dimensions: 7'x5'x3' 1/2.



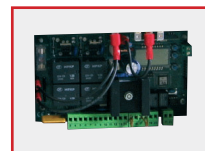
### N733036 - MOX

External release mechanism for Sibox



### D531548 - KI

Blank spare key for release Knob



### D111665 00003 - LIBRA UL R BOARD ONLY

Replacement board.



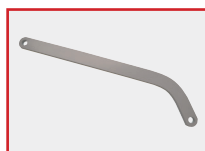
### KED113731 - ECOSOL KIT

Interface, solar panel and 15' of panel cable interface harness, for running BFT control panels off 24V solar power. Includes two 12V 7.2Ah batteries and circuit board for management of commands to control panel and battery charge management, with built-in Rolling Code 433.92 MHz receiver with 63 stored positions.



### D731121 Joint/Igea Primary arm

Grey powder coated arm connecting to operator.



### D731120 Joint/Igea Secondary arm

Grey powder coated arm connecting to the gate bracket.



### P121024 - Q-BOX

Digital keypad with 10 channels and 100 combinations. Backlit

- T: US. 1877 995 8155
- info.bft@bft-usa.com
- www.bft-usa.com



tuned to you

**BFT Americas, Inc.**  
6100 Broken Sound Parkway N.W.,  
Suite 14  
Boca Raton, FL, 33487